

Volume 37 • No 1 • 2013

WHO RABIES BULLETIN EUROPE



World Health
Organization

ISSN 0257-8506

WHO Collaborating Centre for Rabies Surveillance and Research

FRIEDRICH-LOEFFLER-INSTITUT

FLI

Bundesforschungsinstitut für Tiergesundheit

RABIES BULLETIN EUROPE

Volume 37 No 1 Quarter 1 2013

Published in September 2013

CONTENTS

1	Editorial.....	3
2	Summary of Rabies Cases in Europe.....	4
3	Miscellaneous Articles	5
3.1	Rabies in northern Greece	5
3.2	Bernadette Abela-Ridder now responsible for rabies at WHO	7
3.3	WHO Expert Consultation on Rabies – Second report available	8
3.4	Rabies cases detected in Slovak Republic.....	9
4	Distribution of Rabies in Europe	11
4.1	Country summaries of rabies cases, 1 st quarter 2013 01.01.13 - 31.03.13	11
4.2	Rabies cases per country and administrative units, 1 st quarter 2013 01.01.13 - 31.03.13.....	12
5	Trend tables	18
5.1	Comparison of the reporting quarter (I/2013) with the previous quarter (IV/2012)	18
5.2	Comparison of the reporting quarter (I/2013) with the same quarter of the previous year (I/2012)	19
	List of Contributors	20
	Map of rabies cases in Europe, 1 st quarter 2013	20

Principal Editor: Dr. Conrad Freuling

Associated Editor: Dr. Thomas Müller

Technical Support: Patrick Wysocki
Dr. Jens Schell
Elke Reinking
Helga Keßler

Contact: WHO Collaborating Centre for Rabies Surveillance and Research
Institute of Molecular Biology, Friedrich-Loeffler-Institute
- Federal Research Institute for Animal Health –
Südufer 10, 17493 Greifswald - Insel Riems, Germany
tel: ..49 38351 71660/659
fax: ..49 38351 71174
email: who-rabies@fli.bund.de

Print: Druckhaus Panzig
Studentenberg 1a
D-17489 Greifswald
www.druckhaus-panzig.de

ISSN 0257-8506

The Rabies Bulletin Europe is also available online: www.who-rabies-bulletin.org.

Acknowledgements

The Rabies Bulletin Europe is supported by the:

World Health Organization, Geneva
World Organisation for Animal Health (OIE), Paris

Gratefully acknowledged is the financial support of the WHO Collaborating Centre by the

Bundesministerium für Gesundheit and by the Bundesministerium für Ernährung, Landwirtschaft und Verbraucherschutz, Germany

1 Editorial

The first miscellaneous article covers the recent development of the rabies situation in Greece. It is an excerpt of an article previously published in Eurosurveillance. The authors state that besides a number of reported rabies cases in foxes and dogs, a total of 104 human exposures occurred which prompted post exposure prophylaxis.

Already in December 2011, the Greek authorities were informed that rabies was detected in foxes in FYROM, very close to the borders with Greece. The spread of the disease within Greece is not unexpected, given that oral rabies vaccination programmes have not yet started, thus causing an ever increasing area to be covered and subsequently more costs. An immediately accessible emergency fund by the EU would have saved time and money. It is only to be hoped that oral rabies vaccination in Greece and in the other neighbouring countries will soon eliminate rabies on the Balkan Peninsula.

Recently, following the retirement of Dr. Francois-Xavier Meslin, Dr Bernadette Abela-Ridder has taken on the role of team leader for neglected zoonotic diseases in the Department for the Control of Neglected Tropical Diseases of the World Health Organization. She is introduced in the second article. The third article announces the publication of the WHO Expert Consultation on Rabies. This new version replaces the previous WHO Technical Report Series, No. 931. Also, after a long period of rabies-free rabies cases were reported from the Slovak Republic. Prof. Bires has kindly provided an update on the situation.

Also, the rabies data for the 1st quarter of 2013 is presented in tables and a map. The total number reported in Europe reached 1677 cases, including three human cases in Russia and Georgia, and a bat rabies case in Germany. Notably, we present rabies surveillance data for Georgia for the first time. It is envisaged that the other trans-Caucasian countries will soon follow.

Conrad Freuling
Thomas Müller

2 Summary of Rabies Cases in Europe

RABIES CASES

1st QUARTER 2013

01.01.13 - 31.03.13

Name	Code	Total	Wildlife	Domestic animals	Bats	Human
ALBANIA	ALB	0	0	0	0	0
AUSTRIA	AUT	0	0	0	0	0
BELARUS	BLR	125	84	41	0	0
BELGIUM	BEL	0	0	0	0	0
BOSNIA - HERCEGOVINA	BIH	0	0	0	0	0
BULGARIA *	BGR	0	0	0	0	0
CROATIA	HRV	9	8	1	0	0
CYPRUS	CYP	0	0	0	0	0
CZECH REPUBLIC	CZH	0	0	0	0	0
DENMARK	DNK	0	0	0	0	0
ESTONIA	EST	0	0	0	0	0
FINLAND	FIN	0	0	0	0	0
FRANCE	FRA	0	0	0	0	0
GERMANY	DEU	1	0	0	1	0
GEORGIA	GEO	20	1	18	0	1
GREECE	GRC	10	9	1	0	0
HUNGARY	HUN	0	0	0	0	0
ICELAND	ISL	0	0	0	0	0
IRELAND	IRE	0	0	0	0	0
ITALY	ITA	0	0	0	0	0
LATVIA	LVA	0	0	0	0	0
LITHUANIA	LTU	1	0	1	0	0
LUXEMBOURG	LUX	0	0	0	0	0
MACEDONIA	MKD	0	0	0	0	0
MALTA	MLT	0	0	0	0	0
MOLDOVA	MDA	33	6	27	0	0
MONTENEGRO	MNE	0	0	0	0	0
NETHERLANDS	NED	0	0	0	0	0
NORWAY	NOR	0	0	0	0	0
POLAND	POL	80	74	6	0	0
PORTUGAL	PRT	0	0	0	0	0
ROMANIA	ROU	183	153	30	0	0
RUSSIAN FEDERATION	RUS	648	315	331	0	2
SERBIA	SRB	3	3	0	0	0
SLOVAK REPUBLIC	SVK	3	3	0	0	0
SLOVENIA	SVN	1	1	0	0	0
SPAIN	ESP	3	0	3	0	0
SWEDEN	SWE	0	0	0	0	0
SWITZERLAND + LIEC.	CHE	0	0	0	0	0
TURKEY	TUR	74	5	69	0	0
UKRAINE	UKR	483	233	250	0	0
UNITED KINGDOM	UNK	0	0	0	0	0
TOTAL		1677	895	778	1	3

Wildlife: excluding bats

no data

3 Miscellaneous Articles

3.1 Rabies in northern Greece

Excerpt from Tsiodras S, Dougas G, Baka A, Billinis C, Doudounakis S, Balaska A, Georgakopoulou T, Rigakos G, Kontos V, Tasioudi KE, Tzani M, Tsarouxa P, Iliadou P, Mangana-Vougiouka O, Iliopoulos D, Sapounas S, Efstathiou P, Tsakris A, Hadjichristodoulou C, Kremastinou J. Re-emergence of animal rabies in northern Greece and subsequent human exposure, October 2012 – March 2013. *Euro Surveill.* 2013; 18(18):pii=20474. Available online:

<http://www.eurosurveillance.org/ViewArticle.aspx?ArticleId=20474>

Introduction

The last animal rabies case in Greece, dates back to 1987 while the last human case was reported in 1970 [1]. Here we describe the re-emergence of rabies in both wild and domestic animals during October 2012 to end March 2013 in northern and central Greece that was associated with human exposure. We discuss significant public health implications of the situation.

Rabid fox

On 15 October 2012, a red fox (*Vulpes vulpes*) exhibited aggressive behavior during daytime, threatening inhabitants of a west Macedonian village in the area of Kozani. The animal was destroyed and transported to the National Reference Laboratory (NRL) for Animal Rabies at the Centre of Athens Veterinary Institutions Virus Department, of the Ministry of Rural Development and Food as part of a wild animal surveillance program for rabies organised and implemented by the Ministry of Rural Development since April 2012 because of documented presence of lyssavirus in neighboring Balkan countries. Four days later on 19 October, the brain samples tested positive for lyssavirus by fluorescence antibody test (FAT) and molecular techniques i.e. real-time RT-PCR and RT-PCR followed by sequencing.

Rabid shepherd dog and exposure of humans and domestic animals

On 10 November 2012, in west Macedonia, near the Greek-Albanian border in the area of Ieropigi, Kastoria, a shepherd dog, belonging to a herdsman, bit the thigh of a passing-by hunter unprovoked. Two days later, on 12 November, the dog developed an aggressive behaviour attacking other dogs and sheep of the herd. It was consequently destroyed and brain tissue samples investigated at the NRL in Athens were positive for lyssavirus both by FAT and molecular techniques on 16 November.

Tracing of exposed humans and animals and first control measures

An epidemiological investigation was initiated on 16 November by the Emergency Response Center of the Hellenic Centre for Diseases Control and Prevention (KEELPNO), Athens, in order to identify all individuals who had had contact with the dog and possible exposure to the lyssavirus. Seven people possibly exposed were interviewed. Besides the hunter and the shepherd, three relatives of the latter reported close exposure according to the World Health Organization exposure category III, i.e. dog bite and/or mucous membrane exposure to the

rabid dog. All five including the veterinarian that had sampled the animal received human rabies immunoglobulin along with rabies immunization series. None of the exposed individuals has developed any symptoms of human rabies so far. Two further possible contacts did not fulfill the WHO criteria for post-exposure prophylaxis. Testing

of brain samples from one exposed dog gave negative results. Hunting was prohibited in the affected area within a radius of 5km for 15 days and all shepherd dogs (approximately 800) were vaccinated against rabies during the next 15 days.



Fig. 1 Rabies cases in Greece (from 2012 – 1st quarter 2013, derived from the WHO Rabies Bulletin Europe website). Cases in red fox (circle), dog (square) and cat (triangle) are indicated

Results from regular rabies surveillance November to March 2013

In addition to the two animal cases described, and through the enhanced surveillance instituted by the veterinarian authorities, since November 2012 until end March 2013 we have identified additional 13 red foxes, one shepherd dog (20 December 2012) and one domestic cat (28 February 2013) with laboratory confirmed rabies (Figure). No dead wild or domestic animals were found except for the

aforementioned domestic cat that was free to circulate outside the owner's house and was found dead. One other domestic animal (shepherd dog) suspected of infection due to aggressive behavior was destroyed and found positive for rabies. In total 104 human exposures (category I: 1; 1%; category II: 21; 20%; category III: 75; 72% and 7; 7% unknown) have been reported to KEELPNO resulting in the administration of post-exposure prophylaxis according to the WHO criteria [2].

All but 14 (six for each domestic rabid dog and two for the rabid cat) were exposures to potentially rabid animals and occurred in areas/prefectures within 50km radius of a confirmed rabies case in a wild or domestic animal. Sixty-six per cent (68 of 104) of the exposures were reported in males and the mean age of the exposed persons was 34 years (range 6-83 years). In 82 incidents dogs were involved, in five incidents cats, in one a weasel and in one the animal was not identified by the exposed individual. In the dog incidents, stray dogs represented the majority (n=63; 77%) followed by domestic dogs (n=15; 18%) and shepherd dogs (n=4; 5%). In each incident a mean of 1.2 persons were exposed (range 1-6 individuals).

Rabies situation in the Balkans countries

Although Greece was declared rabies-free in 1987, reports of rabies in wild and domestic animals exist for the neighboring countries. In fact rabies appears to be prevalent in a number of reservoir species in southeastern Europe and in countries north and east of Greece. Recent phylogenetic analyses have shown a westward movement of rabies from Bulgaria to other Balkan countries suggesting that this is a local event unrelated to viral strains in Turkey. In addition, studies showed southward movement of rabies from Hungary, Serbia and Romania into Bulgaria. Generally, wildlife movement is implicated as being responsible for the transmission of rabies across the region.

3.2 Bernadette Abela-Ridder now responsible for rabies at WHO

WHO RBE editorial team

Following the retirement of Dr. Francois-Xavier Meslin, Dr Bernadette Abela-Ridder has recently taken on the role of team leader for neglected zoonotic diseases in the Department for the Control of Neglected Tropical Diseases of the World Health Organization. Previously, Bernadette worked in the Department of Food Safety and Zoonoses of WHO leading a capacity building network, the Global Foodborne Infections Network (GFN) and was the WHO focal point for the FAO, OIE, WHO Global Early Warning System for transboundary animal diseases, including zoonoses (GLEWS). She also managed the study to estimate the global burden of leptospirosis in humans. She is closely involved in advancing common areas of work of the FAO, OIE and WHO with regard

to zoonotic, food safety and other risks emerging at the human-animal-ecosystem interface.

Bernadette has also worked for the Food and Agriculture Organization of the U.N., for l'Institut de recherche pour le développement (IRD) in Cameroon on emergence of simian immunodeficiency viruses from non-human primates including bushmeat, the US Food and Drug Administration and clinical veterinary practice.

Bernadette received her veterinary medicine and PhD degrees from the Veterinary University of Vienna, Austria and her masters in epidemiology and tropical veterinary medicine from the University of Edinburgh, UK.

3.3 WHO Expert Consultation on Rabies – Second report available

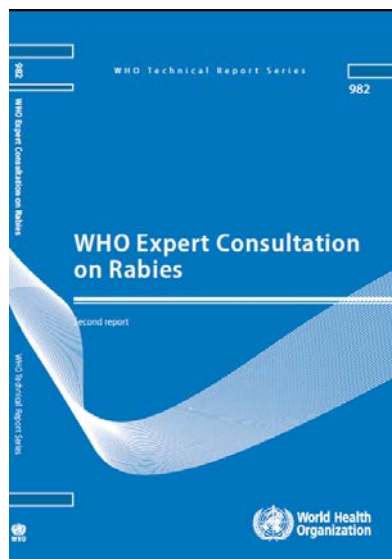
WHO RBE editorial team

This report of the World Health Organization (WHO) Expert Consultation on Rabies held in Geneva, Switzerland, on 18–20 September 2012 covers essential up-to-date information for rabies prevention and control throughout the world. The disease continues to occur mainly in poor communities, where measures that could prevent it in humans by controlling dog rabies are not implemented, even though a resolution adopted by the Third World Health Assembly in 1950 already mentioned the need for prevention of rabies in humans and its control in dogs. Advances have been made in the field of rabies, particularly in the production and use of human and animal biologicals, but the disease is still neglected, and no new WHO resolutions on rabies have been proposed to address human rabies transmitted by dogs.

Since the first WHO Expert Consultation on Rabies, in 2004,

WHO and its network of collaborating centres on rabies, specialized national institutions, members of the WHO Expert Advisory Panel on Rabies and partners such as the Bill & Melinda Gates Foundation, the Global Alliance for Rabies Control (GARC) and the Partners for Rabies Prevention (PrP), have been advocating the feasibility of rabies elimination regionally and globally, and promoting research into strategies. Those joint efforts have begun to break the cycle of rabies neglect, and rabies is becoming recognized as a priority for investment.

World Health Organization
WHO Expert Consultation on Rabies
Second report
WHO Technical Report Series, No. 982
ISBN 978 92 4 120982 3



3.4 Rabies cases detected in Slovak Republic

Prof. Jozef Bires, CVO
State Veterinary Administration of the Slovak Republic
Botanická No 17, 842 13 Bratislava /Slovak Republic

The rabies is the most dangerous occurring zoonosis. Therefore, the State Veterinary and Food Administration of the Slovak Republic has realized since the year 2000 the programme of rabies eradication, within which it regularly performs the oral vaccination of foxes by the air distribution.

In June 2009, the Slovak Republic was declared at the SCOFCAH meeting in Brussels as a rabies free country, because it fulfilled and observed the requirements for the declaration as a free country according to the „OIE-Terrestrial Animal Health Code“. Until 2013, the Slovak Republic was a rabies free country and the last case of rabies in the Slovak Republic was confirmed in August 2006 in a red fox in Bratislava region. The last positive case in a wild animal, excluding a fox, was recorded in December 2005 in Košice region, in a dog the case was recorded in May 2005 in Nitra region and in a domestic animal, excluding a dog, the case was recorded in January 2005 in Bratislava region in a cat.

With regard to an unfavourable epizootological situation in the Republic of Poland and in Ukraine, the State Veterinary and Food Administration of the Slovak Republic decided to continue in application of the National Programme of Rabies Eradication also after the year 2009. The vaccination area was defined in such a way as to take into the account to the greatest extent the risks connected with rabies, the observation of which is an inevitable assumption for a successful realization of rabies eradication and its control.

Nevertheless, in January 2013, the case of rabies in a dead fox was again confirmed after 7 years near borders with Poland on the territory of district Bardejov. By the end of May 2013 further 6 cases were confirmed.

Overview of rabies occurrence

Case No 1 – the dead fox found in the village Petrová, district Bardejov, rabies confirmed by the laboratory, the SVFI Dolný Kubín on 7.1.2013, the confirmatory examination by the National reference laboratory, the SVI Zvolen on 8.1.2013, the outbreak lifted on 17.4.2013

Case No 2 – the dead fox found in the cadastral territory of the village Kružlov, district Bardejov, rabies confirmed by the laboratory, the SVFI Dolný Kubín on 8.3.2013, the confirmatory examination by the National reference laboratory, the SVI Zvolen on 11.3.2013, the outbreak lifted on 19.6.2013

Case No 3 – the dead fox found in the village Stebník, district Bardejov, rabies confirmed by the laboratory, the SVFI Dolný Kubín on 15.3.2013, the confirmatory examination by the National reference laboratory, the SVI Zvolen on 18.3.2013, the outbreak lifted on 25.6.2013

Case No 4 – the fox shot in the cadastral territory of the village Rokytov, district Bardejov within the extraordinary monitoring, rabies confirmed by the laboratory, the SVFI Dolný Kubín on 20.4.2013, the confirmatory examination by the National reference laboratory, the SVI Zvolen on 23.4.2013, the outbreak lifted on 29.7.2013

Case No 5 – the marten killed in the town Bardejov, the urban area Tehelňa, rabies confirmed by the laboratory, the SVFI Dolný Kubín on 6.5.2013, the confirmatory examination by the National reference laboratory, the SVI Zvolen on 7.5.2013, the outbreak lifted on 14.8.2013

Case No 6 – the dog destroyed in the town Bardejov, the urban area Tehelňa, rabies confirmed by the laboratory, the SVFI Dolný Kubín on 6.5.2013, the confirmatory examination by the National reference laboratory, the SVI Zvolen on 7.5.2013, the outbreak lifted on 14.8.2013

Case No 7 – the dog destroyed in the village Richvald, district Bardejov, rabies laboratory confirmed by the National reference laboratory, the SVI Zvolen on 13.5.2013, the outbreak lifted on 22.8.2013

Owing to a properly defined vaccination area, appropriate eradication programme and effective vaccination, the Slovak Republic managed to get under the control newly arisen rabies outbreaks, which occurred near borders with Poland in the 1st half-year 2013 and thus to prevent the spreading of rabies into the inland.

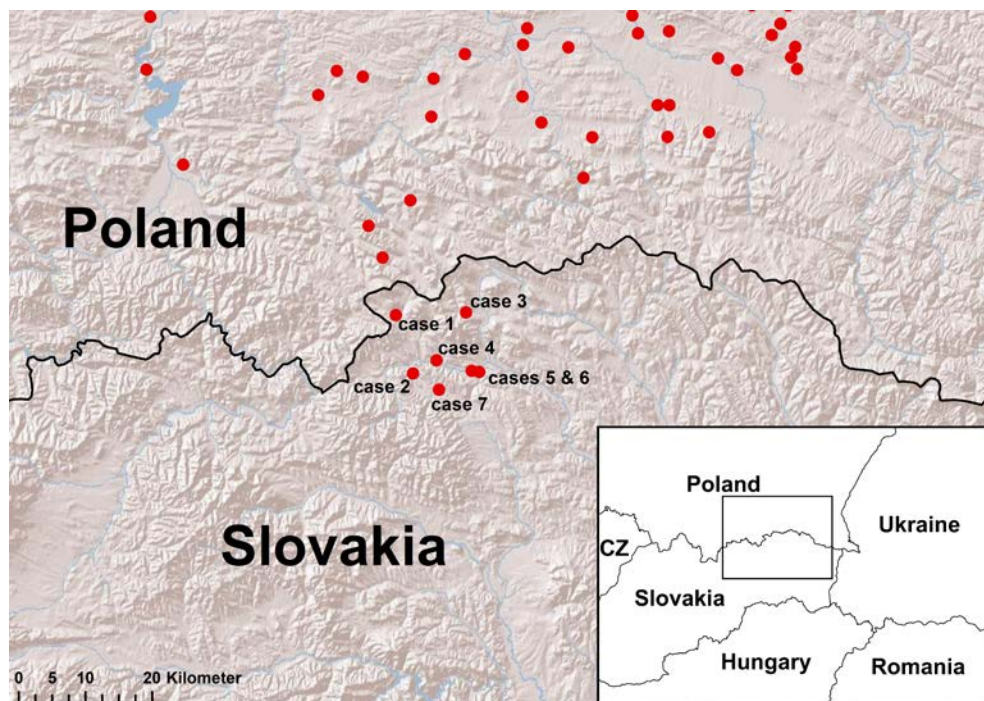


Fig. 1: Rabies cases in the Slovak Republic and adjacent Poland in the first and second quarter 2013.

4 Distribution of Rabies in Europe

4.1 Country summaries of rabies cases, 1st quarter 2013

01.01.13 - 31.03.13

Country		Domestic animals									Wildlife											bat	Human cases	total				
		dog	cat	cattle	equine	goat sheep	pig	stray dog	other	subtotal	fox	raccoon dog	raccoon	wolf	badger	marten	other mustelids	other carnivores	wild boar	roe deer	red deer				fallow deer	other	subtotal	
Name	Code																											
Albania	ALB *									0														0			0	
Austria	AUT *									0															0			0
Belarus	BLR	14	17	7	1			2		41	67	7			1	4	3			2					84		125	
Belgium	BEL *									0															0		0	
Bosnia - Hercegovina	BIH **									0															0		0	
Bulgaria	BGR **									0															0		0	
Croatia	HRV				1					1	8														8		9	
Cyprus	CYP *									0															0		0	
Czech Republic	CZH *									0															0		0	
Denmark	DNK *									0															0		0	
Estonia	EST *									0															0		0	
Finland	FIN *									0															0		0	
France	FRA *									0															0		0	
Germany	DEU									0															0	1	1	
Georgia	GEO	14		2			1		1	18							1							1		1	20	
Greece	GRC		1							1	9														9		10	
Hungary	HUN *									0															0		0	
Italy	ITA *									0															0		0	
Latvia	LVA *									0															0		0	
Lithuania	LTU	1								1															0		1	
Luxembourg	LUX *									0															0		0	
Macedonia	MKD *									0															0		0	
Malla	MLT *									0															0		0	
Moldova	MDA	6	3	17	1					27	5					1									6		33	
Montenegro	MNE *									0															0		0	
Norway	NOR *									0															0		0	
Poland	POL	2	4							6	72				2										74		80	
Romania	ROU	14	9	3		1	1	2		30	152					1									153		183	
Russian Federation	RUS	154	101	48	4	5	1	18		331	276	29		2		2							4	315	2	648		
Serbia	SRB									0	3														3		3	
Slovak Republic	SVK									0	3														3		3	
Slovenia	SVN *									0															0		0	
Spain	ESP	3								3															0		3	
Sweden	SWE *									0															0		0	
Switzerland + Lichtenstein	CHE *									0															0		0	
The Netherlands	NED *									0															0		0	
Turkey	TUR	38	3	24		4				69	3			1											1	5	74	
Ukraine	UKR	109	111	26	3	1				250	212	8	1		4	6	1								1	233	483	
Uniled Kingdom	UNK *									0															0		0	
TOTAL		355	249	127	10	11	3	22	1	778	810	44	1	3	5	14	8	1	0	2	0	0	0	6	894	1	3	1676
PER CENT		21.2%	14.9%	7.6%	0.6%	0.7%	0.2%	1.3%	0.1%	46.4%	48.3%	2.6%	0.1%	0.2%	0.3%	0.8%	0.5%	0.1%	0.0%	0.1%	0.0%	0.0%	0.4%	53.3%	0.1%	0.2%	100%	

4.2 Rabies cases per country and administrative units, 1st quarter 2013

01.01.13 - 31.03.13

Location	Domestic animals										Wildlife										bat	Human cases	total					
	dog	cat	cattle	equine	goat	sheep	pig	stray dog	other	subtotal	fox	raccoon dog	raccoon	wolf	badger	marten	other mustelides	other carnivores	wild boar	roe deer				red deer	fallow deer	other	subtotal	
BELARUS																												
Brest									1	7															7			8
Gomel	2	2	2				1		7	20	1				1										22			29
Grodno	4	7	5						16	15	3			1	2	1				2					24			40
Minsk	5	5					1		11	8	1				1	1									11			22
Mogilev	2								2	12	1					1									14			16
Vilebsk	1	2		1					4	5	1														6			10
TOTAL	14	17	7	1	0	0	2	0	41	67	7	0	0	1	4	3	0	0	2	0	0	0	0	84	0	0	125	
PER CENT	11,2%	13,6%	5,6%	0,8%	0,0%	0,0%	1,6%	0,0%	32,8%	53,6%	5,6%	0,0%	0,0%	0,8%	3,2%	2,4%	0,0%	0,0%	1,6%	0,0%	0,0%	0,0%	0,0%	67,2%	0,0%	0,0%	100%	
CROATIA																												
Dubrovačko - Neretvanska				1					1																0			1
Sisacko - Moslovačka									0	1															1			1
Špišsko - Dalmatinska									0	1															1			1
Varaždinska									0	1															1			1
Zagrebačka									0	5															5			5
TOTAL	0	0	0	1	0	0	0	0	1	8	0	0	0	0	0	0	0	0	0	0	0	0	0	8	0	0	9	
PER CENT	0,0%	0,0%	0,0%	11,1%	0,0%	0,0%	0,0%	0,0%	11,1%	88,9%	0,0%	0,0%	0,0%	0,0%	0,0%	0,0%	0,0%	0,0%	0,0%	0,0%	0,0%	0,0%	0,0%	88,9%	0,0%	0,0%	100%	
GERMANY																												
Berlin-OstStadt									0																0	1		1
TOTAL	0	0	0	0	0	0	0	0	0	0	0	0	0	0	0	0	0	0	0	0	0	0	0	0	1	0	1	
PER CENT	0,0%	0,0%	0,0%	0,0%	0,0%	0,0%	0,0%	0,0%	0,0%	0,0%	0,0%	0,0%	0,0%	0,0%	0,0%	0,0%	0,0%	0,0%	0,0%	0,0%	0,0%	0,0%	0,0%	100,0%	0,0%	100%		
GREECE																												
Kilkis									0	7															7			7
Kozani									0	1															1			1
Trikala		1							1	1															1			2
TOTAL	0	1	0	0	0	0	0	0	1	9	0	0	0	0	0	0	0	0	0	0	0	0	0	9	0	0	10	
PER CENT	0,0%	10,0%	0,0%	0,0%	0,0%	0,0%	0,0%	0,0%	10,0%	90,0%	0,0%	0,0%	0,0%	0,0%	0,0%	0,0%	0,0%	0,0%	0,0%	0,0%	0,0%	0,0%	0,0%	90,0%	0,0%	0,0%	100%	
LITHUANIA																												
Alytaus	1								1																0			1
TOTAL	1	0	0	0	0	0	0	0	1	0	0	0	0	0	0	0	0	0	0	0	0	0	0	0	0	0	1	
PER CENT	100,0%	0,0%	0,0%	0,0%	0,0%	0,0%	0,0%	0,0%	100,0%	0,0%	0,0%	0,0%	0,0%	0,0%	0,0%	0,0%	0,0%	0,0%	0,0%	0,0%	0,0%	0,0%	0,0%	0,0%	0,0%	0,0%	100%	
MOLDOVA																												
Moldova	6	3	17	1					27	5						1									6			33
TOTAL	6	3	17	1	0	0	0	0	27	5	0	0	0	0	0	1	0	0	0	0	0	0	0	6	0	0	33	
PER CENT	18,2%	9,1%	51,5%	3,0%	0,0%	0,0%	0,0%	0,0%	81,8%	15,2%	0,0%	0,0%	0,0%	0,0%	0,0%	3,0%	0,0%	0,0%	0,0%	0,0%	0,0%	0,0%	0,0%	18,2%	0,0%	0,0%	100%	

4.2 Rabies cases per country and administrative units, 1st quarter 2013 (continued)

01.01.13 - 31.03.13

Location	Domestic animals										Wildlife										bat	Human cases	total				
	dog	cat	cattle	equine	goat	sheep	pig	stray dog	other	subtotal	fox	raccoon dog	raccoon	wolf	badger	marten	other mustelides	other carnivores	wild boar	roe deer				red deer	fallow deer	other	subtotal
POLAND																											
Lubelskie									0	13														13			13
Malopolskie									0	13														13			13
Podkarpackie	2	4							6	46						2								48			54
TOTAL	2	4	0	0	0	0	0	0	6	72	0	0	0	0	0	2	0	0	0	0	0	0	0	74	0	0	80
PER CENT	2,5%	5,0%	0,0%	0,0%	0,0%	0,0%	0,0%	0,0%	7,5%	90,0%	0,0%	0,0%	0,0%	0,0%	0,0%	2,5%	0,0%	0,0%	0,0%	0,0%	0,0%	0,0%	0,0%	92,5%	0,0%	0,0%	100%
UKRAINE																											
Avtonomnaya Respublika Krym	1	2							3	1														1			4
Bolynskaja o.	3	2							5	14		1												15			20
Cherkasskaja o.	8	9							17	1														1			18
Chernigovskaja o.	8	4	1	1					14	8	6													14			28
Chernovitskaja o.		2		1					3															0			3
Dnepropetrovskaja o.	10	8	3						21	12	1													13			34
Donetskaja o.	5	5	1						11	4														4			15
Ivano-Frankovskaja o.			1						1	7					3	1								11			12
Khar'kovskaja o.	8	10	1						19	4														4			23
Khersonskaja o.	2	7							9	2														2			11
Khmel'nitskaja o.	4	1	2						7	8					1									9			16
Kirovogradskaja o.	7	6	3						16	9														9			25
Kiyev g.									0	1														1			1
Kiyevskaja o.	4	10							14	3														3			17
Luganskaja o.	1	1							2	1														1			3
L'vovskaja o.	3								3	5														5			8
Nikolayevskaja o.	2	4	3						9	2														2			11
Odesskaja o.	8	7	4						19	12					1	1							1	15			34
Poltavskaja o.	2	6							8						1									1			9
Rovenskaja o.	4	1	1						6	6														6			12
Sumskaja o.	1	5							6	2	1													3			9
Ternopol'skaja o.	2	1							3	6														6			9
Vinnitskaja o.	7	3							10	66					1									67			77
Zakarpatskaja o.	2	2							4	2														2			6
Zaporozhskaja o.	10	13	6	1	1				31	19						1								20			51
Zhitomirskaja o.	7	2							9	17					1									18			27
TOTAL	109	111	26	3	1	0	0	0	250	212	8	1	0	4	6	1	0	0	0	0	0	0	1	233	0	0	483
PER CENT	22,6%	23,0%	5,4%	0,6%	0,2%	0,0%	0,0%	0,0%	51,8%	43,9%	1,7%	0,2%	0,0%	0,8%	1,2%	0,2%	0,0%	0,0%	0,0%	0,0%	0,0%	0,0%	0,2%	48,2%	0,0%	0,0%	100%

4.2 Rabies cases per country and administrative units, 1st quarter 2013 (continued)

01.01.13 - 31.03.13

Location	Domestic animals										Wildlife										bat	Human cases	total			
	dog	cat	cattle	equine	goat sheep	pig	stray dog	other	subtotal	fox	raccoon dog	raccoon	wolf	badger	marten	other mustelides	other carnivores	wild boar	roe deer	red deer				fallow deer	other	subtotal
ROMANIA																										
Alba									0	4													4			4
Arges									0	1													1			1
Bacau									0	5													5			5
Bihor	2						1		3	5													5			8
Bistrita-Nasaud									0	22													22			22
Botosani					1				1	3													3			4
Braila	1								1	2													2			3
Brasov									0	5													5			5
Buzau	1	2					1		4	7													7			11
Calarasi									0	5													5			5
Cluj	3	2							5	7													7			12
Covasna									0	11													11			11
Dambovila									0	1													1			1
Galati	3								3	4													4			7
Giurgiu									0	1													1			1
Gorj	1								1	7													7			8
Harghita									0	1													1			1
Ialomita	1	1							2	1													1			3
Iasi		2							2	11													11			13
Iltov									0	1													1			1
Mures						1			1	1													1			2
Neamt									0	2													2			2
Olt	1	2							3	6													6			9
Prahova									0	3													3			3
Salaj									0	5													5			5
Satu Mare									0	1													1			1
Sibiu									0	2													2			2
Suceava			1						1	15													15			16
Teleorman	1								1	3													3			4
Timis									0	1													1			1
Tulcea									0	1													1			1
Valcea									0	1													1			1
Vaslui			1						1	3													3			4
Vrancea			1						1	4						1							5			6
TOTAL	14	9	3	0	1	1	2	0	30	152	0	0	0	0	0	1	0	0	0	0	0	0	153	0	0	183
PER CENT	7,7%	4,9%	1,6%	0,0%	0,5%	0,5%	1,1%	0,0%	16,4%	83,1%	0,0%	0,0%	0,0%	0,0%	0,0%	0,5%	0,0%	0,0%	0,0%	0,0%	0,0%	0,0%	83,6%	0,0%	0,0%	100%

4.2 Rabies cases per country and administrative units, 1st quarter 2013 (continued)

01.01.13 - 31.03.13

Location	Domestic animals										Wildlife											bat	Human cases	total			
	dog	cat	cattle	equine	goat	sheep	pig	stray dog	other	subtotal	fox	raccoon dog	raccoon	wolf	badger	marten	other mustelides	other carnivores	wild boar	roe deer	red deer				fallow deer	other	subtotal
RUSSIAN FEDERATION																											
Adygeja resp.		1							1														0		1		
Arhangel'skaja obl.	1								1														0		1		
Astrahanskaja obl.	2	4	2						8														2	3	11		
Belgorodskaja obl.	33	25	3		1				63	16														16	79		
Brjanskaja obl.	4	2							6	21	1		1											24	30		
Cecenskaja resp.			2						2															0	2		
Cuvasskaja resp.			1	2					3	3														3	6		
Dagestan resp.			2						2															0	2		
Ivanovskaja obl.	1	1							2	2													1	3	5		
Jaroslavskaja obl.	4						1		5		3													3	8		
Kabardino-Balkanskaja resp.	2	2	3				1		8															0	8		
Kalmykija resp.			1				1		2																0	2	
Kaluzskaja obl.	1	2	1						4	11	1													12	16		
Kostromskaja obl.									0		1													1	1		
Krasnodarskij kr.	2	1	3		2				8	2														2	10		
Kurskaja obl.	5	2	1						8	19	1													20	29		
Lipeckaja obl.	8	4					3		15	19														19	34		
Mordovija resp.									0	2															2	2	
Moskovskaja obl.	9	4					1		14	25	1													26	40		
Moskva g.	1								1	2														2	3		
Nizgorodskaja obl.	3				1				4	21														21	25		
Orlovskaja obl.	2	1	5						8	5														5	13		
Penzenskaja obl.	9	5					3		17	17														17	34		
Pskovskaja obl.	1	1							2	2	3													5	7		
Rjazanskaja obl.		1							1	1														1	2		
Rostovskaja obl.	5	4							9	2														2	11		
Sarabovskaja obl.	12	8	8		1		2		31	32			1											33	64		
Severnaja Osetija-Alanija resp.	5		4						9	1													1	2	11		
Smolenskaja obl.	9	5							14	6	1													7	21		
Stavropoľskij kr.	2	2	5						9	1														1	10		
Tambovskaja obl.	7	5	2	1					15	21														21	36		
Tul'skaja obl.	4	3							7	1														1	8		
Tverskaja obl.	5	1							6	11	17				1									29	35		
Uljanovskaja obl.	5	3							8	22						1								23	31		
Vladimirska obl.		2							2	3														3	6		
Volgogradskaja obl.	1	2	3						6	1														1	7		
Voronezskaja obl.	11	10	2	1		1	5		30	7														7	37		
TOTAL	154	101	48	4	5	1	18	0	331	276	29	0	2	0	2	2	0	0	0	0	0	0	4	315	0	2	648
PER CENT	23,8%	15,6%	7,4%	0,6%	0,8%	0,2%	2,8%	0,0%	51,1%	42,6%	4,5%	0,0%	0,3%	0,0%	0,3%	0,3%	0,0%	0,0%	0,0%	0,0%	0,0%	0,0%	0,6%	48,6%	0,0%	0,3%	100%

Location	Domestic animals										Wildlife											bat	Human cases	total					
	dog	cat	cattle	equine	goat	sheep	pig	stray dog	other	subtotal	fox	raccoon dog	raccoon	wolf	badger	marten	other mustelides	other carnivores	wild boar	roe deer	red deer				fallow deer	other	subtotal		
TURKEY																													
Afyon	3									3															0		3		
Agri	2		6		1					9															0		9		
Ankara			1							1	1														1		2		
Ardahan										0			1												1		1		
Artvin	2									2															0		2		
Aydin		1	1							2															0		2		
Balikesir										0	2														2		2		
Bingol			2							2															0		2		
Bursa	1	1								2															0		2		
Çankiri										0															1	1	1		
Diyarbakir	1		3		2					6															0		6		
Elazig	2									2															0		2		
Erzincan	1									1															0		1		
Erzurum	3									3															0		3		
Giresun	4									4															0		4		
Gümüşhane		1								1															0		1		
Igdir	5		3							8															0		8		
Istanbul	2									2															0		2		
Izmir	1		3							4															0		4		
Kirsehir	1									1															0		1		
Konya			1							1															0		1		
Kütahya	1									1															0		1		
Malatya			1							1															0		1		
Manisa			2		1					3															0		3		
Mardin	1									1															0		1		
Nevsehir	2									2															0		2		
Sanliurfa	3		1							4															0		4		
Sirnak	1									1															0		1		
Van	2									2															0		2		
TOTAL	38	3	24	0	4	0	0	0	0	69	3	0	0	1	0	0	0	0	0	0	0	0	0	0	1	5	0	0	74
PER CENT	51,4%	4,1%	32,4%	0,0%	5,4%	0,0%	0,0%	0,0%	0,0%	93,2%	4,1%	0,0%	0,0%	1,4%	0,0%	0,0%	0,0%	0,0%	0,0%	0,0%	0,0%	0,0%	0,0%	1,4%	6,8%	0,0%	0,0%	100%	

4.2 Rabies cases per country and administrative units, 1st quarter 2013 (continued)

01.01.13 - 31.03.13

Location	Domestic animals									Wildlife													bat	Human cases	total			
	dog	cat	cattle	equine	goat	sheep	pig	stray dog	other	subtotal	fox	raccoon dog	raccoon	wolf	badger	marten	other mustelides	other carnivores	wild boar	roe deer	red deer	fallow deer				other	subtotal	
GEORGIA																												
Foi	1								1																0			1
Imereti									0																0		1	1
Lagodekhi	1								1																0			1
Tskhaltubo	2		1						3																0			3
Samtredia	1								1																0			1
Kaspi	1								1																0			1
Chkhorotskhu	2								2																0			2
Signagi									0								1							1				1
Khobulefi	2								2																0			2
Gurjaani	2						1		3																0			3
Dedoplistskharo	1								1																0			1
Khobi			1						1																0			1
Batumi								1	1																0			1
Khoni	1								1																0			1
TOTAL	14	0	2	0	0	1	0	1	18	0	0	0	0	0	0	0	1	0	0	0	0	0	0	1	0	1	20	
PER CENT	70,0%	0,0%	10,0%	0,0%	0,0%	5,0%	0,0%	5,0%	90,0%	0,0%	0,0%	0,0%	0,0%	0,0%	0,0%	0,0%	5,0%	0,0%	0,0%	0,0%	0,0%	0,0%	0,0%	5,0%	0,0%	5,0%	100%	
SERBIA																												
* no region specified									0	3															3			3
TOTAL	0	0	0	0	0	0	0	0	0	3	0	0	0	0	0	0	0	0	0	0	0	0	0	0	3	0	0	3
PER CENT	0,0%	0,0%	0,0%	0,0%	0,0%	0,0%	0,0%	0,0%	0,0%	100,0%	0,0%	0,0%	0,0%	0,0%	0,0%	0,0%	0,0%	0,0%	0,0%	0,0%	0,0%	0,0%	0,0%	0,0%	100,0%	0,0%	0,0%	100%
SPAIN																												
Ciudad Autonoma de Melilla	3								3																0			3
TOTAL	3	0	0	0	0	0	0	0	3	0	0	0	0	0	0	0	0	0	0	0	0	0	0	0	0	0	0	3
PER CENT	100,0%	0,0%	0,0%	0,0%	0,0%	0,0%	0,0%	0,0%	100,0%	0,0%	0,0%	0,0%	0,0%	0,0%	0,0%	0,0%	0,0%	0,0%	0,0%	0,0%	0,0%	0,0%	0,0%	0,0%	0,0%	0,0%	0,0%	100%
SLOVAK REPUBLIC																												
* no region specified									0	3															3			3
TOTAL	0	0	0	0	0	0	0	0	0	3	0	0	0	0	0	0	0	0	0	0	0	0	0	0	3	0	0	3
PER CENT	0,0%	0,0%	0,0%	0,0%	0,0%	0,0%	0,0%	0,0%	0,0%	100,0%	0,0%	0,0%	0,0%	0,0%	0,0%	0,0%	0,0%	0,0%	0,0%	0,0%	0,0%	0,0%	0,0%	0,0%	100,0%	0,0%	0,0%	100%
SLOVENIA																												
Podravska									0	1															1			1
TOTAL	0	0	0	0	0	0	0	0	0	1	0	0	0	0	0	0	0	0	0	0	0	0	0	1	0	0	1	
PER CENT	0,0%	0,0%	0,0%	0,0%	0,0%	0,0%	0,0%	0,0%	0,0%	100,0%	0,0%	0,0%	0,0%	0,0%	0,0%	0,0%	0,0%	0,0%	0,0%	0,0%	0,0%	0,0%	0,0%	100,0%	0,0%	0,0%	100%	

5 Trend tables

5.1 Comparison of the reporting quarter (I/2013) with the previous quarter (IV/2012)

NAME	Total			Wildlife			Domestic animals			Bats			Human		
	I 2013 (no.)	IV 2012 (no.)	Difference	I 2013 (no.)	IV 2012 (no.)	Difference	I 2013 (no.)	IV 2012 (no.)	Difference	I 2013 (no.)	IV 2012 (no.)	Difference	I 2013 (no.)	IV 2012 (no.)	Difference
Albania															
Austria															
Belarus	125	153	-28	84	97	-13	41	56	-15						
Belgium															
Bosnia - Hercegovina		3	-3		3	-3									
Bulgaria															
Croatia	9	21	-12	8	21	-13	1		1						
Cyprus															
Czech Republic															
Denmark															
Estonia															
Finland															
France		1	-1								1	-1			
Germany	1	1								1	1				
Greece	10	9	1	9	7	2	1	2	-1						
Hungary															
Italy															
Latvia															
Lithuania	1		1				1		1						
Luxembourg															
Macedonia															
Malta															
Moldova	33	73	-40	6	8	-2	27	65	-38						
Montenegro															
Norway															
Poland	80	121	-41	74	100	-26	6	20	-14		1	-1			
Romania	183	147	36	153	99	54	30	48	-18						
Russian Federation	648	724	-76	315	342	-27	331	381	-50				2	1	1
Serbia	3	6	-3	3	5	-2		1	-1						
Slovak Republic	3		3	3		3									
Slovenia	1	1		1	1										
Spain	3	3					3	2	1		1	-1			
Sweden															
Switzerland + Lichtenstein															
The Netherlands		3	-3								3	-3			
Turkey	74	96	-22	5	7	-2	69	88	-19					1	-1
Ukraine	483	751	-268	233	319	-86	250	432	-182						
United Kingdom															
TOTAL	1657	2113	-456	894	1009	-115	760	1095	-335	1	7	-6	2	2	0

5.2 Comparison of the reporting quarter (I/2013) with the same quarter of the previous year (I/2012)

NAME	Total			Wildlife			Domestic animals			Bats			Human		
	I 2013 (no.)	I 2012 (no.)	Difference	I 2013 (no.)	I 2012 (no.)	Difference	I 2013 (no.)	I 2012 (no.)	Difference	I 2013 (no.)	I 2012 (no.)	Difference	I 2013 (no.)	I 2012 (no.)	Difference
Albania															
Austria															
Belarus	125	143	-18	84	91	-7	41	51	-10					1	-1
Belgium															
Bosnia - Hercegovina		1	-1		1	-1									
Bulgaria															
Croatia	9	54	-45	8	49	-41	1	5	-4						
Cyprus															
Czech Republic															
Denmark															
Estonia															
Finland															
France															
Germany	1		1							1		1			
Greece	10		10	9		9	1		1						
Hungary															
Italy															
Latvia															
Lithuania	1	4	-3		3	-3	1	1							
Luxembourg															
Macedonia		3	-3		2	-2		1	-1						
Malta															
Moldova	33	48	-15	6	11	-5	27	37	-10						
Montenegro		1	-1					1	-1						
Norway															
Poland	80	36	44	74	32	42	6	4	2						
Romania	183	154	29	153	124	29	30	29	1					1	-1
Russian Federation	648	398	250	315	211	104	331	186	145				2	1	1
Serbia	3	12	-9	3	12	-9									
Slovak Republic	3		3	3		3									
Slovenia	1	1		1	1										
Spain	3	1	2				3	1	2						
Sweden															
Switzerland + Lichtenstein															
The Netherlands		8	-8					1	-1		7	-7			
Turkey	74	96	-22	5	15	-10	69	81	-12						
Ukraine	483	541	-58	233	241	-8	250	300	-50						
United Kingdom															
TOTAL	1657	1501	156	894	793	101	760	698	62	1	7	-6	2	3	-1

List of Contributors

ALB Albania

Kujtim Mersini, DVM, MSc
National Veterinary Epidemiology Unit
Food Safety and Veterinary Institute
Rr. Aleksander Moisiu no.10
Tirana / Albania
Tel.: +355 4 2373096
Fax: +355 682738752
Email: mersini2003@yahoo.com

AUT Austria

Mag. Ulrich Herzog, CVO
Bundesministerium für Gesundheit und
Frauen
Bereich IV/B (Verbraucher-Gesundheit)
Radetzkystraße 2
A-1030 Wien
Tel. +43-1-7 11 00-4824
Fax +43-1-7 10 41 51
E-mail: ulrich.herzog@bmgf.gv.at

BLR Belarus

Dr. A.M. Axenov
Head of the Central Board of Veterinary
Medicine
Ministry of Agriculture and Food
Kirova 15
Minsk /Belarus
Tel: +375-17-227 6623
Fax: +375-17-227 42 96
+375-17-227 57 54
E-mail: vetinsp@mshp.minsk.by

BEL Belgium

Dr. Pierre Naassens, CVO
AFSCA – Agence fédérale pour la
Sécurité de la Chaîne alimentaire
Direction Générale de la Politique de
Contrôle
55, Boulevard du Jardin Botanique
B-1000 Bruxelles
Tel. +32-2-211 86 42
Fax +32-2-211 86 30

Responsible experts:

Dr. Bernard Brochier; Dr. Vanessa Suin;
Dr. Steven Van Gucht

National Reference Centre of Rabies
Viral Diseases
Scientific Institute of Public Health (WIV-
ISP)
Rue Engelandstraat 642
1180 Brussels
Belgium

BIH Bosnia and Herzegovina

Department of Infectious Diseases
Veterinary Faculty Sarajevo
Zmaja od Bosne 90
Sarajevo 71000 /Bosnia and
Herzegovina
Tel: +387-61-160 361
E-mail: vetzar@bih.net.ba

Dr. Sc. Drago N. Nedic
Ministry Agriculture, Forestry and
Water Management of Republika Srpska
Milosa Obilica 51
76300 Bijeljina, Republika Srpska
Bosnia and Herzegovina
Tel: +387-55-401 812,
-211 506
-403 508
Fax: +387-55-403 508
-472 353

E-mail: nedicd@rstel.net
nedicd@vetservice.org

Web: www.vetservice.org

BUL Bulgaria

Dr. Petya Petkova
National Veterinary Service
Animal Health Directorate
15A "Pencho Slaveikov" blvd.
1606 Sofia, Bulgaria
Tel: +359 2 915 98 42
Fax: +359 2 952 38 35

HVR Croatia

Dr. Ljerka Zeba
Veterinary Administration
Ministry of Agriculture and Forestry
Vukovarska 78
10000 Zagreb, Republic of Croatia
Tel: +385 1 6106207
Fax: +385 1 6109207
E-mail: ljerka.zeba@mps.hr

CYP Cyprus

Dr. P. Economides, CVO
Director of Veterinary Services
Ministry of Agriculture, Natural
Resources and Environment - Veterinary
Services -
1417 Nicosia /Cyprus
Tel. +357-2-80 52 0
Fax +357-2-33 28 03
E-mail vet.services@cytanet.com.cy

CZH Czech Republic

MVDr. Josef Vitásek
State Veterinary Administration CR
Slezská 7
CZ – 120 00 Praha 2 / Czech Republic
Tel.: +420 – 227 010 144
Fax : +420 – 227 010 195
E-mail: j.vitasek@svscr.cz

Responsible expert:

MVDr. Ivan Nágľ
National Reference Laboratory for Rabies
State Veterinary Institute Prague
Sídlištní 136/24
CZ -165 03 Praha 6 – Lysolaje
Tel. +420 251 031 281
Fax +420 220 920 655
E-mail: i.nagl@svupraha.cz

DNK Denmark

Dr. Per Henriksen, CVO
Ministry for Food, Agriculture and
Fisheries
Danish Veterinary and Food
Administration
Stationsparken 31-33
DK-2600 Glostrup
Tel.: +45 7227 6900
Email: pesh@fvst.dk

Responsible expert:

Tina Mørk
Ministry for Food, Agriculture and
Fisheries
Danish Veterinary and Food
Administration
Stationsparken 31-33
DK-2600 Glostrup
Tel.: +45 7227 6541
Email: tm@fvst.dk

EST Estonia

Dr. Matti Nautras, CVO
Head of Animal Health Department
Veterinary and Food Broad of Estonia
Väike-Paala-Street 3
11415 Tallinn /Estonia
Tel. +372-605 1732
Fax +372-638 0210
E-mail nautras@vet.agri.ee
Responsible expert:
Dr. Külli Must
Head of Department
Veterinary and Food Laboratory
Kreutzwaldi 30
51006 Tartu /Estonia
Tel: +372-742 1246
Fax: +372-742 1730
E-mail: kylli@vetlab.ee

FIN Finland

Director General Dr. Matti Aho, CVO
Ministry of Agriculture and Forestry
Department of Food and Health
PO BOX 30
FI-00023 Government
Finland
Tel: +358 9 160 53380
Fax: +358 9 1605 4777,
+358-9-1605 3338
E-mail cvo-finland@mmm.fi

Responsible expert:

Tiia Tuupanen
Finnish Food Safety Authority Evira
Mustialankatu 3, FI-00790 Helsinki,
Finland
tel. +358 40 489 3348
fax +358 20 77 24355
E-mail: tiia.tuupanen@evira.fi
Web: www.mmm.fi

FRA France

Dr. Florence Cliquet
ANSES
Nancy laboratory for rabies and wildlife
Technopôle Agricole et Vétérinaire
BP 40009
54220 Malzéville, France
Tel: +33-3-83.29.89.50
Fax: +33-3-83.29.89.59
E-mail: f.cliquet@nancy.afssa.fr
Web: www.anses.f

DEU Germany

Dr. Karin Schwabenbauer, CVO
Fed. Ministry of Food, Agriculture and
Consumer Protection
PF 14 02 70, D-53103 Bonn, Germany
Tel: +49 228 529 41 5
Fax: +49 228 529 35 53
E-mail: poststelle@bmelv.bund.de

Responsible experts:

Dr. Thomas Müller
Dr. Conrad Freuling
WHO Collaborating Centre for Rabies
Surveillance and Research
Institute of Molecular Biology, Friedrich-
Loeffler-Institute
- Federal Research Institute for Animal
Health –
Südufer 10, 17493 Greifswald - Insel
Riems, Germany
tel: ..49 38351 71660/659
fax: ..49 38351 71174
email: who-rabies@fli.bund.de

GEO Georgia

Mikheil Sokhadze, CVO
Ministry of Agriculture
National Food Agency
6 Marshal Gelovani Ave.
Zip 0159
Tbilisi, Georgia
Tel: +32-91 91 67 (110)
E-mail: mikheilsokhadze@nfa.gov.ge

Natia Kartskhia

Animal Especially Dangerous Infectious
Diseases
Supervision and Risk Analysis Division.
6 Marshal Gelovani Ave.
Tbilisi, Georgia
Zip 0159
Tel: +32-91 91 67 (104)
Mob: +32- 599 85 09 30
E-mail: natia.kartskhia@nfa.gov.ge

GRC Greece

Konstantia Tasioudi
Institute of Infectious and Parasitic
disease
25 Neapoleos street. Agia Paraskevi
15310
Greece
Tel, Fax: +30 210 6011499
viruslab.ath@gmail.com

HUN Hungary

Dr. Tibor Balint
Dr. Zsolt Földi
Ministry of Agriculture and Regional
Development
Animal Health and Food Control
Department
H-1860 Budapest 55. Pf. 1
Tel. +36-1 3014329 and 332 7986
Fax +36-1 301 4669
E-mail foldiz@oai.hu

ISL Iceland

Dr. Halldor Runolfsson
Chief Veterinary Officer
Ministry of Agriculture, Veterinary
Services
Solvholsgata 7
150 Reykjavik /Iceland
Tel. +354-560 9750
Fax +354-552 1160
E-mail halldor.runolfsson@lan.stjr.is

IRE Ireland

Dr. J. Melville
Superintending Veterinary Inspector
Department of Agriculture, Food and
Forestry
Agriculture House

Dublin 2/Ireland

Tel: +353-1-607 2981
Fax: +353-1-661 2440

Responsible expert:

Dr Patrick Lenihan
Senior Superintending Research Officer
Virology Division
Central Veterinary Research Laboratory
Abbotstown, Blanchardstown
Dublin 15

ITA Italy

Dr. Franco Mutinelli
Istituto Zooprofilattico
Sperimentale delle Venezie
Viale dell'Università, 10
I-35020 Legnaro (PD) /Italy
Tel: +39-049-80 84 259
Fax: +39-049-80 84 258
E-mail: fmutinelli@izsvenezie.it

LVA Latvia

Dr. Mareks Samohvalovs
Dr. Emils Jegers
Food and Veterinary Service
Peldu Street 30,
Riga, LV-1050, Latvia
Tel: +371 67095230
Fax: +371 67322727
E-mail: pvd@pvd.gov.lv

LTU Lithuania

Dr. K. Lukauskas
Dr. V. Kiudulas,
Animal Health Department
State Food and Veterinary Service
Siesikų 19, LT-07170 Vilnius
E-mail: vvt@vet.lt
vkiudulas@vet.lt

LUX Luxembourg

Dr. Arthur Besch, CVO
Inspection Vétérinaire
Grand-Duché de Luxembourg
Administration des Services vétérinaires
93, rue d'Anvers
Boîte postale 1403
L-1014 Luxembourg
Tel: +352-478 2539
Fax: +352-407 545
E-mail: Arthur.Besch@asv.etat.lu

MKD Macedonia

Toni Kirandjiski
Food and Veterinary Agency
Veterinary Directorate
Animal Health and Welfare Sector
Ministry of Agriculture Forestry and
Water Economy

"Treta Makedonska udarna brigada" bb
1000 Skopje/Macedonia
Tel.: +389-2-3112 205
Fax: +389-2-3112 265/308
Email: tkirandziski@veterina.gov.mk

Responsible expert:
Slavcho Mrenoshki, DVM, MSc, PhD,
Associate Professor
Faculty of Veterinary Medicine Skopje
Department of Microbiology and
Immunology
Lazar Pop Trajkov 5-7
1000 Skopje/Macedonia
Tel.: +389-2-3240768
Fax: + 389-2-3114619
Email: mrenoski@fvm.ukim.edu.mk

MNE Montenegro

Mevlida Hrapovic
Veterinary administration of the Republic
of Montenegro
Bulevar Sv.Petra Cetinjskog br 9
81000 Podgorica, Montenegro
Tel: +38 2 81 201 945;
Fax: +38 2 81 201 946
e-mail: mevlida.hrapovic@vu.gov.me

MDA Republic of Moldova

Dr Vasile Bahau
Deputy Director
National Food Safety Agency
Ministry of Agriculture & Food Industry
Bld Stefan cel Mare, 162, str
MD-2004 Chisinau
Tel.: (373) 22 23 23 53
Fax: (373) 22 21 01 57
E-mail: info@ansa.gov.md,
vasile.bahau@ansa.gov.md

NED Netherlands

Dr. P.W.de Leeuw
Dutch Ministry of Agriculture, Nature and
Food
Bezuidenhoutseweg 73 - P.O. Box 20401
NL-2500 EK's-Gravenhage /Netherlands

Dr. L. Züchner
Food and Consumer Product Safety
Authority
De Stoven 22
NL-7206 AX Zutphen /Netherlands
Tel: +31-575-58 8 100
Fax: +31-575-588 8 200
E-mail: lothar.zuchner@vwa.nl

NOR Norway

Dr. Keren Bar-Yaacov, CVO
Norwegian Food Safety Authority, Head
Office

P.O. Box 383
N-2381 Brumunddal, Norway
Tel: +47 23 21 68 00
Fax: +47 23 21 68 01
E-mail: postmottak@mattilsynet.no

POL Poland

Janusz Zwiasek, DVM
Chief Veterinary Officer
General Veterinary Inspectorate
Veterinary Inspection
30, Wspolna Str.
00-930 Warsaw/Poland
Tel.: +48 22 623 20 89
Fax: +48 22 623 14 08
Email: wet@wetgiw.gov.pl

POL Poland

Responsible expert:
Prof. Jan F. Zmudzinski
National Veterinary Research Institute
Department of Virology
National Reference Laboratory for Rabies
57 Partyzantow Avenue
24-100 Pulawy/Poland
Tel.: +48 81 889 32 61
Fax: +48 81 886 25 95
Email: jfzmudzi@piwet.pulawy.pl

Pawel Makowski, DVM
Animal Health and Welfare Office
General Veterinary Inspectorate
Veterinary Inspection
30, Wspolna Str.
00-930 Warsaw/Poland
Tel.: +48 22 623 22 42
Fax: +48 22 623 14 08
Email: pawel.makowski@wetgiw.gov.pl

PRT Portugal

Dr.C.A.M.de Andrade
Fontes
Direccao-Geral da Pecuaria

ROU Romania

Prof. Gabriel Predoi, CVO
General Director of the Sanitary
Veterinary General Direction, National
Sanitary Veterinary and Food Safety
Authority
Bd. Carol I, nr. 24, sector 3
Bucuresti, cod 70.033 /Romania
Tel: +40-21-3157875
Fax: +40-21-3124967
E-mail: predoi@ansv.ro

RUS Russian Federation (European part)

Prof. V.A.Vedernikov
Dr. I.V.Baldina

The Kovalenko All-Russian
Inst. of Exper. Veterinary Medicine
109455, Moscow, Ryazansky prosp., 24
Tel: +495 377-9483
Fax: +495 970-0369
E-Mail: epizootviev@mail.ruDr.
N.A.Yaremenko
Dr. S.A.Kolomytzev
Department of veterinary and livestock
Ministry of Agriculture
107139, Moscow, Orlikov per., 1/11
Tel: +495 975-5423
Fax: +495 975-5423
E-mail: n.yaremenko@vet.mcx.ru

Responsible expert:

Dr Artem Metlin
Federal Centre for Animal Health,
600901, Vladimir, Russia.
Fax +74 922260753
E-mail artem.metlin@inbox.ru

Prof. A.A.Movsesyants
Scientific Centre of Expertise of Medicals
Devices
119002, Moscow,
Per. Sivtzev Vrazhek, 41
Tel. +7 499 2413784
E-mail: Movsesyans_AA@gisk.ru

SRB Serbia

Prof. Dr Dušan Lalošević (Director)
Dr. Nenad Vranješ (Rabies Epidemiology
and prevention)
Dr. Srđan Stankov (Rabies laboratory)
Pasteur Institute Novi Sad
Hajduk Veljkova 1 / P.O. Box 208
21000 Novi Sad / Serbia
Tel.: +381 21 6611 003
+381 21 420 528
Fax: +381 21 6611 003
Email: paster-ns@neobee.net

SVK Slovak Republic

Prof. Josef Bires, CVO
Roman Matejčík, DVM
State Veterinary Administration of the
Slovak Republic
Botanická No 17
842 13 Bratislava /Slovak Republic
Tel. +421-2-60 257 227
Fax +421-2-65 411 159
E-mail welfare@svssr.sk

Responsible expert:

Miroslav Mojžiš, DVM
Štátny veterinárny ústav Zvolen
Pod Dráhami No. 918
960 86 Zvolen /Slovak Republic

SVN Slovenia

Aleš Brecelj, MSc, DVM
Ministry of Agriculture, Forestry and
Food
Veterinary Administration of the Republic
of Slovenia
Parmova 53, 1000 Ljubljana / SLOVENIA
Tel: +386-1-300 13 00
Fax: +386-1-300 13 56
E-mail: ales.brecelj@gov.si
Web: www.sigov.si/vurs

Responsible expert:

Peter Hostnik, PhD, DVM
National Veterinary Institute, Unit for the
diagnostic of contagious and other
diseases,
Laboratory of Virology
Gerbičeva 60
1000 Ljubljana / SLOVENIA
Tel: +386-1-477 91 00
Fax: +386-1-477 93 52
E-mail: peter.hostnik@vf.uni-lj.si

ESP Spain

Responsible expert

Diagnóstico:

Sr. D. Juan E. Echevarría Mayo
Servicio de Microbiología Diagnóstica
Centro Nacional de Microbiología
Instituto de Salud Carlos III
Ministerio de Sanidad y Consumo
Ctra. Majadahonda-Pozuelo s/n
28220 Majadahonda, Madrid
Tel: +34-91-509 79 01
Fax: +34-91-509 79 66
E-mail: jecheva@isciii.es

Epidemiología:

Sra. Elena Rodríguez Valín
Centro Nacional de Epidemiología
Instituto de Salud Carlos III
Ministerio de Sanidad y Consumo
C/ Sinesio Delgado, 6
E-28029 Madrid
Tel: +34-91-387 78 02
Fax: +34-91-387 78 16
E-mail: ervalin@isciii.es

Elena Garcia Villacieros
Blanca García Martín
S.G. de Sanidad Exterior
Ministerio de Sanidad, Servicios Sociales
e Igualdad
Paseo del Prado 18
28014 Madrid, Spain
Tel: 91 5964165
Fax: 91 3601343
E-mail: saniext@msssi.es
egarciav@msssi.es, bgarciam@msssi.es

SWE Sweden

Dr. Leif Denneberg
National Board of
Agriculture Department for Animal
Production and Health
SE-551 82 Jönköping /Sweden
Tel. +46-36-15 50 00
Fax: +46-36-30 81 82
E-mail: leif.denneberg@sjv.se

Responsible expert:

Professor Anders Engvall
National Veterinary Institute
SE-751 89 Uppsala
Tel: +46-18-67 40 00
Fax: +46-18-67 44 45
E-mail: anders.engvall@sva.se

CHE Switzerland

PD Reto Zanoni
Dr. Urs Breitenmoser
University of Bern - Swiss Rabies Centre
Institute of Veterinary Virology
Länggass Str. 122
CH-3012 Bern /Switzerland
Tel: +41-31-631 23 78
Fax: +41-31-631 25 34
E-Mail: zanoni@ivv.unibe.ch
breitenmoser@ivv.unibe.ch
Web: www.cx.unibe.ch/ivv

TUR Turkey

Asso.Prof.Dr. Muzaffer AYDEMİR
Ministry of Agriculture and Rural Affairs
General Directorate of Protection and
Control
Esat cad. No. 3
06100 Bakanlıklar, Ankara /Turkey
Tel: +90-312-41 82 436
Fax: +90-312-41 78 209

Responsible expert:

Dr. Orhan Aylan, Chief of Rabies
Laboratory
Etlik Central Veterinary Control and
Research Institute
06020 Etlik, Ankara /Turkey
Tel: +90-312-32 60 090 / 154
Fax: +90-312-32 11 755

UKR Ukraine

Dr. V.Gorzheev
Ministry of Agrarian Policy
State Department of Veterinary and
Phytosanitary Service of Ukraine
Grinchenko,1
01001 Kyiv/Ukraine
Tel.: +380 44 279 12 70
Fax: +380 44 279 48 83

Dr. Zhanna Drozhzhe
Head of Virology Department
State Research Institute of Laboratory
Diagnostics and Veterinary Sanitary
Expertise
Donetskaja Street 30
03151 Kyiv/ Ukraine
Tel.: +380-44-243 37 55
Fax: +380-44-242-37 55
Email: biotech@astral.kiev.ua

UNK United Kingdom

Mr Nigel Gibbens BVetMed MSc MRCVS,
CVO
Mr David Harris
Mr Balazs Toth DrMedVet MRCVS
Department for Environment, Food and
Rural Affairs
Area 5D Nobel House
17 Smith Square, London SW1P 3JR
Tel. +44-207-238 6047
Fax +44-207-238 5051
e-mail david.c.mouat@defra.gsi.gov.uk
balazs.toth@defra.gsi.gov.uk

Responsible expert:

Dr Anthony R Fooks MBA PhD CBIOL FSB
Head of Wildlife Zoonoses and Vector-
Borne Diseases Research Group
Statutory and Exotic Viruses Sub-
Programme Manager
Animal Health and Veterinary
Laboratories Agency (AHVLA)
Woodham Lane, New Haw
Addlestone, Surrey. KT15 3NB UK
Tel: +44 1932 357840
+44 7733 308313
Fax: +44 1932 357239
GTN: 3956 2840
E-mail: Tony.Fooks@ahvla.gsi.gov.uk
Web: www.defra.gov.uk/ahvla

**Please inform the editor about
changes of contact details!**


RABIES CASES IN EUROPE


1st QUARTER 2013

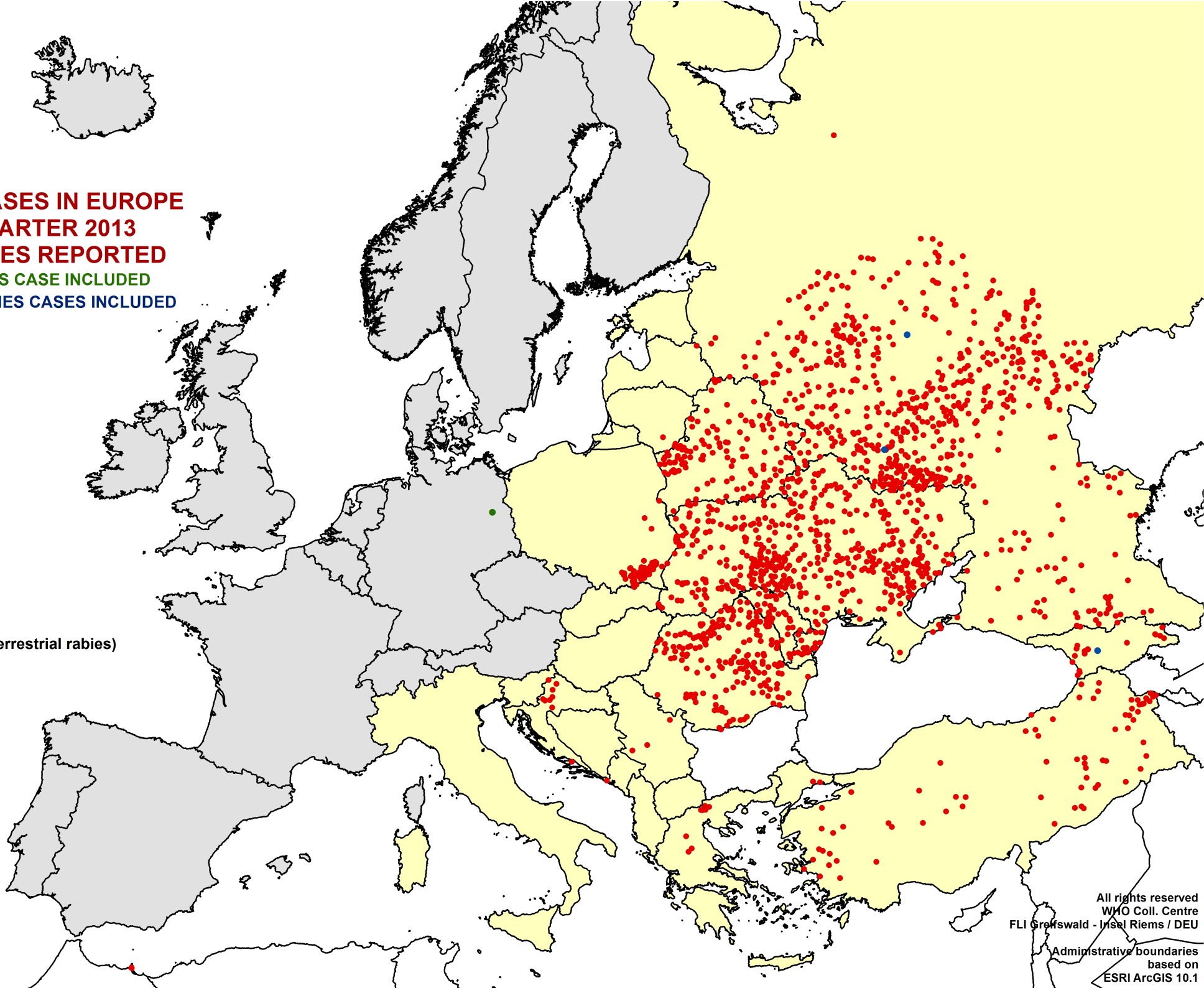
1677 CASES REPORTED

1 BAT RABIES CASE INCLUDED

3 HUMAN RABIES CASES INCLUDED

 rabies free (terrestrial rabies)

 no data



All rights reserved
WHO Coll. Centre
FLI Greifswald - Insel Riems / DEU

Administrative boundaries
based on
ESRI ArcGIS 10.1