

RABIES BULLETIN EUROPE

Volume 34 No 2 Quarter 2 2010

Published October 2010

CONTENTS

1	Editorial	3
2	Summary of rabies cases in Europe	4
3	Miscellaneous Article	
3.1	Rabies in Bavaria (Germany) in an imported puppy from Bosnia-Herzegovina	5
3.2	Development of harmonised schemes for monitoring and reporting of rabies in animals in the European Union	7
4	Distribution of rabies in Europe	
4.1	Country summaries of rabies cases, 2 nd quarter 2010	9
4.2	Rabies cases per country and administrative units, 2 nd quarter 2010	10
4.3	Trend tables	
4.3.1	Comparison of the reporting quarter (II/2010) with the previous quarter (I/2010)	15
4.3.2	Comparison of the reporting quarter (II/2010) with the same quarter of the previous year (II/2009)	16
5	List of contributors	17

Map of rabies cases in Europe, 2nd quarter 2010

Principal Editor: Dr. Conrad Freuling

Associated Editor: Dr. Thomas Müller

Technical Support: Anke Kliemt
Heike Kubitzka

Contact: WHO Collaborating Centre for Rabies Surveillance and Research
Institute of Epidemiology, Friedrich-Loeffler-Institute
- Federal Research Institute for Animal Health -
Seestr. 55, D-16868 Wusterhausen, Germany
tel: ..49 33979 80186/158
fax: ..49 33979 80200
email: who-rabies@fli.bund.de

Print: Fine Cards & Papers Limited & Co. KG
Bernhard und Georg Zerbe
Kinzigstraße 18
10247 Berlin
tel: .. 49 30 612 10 85
fax: .. 49 30 618 30 33
email: finecards@t-online.de

ISSN 0257-8506

The Rabies Bulletin Europe is also available online: www.who-rabies-bulletin.org.

Acknowledgements

The Rabies Bulletin Europe is supported by the:

World Health Organization, Geneva
World Organisation for Animal Health (OIE), Paris

Gratefully acknowledged is the financial support of the WHO Collaborating Centre by the

Bundesministerium für Gesundheit and by the Bundesministerium für Ernährung, Landwirtschaft und Verbraucherschutz, Germany

1. Editorial

In this issue we provide a miscellaneous article covering an imported rabies case in Germany. A non-vaccinated puppy was brought in from Bosnia-Herzegovina and succumbed to the disease in southern Germany. This case exemplifies the risk posed by non-vaccinated puppies and again calls for strict border controls. The second article provides a summary of the report "Development of harmonised schemes for monitoring and reporting of rabies in animals in the European Union" as a result of an EFSA call.

As usual, we present the rabies situation in Europe in tables and maps. For more information, see also the online version of the Rabies Bulletin Europe at www.who-rabies-bulletin.org.

Conrad Freuling
Thomas Müller

2. SUMMARY OF RABIES CASES IN EUROPE

RABIES CASES

2nd QUARTER 2010

01.04.10-30.06.10

Name	Code	Total	Wildlife	Domestic animals	Bats	Human
ALBANIA	ALB	0	0	0	0	0
AUSTRIA	AUT	0	0	0	0	0
BELARUS	BLR	168	102	66	0	0
BELGIUM	BEL	0	0	0	0	0
BOSNIA - HERCEGOVINA	BIH	4	3	1	0	0
BULGARIA	BGR	1	0	1	0	0
CROATIA	HRV	148	137	11	0	0
CYPRUS	CYP	0	0	0	0	0
CZECH REPUBLIC	CZH	0	0	0	0	0
DENMARK	DNK	0	0	0	0	0
ESTONIA	EST	0	0	0	0	0
FINLAND	FIN	0	0	0	0	0
FRANCE	FRA	0	0	0	0	0
GERMANY	DEU	0	0	0	0	0
GREECE	GRC	0	0	0	0	0
HUNGARY	HUN	2	1	0	1	0
ICELAND	ISL	0	0	0	0	0
IRELAND	IRE	0	0	0	0	0
ITALY	ITA	67	67	0	0	0
LATVIA	LVA	6	5	1	0	0
LITHUANIA	LTU	8	8	0	0	0
LUXEMBOURG	LUX	0	0	0	0	0
MACEDONIA	MKD	0	0	0	0	0
MALTA	MLT	0	0	0	0	0
MOLDOVA	MDA	68	23	45	0	0
MONTENEGRO	MNE	22	16	6	0	0
NETHERLANDS	NED	3	0	0	3	0
NORWAY	NOR	0	0	0	0	0
POLAND	POL	2	1	1	0	0
PORTUGAL	PRT	0	0	0	0	0
ROMANIA	ROU	107	62	45	0	0
RUSSIAN FEDERATION	RUS	638	303	335	0	0
SERBIA	SRB	19	16	3	0	0
SLOVAK REPUBLIC	SVK	0	0	0	0	0
SLOVENIA	SVN	2	2	0	0	0
SPAIN	ESP	1	0	1	0	0
SWEDEN	SWE	0	0	0	0	0
SWITZERLAND + LIEC.	CHE	0	0	0	0	0
TURKEY	TUR *	*				
UKRAINE	UKR	454	161	293	0	0
UNITED KINGDOM	UNK	0	0	0	0	0
TOTAL		1720	907	809	4	0

Wildlife: excluding bats

* no data

3. Miscellaneous Articles

3. 1 Rabies in Bavaria (Germany) in an imported puppy from Bosnia-Herzegovina

Eismann, A.¹; Ewringmann, T.²; Just, F.²; Müller, T.⁴; Freuling, C.⁴

¹Veterinary authority, Neustadt a. d. Aisch - Bad Windsheim, Germany

²Bavarian Health and Food Safety Authority, Erlangen and Oberschleißheim

⁴National reference laboratory for rabies, Friedrich-Loeffler-Institut, Germany

On March 18th a cross-bred puppy became sick and was taken to the vet practice and was kept there for intensive care. The health situation seemed to improve for a time. However, on the 21st of March the vet humanely euthanized the puppy as it developed hypersensitivity, aggression, increased salivation and paresis. The clinical signs were suggestive for rabies and the responsible veterinary authorities were informed the same day.

The carcass of the animal was brought to the Bavarian Health and Food Safety Authority for post mortem examination; samples were taken for further virological investigation. The histologic lesions consisted in a polioencephalitis with perivascular cuffing of lymphocytes and plasmacells especially in the brain stem and the cerebellum, necrosis of neurons and focal proliferation of glial cells. In some Purkinje cells eosinophilic intracytoplasmic inclusion bodies (Negri bodies) could be demonstrated. Rabies virus antigen and genome were detected in the brain by fluorescent antibody test (FAT) and RT-PCR, respectively. The diagnosis was confirmed at the National Reference Laboratory (NRL) for rabies at the Friedrich-Loeffler-Institute (FLI).

Epidemiological tracing-onward investigations were initiated by the responsible veterinary authority identifying three dogs and two cats

with possible contacts. While all dogs had a sufficient vaccination status the cats were not vaccinated and subsequently humanely euthanized. No further rabid animals associated to this case were found.

Also, the health authority was informed and a press release to the local newspaper was issued. Besides the owner of the puppy and the staff of the veterinary practitioner further people were found with relevant contact to the rabid animal. A total of 17 persons were given adequate anti-rabies prophylaxis.

Tracing back revealed that the dog was born in Bosnia-Herzegovina in December 2009. The puppy was given standard vaccination in February 2010 (without rabies) documented in a pet-passport similar to the EU-pet passport.

On February 27 the mixed-bred puppy Maja was brought from Bosnia-Herzegovina to Germany by car. The owner declared that the dog was visible and that the pet passport was shown at the border control in Slovenia before entering the EU.

As Germany is free from terrestrial rabies (OIE) and rabies is endemic in Bosnia Herzegovina, it was suspected that the infection had occurred there. In fact a possible exposure to rabies may have occurred in January when the puppy was bitten by another dog with increased aggressiveness that was

subsequently euthanized. This was confirmed by sequence analysis at the national reference laboratory for rabies, Friedrich-Loeffler-Institute, revealing 100% sequence identity in the partial N-gene (400 bp) with other sequences from the Western Balkan (Figure 1).

According to Regulation (EC) No 998/2003, requirements for entering the EU with a pet are registration and vaccination of the animals against rabies. Importation of unvaccinated dogs younger than 3 month bears an immanent risk and is therefore subject to further conditions and authorization. Hence, the puppy should not have been allowed to enter the EU.

This case illustrates that proper and efficient border control is an essential component of risk mitigation measures. Also, in areas with a rabies free status, permanent disease awareness is nonetheless necessary to allow early detection and avoid further spread. In this way, veterinary practitioners are at the front line in detecting notifiable animal diseases like rabies. Especially in pets with a history of animal movement from third countries exotic diseases should be taken into consideration at least as a differential diagnosis.

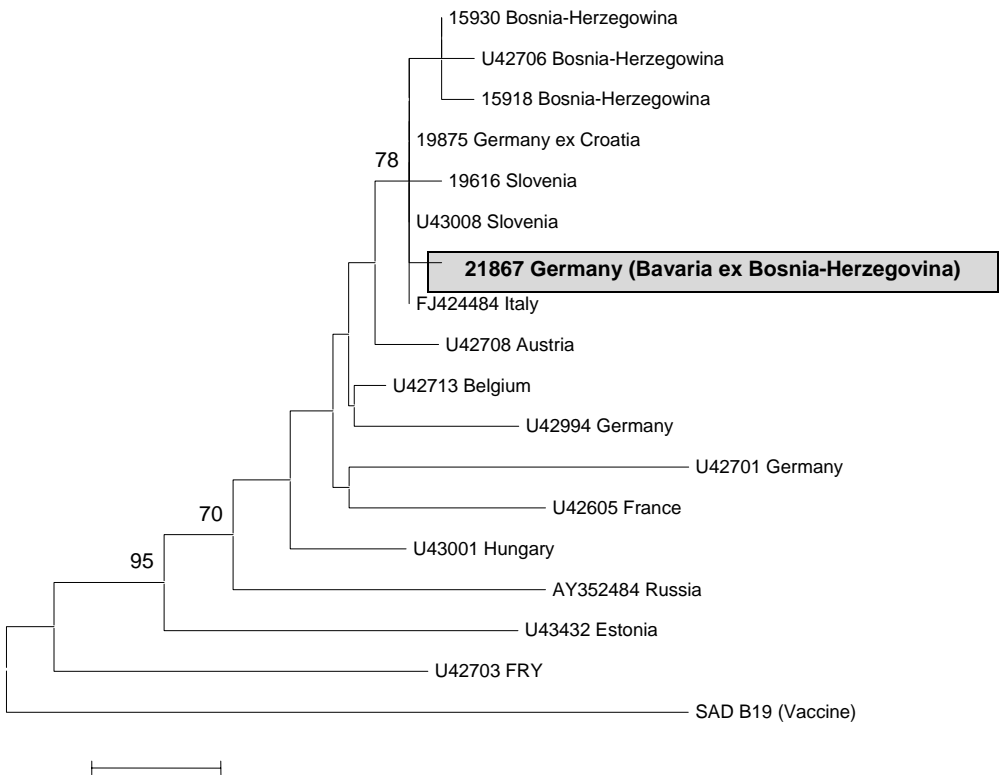


Figure 1 NJ-phylogenetic tree based on partial N-gene sequences indicating the close association of the imported rabies case (21867) to other rabies viruses from the Western Balkan and Italy.

3. 2 Development of harmonised schemes for monitoring and reporting of rabies in animals in the European Union

Cliquet F¹, Freuling C², Smreczak M³, Van der Poel WHM⁴, Horton D⁵, Fooks AR⁵, Robardet E¹, Picard-Meyer E¹, Müller T².

¹Agence nationale de sécurité sanitaire de l'alimentation, de l'environnement et du travail (ANSES), France.

²Friedrich-Loeffler-Institut (FLI), Germany.

³National Veterinary Research Institute (NVRI), Poland.

⁴Central Veterinary Institute WUR, the Netherlands.

⁵Veterinary Laboratories Agency (VLA), the United Kingdom.

In the EU, Directive 2003/99/EC requires Member States (MSs) to collect, evaluate and report data on zoonoses, zoonotic agents, antimicrobial resistance and food-borne outbreaks to the European Commission (EC) on an annual basis and to send their zoonoses report to the EC by 31 May. In practice MSs report the information on zoonotic agents in animals and food through a web-based reporting application run by EFSA. Data are analysed by the European Food Safety Authority (EFSA) and a Community Summary Report (CSR) is prepared by EFSA in close collaboration with the European Centre for Disease Prevention and Control (ECDC) and EFSA's Zoonoses Collaboration Centre. ECDC coordinates the collection of data on zoonoses cases in humans through the Community networks for epidemiological surveillance and control of communicable diseases as established under Decision No 2119/98/EC.

According to Directive 2003/99/EC, the reporting of rabies data is optional depending on the epidemiological situation in the country, which means that MSs should report the information if this zoonotic agent is considered to be of importance in their country. Whereas classical rabies has been virtually eliminated in many Member States (MS) of western Europe

through implementation of oral rabies vaccination programmes, however, rabies is still prevalent in wildlife in several eastern Member States and adjacent non-EU countries, though recently oral vaccination programmes have been implemented or have not even implemented yet. As there were no detailed harmonised rules or recommendations for reporting and monitoring of rabies, the data obtained was often difficult to analyse and interpret at Community level.

Based on a review of the CSRs on zoonoses, zoonotic agents and antimicrobial resistance in the European Union in 2004 and 2005 EFSA's Scientific Panels on Biological Hazards (BIOHAZ) and on Animal Health and Welfare (AHAW) issued two opinions on improving the monitoring and reporting of rabies. The panels emphasised the need for a common strategy on data collection, monitoring and reporting as well as for harmonisation of definitions, in order to improve the usefulness of the data presented in the CSR. As a result, EFSA launched a project with the overall objective to obtain proposals for the development of harmonised monitoring and reporting schemes for rabies in animals under the Directive 2003/99/EC, which shall be applicable in all MSs and in

compliance with relevant Community legislation.

A consortium of five scientific institutions under direction of ANSES, Nancy, thoroughly analysed the situation in the MS and gave recommendations on (i) the animal species, which should be monitored and the study populations, (ii) the stage when sampling should take place, (iii) the sampling strategy (the procedure on how to select the samples) and the sample size (the number of samples to be collected), (iv) the type of specimen to be taken and the sampling techniques to be used, (v) the diagnostic and analytical methods to be used, (vi) the information to be collected at national level and possibly at regional level, and (vii) the information to be reported by considering the public health and animal health needs, the feasibility and cost-effectiveness of the schemes, different MS situations, existing Community legislation as well as the scientific advice of EFSA's scientific panels as well EFSA's guidance documents.

The report states that an adequate system of surveillance should be in place in all countries, whatever the rabies status (rabies-free and infected countries). Surveillance should be evenly distributed in time and space and should target animals suspected of having contracted the disease. All countries should report both positive and negative results of rabies diagnosis. For countries involved in oral rabies vaccination programmes (infected as well as rabies-free countries), the monitoring of rabies vaccination, based on investigating hunted animals from vaccinated areas, should be undertaken for assessing the efficacy of these programmes. The standardisation of diagnostic reference techniques and new confirmatory tests (such as

Polymerase Chain Reaction) used in European Union is recommended. A national bat rabies surveillance network should be established in all European countries based on the testing of sick, rabies-suspect or dead bats of all bat species for lyssavirus infections. The Rabies Bulletin Europe is recommended as the basis for the reporting scheme of animal rabies in Europe with additional information to improve the existing data collection system and monitoring of rabies trends over time. Veterinary authorities should also report cases regularly to the OIE database interface.

The scientific report is available under

<http://www.efsa.europa.eu/en/scdocs/scdoc/67e.htm>.

4 DISTRIBUTION OF RABIES IN EUROPE

4.1 Country summaries of rabies cases, 2nd quarter 2010

01.04.10-30.06.10

Country		Domestic animals								Wildlife											bat	Human cases	total				
Name	Code	dog	cat	cattle	equine	goat sheep	pig	stray dog	other	subtotal	fox	raccoon dog	raccoon	wolf	badger	marten	other mustelids	other carnivores	wild boar	roe deer	red deer	fallow deer	other	subtotal	bat	Human cases	total
Albania	ALB *									0														0			0
Austria	AUT *									0														0			0
Belarus	BLR	27	24	13	2					66	91	5		1		5								102			168
Belgium	BEL *									0														0			0
Bosnia - Hercegovina	BIH	1								1	2			1										3			4
Bulgaria	BGR		1							1														0			1
Croatia	HRV	5	4			2				11	135				2									137			148
Cyprus	CYP *									0														0			0
Czech Republic	CZH *									0														0			0
Denmark	DNK *									0														0			0
Estonia	EST *									0														0			0
Finland	FIN *									0														0			0
France	FRA *									0														0			0
Germany	DEU *									0														0			0
Greece	GRC *									0														0			0
Hungary	HUN									0	1													1	1		2
Iceland	ISL *									0														0			0
Ireland	IRE *									0														0			0
Italy	ITA									0	57			4	1	2				2			1	67			67
Latvia	LVA	1								1	5										2			5			6
Lithuania	LTU									0	2	4				2								8			8
Luxembourg	LUX *									0														0			0
Macedonia	MKD *									0														0			0
Malta	MLT *									0														0			0
Moldova	MDA	15	4	21	1	2	2			45	21					2								23			68
Montenegro	MNE	1		2					3	6	16													16			22
Norway	NOR *									0														0			0
Poland	POL	1								1	1													1			2
Portugal	PRT *									0														0			0
Romania	ROU	12	5	9	4	14	1			45	58			1		1	1				1			62			107
Russian Federation	RUS	149	81	81	2	4	2	14	2	335	254	27		5	1	2	4	1					9	303			638
Serbia	SRB		3							3	15							1						16			19
Slovak Republic	SVK *									0														0			0
Slovenia	SVN									0	2													2			2
Spain	ESP							1		1														0			1
Sweden	SWE *									0														0			0
Switzerland + Lichtenstein	CHE *									0														0			0
The Netherlands	NED									0														0	3		3
Turkey	TUR **									0														0			0
Ukraine	UKR	132	114	40		6	1			293	126	8	5	4	6	8							4	161			454
United Kingdom	UNK *									0														0			0
TOTAL		344	236	166	9	28	6	15	5	809	786	44	5	11	12	20	9	3	0	2	1	0	14	907	4	0	1720
PER CENT		20.0%	13.7%	9.7%	0.5%	1.6%	0.3%	0.9%	0.3%	47.0%	45.7%	2.6%	0.3%	0.6%	0.7%	1.2%	0.5%	0.2%	0.0%	0.1%	0.1%	0.0%	0.8%	52.7%	0.2%	0.0%	100%

* NO CASES

** NO DATA

4.2 Rabies cases per country and administrative units, 2nd quarter 2010

01.04.10-30.06.10

Location	Domestic animals									Wildlife											bat	Human cases	total			
	dog	cat	cattle	equine	goat sheep	pig	stray dog	other	subtotal	fox	raccoon dog	raccoon	wolf	badger	marten	other mustelides	other carnivores	wild boar	roe deer	red deer				fallow deer	other	subtotal
BELARUS																										
Brest	3							3	4					1									5			8
Gomel	13	6	8	2				29	22	1		1		1									25			54
Grodno	2	5	2					9	26					2									28			37
Minsk	5	7	1					13	21														21			34
Mogelev			1					1	11	1													12			13
Vitebsk	4	6	1					11	7	3				1									11			22
TOTAL	27	24	13	2	0	0	0	66	91	5	0	1	0	5	0	0	0	0	0	0	0	0	102	0	0	168
PER CENT	16.1%	14.3%	7.7%	1.2%	0.0%	0.0%	0.0%	39.3%	54.2%	3.0%	0.0%	0.6%	0.0%	3.0%	0.0%	0.0%	0.0%	0.0%	0.0%	0.0%	0.0%	0.0%	60.7%	0.0%	0.0%	100%
BOSNIA - HERCEGOVINA																										
Sarajevo	1							1	2				1										3			4
TOTAL	1	0	0	0	0	0	0	1	2	0	0	0	1	0	0	0	0	0	0	0	0	0	3	0	0	4
PER CENT	25.0%	0.0%	0.0%	0.0%	0.0%	0.0%	0.0%	25.0%	50.0%	0.0%	0.0%	0.0%	25.0%	0.0%	0.0%	0.0%	0.0%	0.0%	0.0%	0.0%	0.0%	0.0%	75.0%	0.0%	0.0%	100%
BULGARIA																										
Ruse		1						1															0			1
TOTAL	0	1	0	0	0	0	0	1	0	0	0	0	0	0	0	0	0	0	0	0	0	0	0	0	0	1
PER CENT	0.0%	100.0%	0.0%	0.0%	0.0%	0.0%	0.0%	100.0%	0.0%	0.0%	0.0%	0.0%	0.0%	0.0%	0.0%	0.0%	0.0%	0.0%	0.0%	0.0%	0.0%	0.0%	0.0%	0.0%	0.0%	100%
HUNGARY																										
Budapest								0															0	1		1
Csongrad								0	1														1			1
TOTAL	0	0	0	0	0	0	0	0	1	0	0	0	0	0	0	0	0	0	0	0	0	0	1	1	0	2
PER CENT	0.0%	0.0%	0.0%	0.0%	0.0%	0.0%	0.0%	0.0%	50.0%	0.0%	0.0%	0.0%	0.0%	0.0%	0.0%	0.0%	0.0%	0.0%	0.0%	0.0%	0.0%	0.0%	50.0%	50.0%	0.0%	100%
ITALY																										
Belluno								0	46				4	1	2				1				55			55
Bolzano-Bozen								0	5														5			5
Pordenone								0	1														1			1
Trento								0	3														3			3
Udine								0	2										1				3			3
TOTAL	0	0	0	0	0	0	0	0	57	0	0	0	4	1	2	0	0	2	0	0	0	1	67	0	0	67
PER CENT	0.0%	0.0%	0.0%	0.0%	0.0%	0.0%	0.0%	0.0%	85.1%	0.0%	0.0%	0.0%	6.0%	1.5%	3.0%	0.0%	0.0%	3.0%	0.0%	0.0%	0.0%	1.5%	100.0%	0.0%	0.0%	100%
SPAIN																										
Mellilla*							1	1															0			1
TOTAL	0	0	0	0	0	0	1	1	0	0	0	0	0	0	0	0	0	0	0	0	0	0	0	0	0	1
PER CENT	0.0%	0.0%	0.0%	0.0%	0.0%	0.0%	100.0%	100.0%	0.0%	0.0%	0.0%	0.0%	0.0%	0.0%	0.0%	0.0%	0.0%	0.0%	0.0%	0.0%	0.0%	0.0%	0.0%	0.0%	0.0%	100%
SLOVENIA																										
Podravska								0	2														2			2
TOTAL	0	0	0	0	0	0	0	0	2	0	0	0	0	0	0	0	0	0	0	0	0	0	2	0	0	2
PER CENT	0.0%	0.0%	0.0%	0.0%	0.0%	0.0%	0.0%	0.0%	100.0%	0.0%	0.0%	0.0%	0.0%	0.0%	0.0%	0.0%	0.0%	0.0%	0.0%	0.0%	0.0%	0.0%	100.0%	0.0%	0.0%	100%

* Spain remains rabies free

4.2 Rabies cases per country and administrative units, 2nd quarter 2010

01.04.10-30.06.10

Location	Domestic animals									Wildlife											bat	Human cases	total			
	dog	cat	cattle	equine	goat sheep	pig	stray dog	other	subtotal	fox	raccoon dog	raccoon	wolf	badger	marten	other mustelides	other carnivores	wild boar	roe deer	red deer				fallow deer	other	subtotal
CROATIA																										
Bjelovarsko - Bilogorska								0	2														2			2
Brodsko - Posavska								0	1														1			1
Istarska		2						2	24					1									25			27
Karlovacka	1	1			1			3	18														18			21
Koprivniško - Krizevska								0	6														6			6
Krapinsko - Zagorska								0	7														7			7
Medimurska								0	1														1			1
Osjesko - Baranjska								0	2														2			2
Pozesko - Slovanska	1							1	8														8			9
Primorsko - Goranska								0	3														3			3
Sibensko - Kninska								0	2														2			2
Sisacko - Moslovska					1			1	18														18			19
Splitsko - Dalmatinska								0	4														4			4
Varazdinska	2							2	6					1									7			9
Viroticko - Podravska								0	1														1			1
Vukovarsko - Srijemska								0	8														8			8
Zadarska								0	2														2			2
Zagreb								0	13														13			13
Zagrebacka	1	1						2	9														9			11
TOTAL	5	4	0	0	2	0	0	0	11	135	0	0	0	0	2	0	0	0	0	0	0	0	137	0	0	148
PER CENT	3.4%	2.7%	0.0%	0.0%	1.4%	0.0%	0.0%	0.0%	7.4%	91.2%	0.0%	0.0%	0.0%	0.0%	1.4%	0.0%	0.0%	0.0%	0.0%	0.0%	0.0%	0.0%	92.6%	0.0%	0.0%	100%
LATVIA																										
Aluksnes r.								0	1														1			1
Cesu r.								0	1														1			1
Dobeles r.								0	1														1			1
Liepajas r.								0	1														1			1
Rīga	1							1															0			1
Tukuma r.								0	1														1			1
TOTAL	1	0	0	0	0	0	0	0	1	5	0	0	0	0	0	0	0	0	0	0	0	0	5	0	0	6
PER CENT	16.7%	0.0%	0.0%	0.0%	0.0%	0.0%	0.0%	0.0%	16.7%	83.3%	0.0%	0.0%	0.0%	0.0%	0.0%	0.0%	0.0%	0.0%	0.0%	0.0%	0.0%	0.0%	83.3%	0.0%	0.0%	100%
LITHUANIA																										
Alytaus								0		1													1			1
Kauno								0	1														1			1
Panevezio								0		1													1			1
Utenos								0	1	2				2									5			5
TOTAL	0	0	0	0	0	0	0	0	0	2	4	0	0	0	2	0	0	0	0	0	0	0	8	0	0	8
PER CENT	0.0%	0.0%	0.0%	0.0%	0.0%	0.0%	0.0%	0.0%	0.0%	25.0%	50.0%	0.0%	0.0%	0.0%	25.0%	0.0%	0.0%	0.0%	0.0%	0.0%	0.0%	0.0%	100.0%	0.0%	0.0%	100%
MONTENEGRO																										
Montenegro	1		2					3	6	16													16			22
TOTAL	1	0	2	0	0	0	0	3	6	16	0	0	0	0	0	0	0	0	0	0	0	0	16	0	0	22
PER CENT	4.5%	0.0%	9.1%	0.0%	0.0%	0.0%	0.0%	13.6%	27.3%	72.7%	0.0%	0.0%	0.0%	0.0%	0.0%	0.0%	0.0%	0.0%	0.0%	0.0%	0.0%	0.0%	72.7%	0.0%	0.0%	100%

4.2 Rabies cases per country and administrative units, 2nd quarter 2010

01.04.10-30.06.10

Location	Domestic animals									Wildlife											bat	Human cases	total			
	dog	cat	cattle	equine	goat sheep	pig	stray dog	other	subtotal	fox	raccoon dog	raccoon	wolf	badger	marten	other mustelides	other carnivores	wild boar	roe deer	red deer				fallow deer	other	subtotal
ROMANIA																										
Alba		1			1				2	1													1			3
Arad	1	1							2	1													1			3
Arges	1								1	1													1			2
Bihor									0			1											1			1
Bistrita-Nasaud									0	1													1			1
Botosani			3						3														0			3
Brasov									0	1													1			1
Buzau	1	1							2	5													5			7
Calarasi	1					1			2														0			2
Cluj									0	3									1				4			4
Covasna	1								1	1													1			2
Dolj		1							1														0			1
Gorj			1	1					2	1													1			3
Harghita	1								1	2													2			3
Hunedoara	3								3	6													6			9
Ialomita									0	1													1			1
Iasi		1	3	3					7	3													3			10
Maramures	1								1	4													4			5
Mures	1								1	1													1			2
Neamt									0	1													1			1
Prahova									0	2						1							3			3
Salaj					13				13	11													11			24
Satu Mare									0	6					1								7			7
Suceava			1						1	3													3			4
Tulcea			1						1														0			1
Valcea	1								1	2													2			3
Vrancea									0	1													1			1
TOTAL	12	5	9	4	14	1	0	0	45	58	0	0	1	0	0	1	1	0	0	1	0	0	62	0	0	107
PER CENT	11,2%	4,7%	8,4%	3,7%	13,1%	0,9%	0,0%	0,0%	42,1%	54,2%	0,0%	0,0%	0,9%	0,0%	0,0%	0,9%	0,9%	0,0%	0,0%	0,9%	0,0%	0,0%	57,9%	0,0%	0,0%	100%
POLAND																										
Lubelskie	1								1	1													1			2
TOTAL	1	0	0	0	0	0	0	0	1	1	0	0	0	0	0	0	0	0	0	0	0	0	1	0	0	2
PER CENT	50,0%	0,0%	0,0%	0,0%	0,0%	0,0%	0,0%	0,0%	50,0%	50,0%	0,0%	0,0%	0,0%	0,0%	0,0%	0,0%	0,0%	0,0%	0,0%	0,0%	0,0%	0,0%	50,0%	0,0%	0,0%	100%
MOLDOVA																										
Moldova	15	4	21	1	2	2			45	21						2							23			68
TOTAL	15	4	21	1	2	2	0	0	45	21	0	0	0	0	0	2	0	0	0	0	0	0	23	0	0	68
PER CENT	22,1%	5,9%	30,9%	1,5%	2,9%	2,9%	0,0%	0,0%	66,2%	30,9%	0,0%	0,0%	0,0%	0,0%	0,0%	2,9%	0,0%	0,0%	0,0%	0,0%	0,0%	0,0%	33,8%	0,0%	0,0%	100%

4.2 Rabies cases per country and administrative units, 2nd quarter 2010

01.04.10-30.06.10

Location	Domestic animals									Wildlife											bat	Human cases	total				
	dog	cat	cattle	equine	goat sheep	pig	stray dog	other	subtotal	fox	raccoon dog	raccoon	wolf	badger	marten	other mustelides	other carnivores	wild boar	roe deer	red deer				fallow deer	other	subtotal	
RUSSIAN FEDERATION																											
Adygeja resp.	3							3															0		3		
Astrahanskaja obl.	9	7	6					24	2	1		1										1	5		29		
Belgorodskaja obl.	24	13	6					43	18														18		61		
Brjanskaja obl.	4	7	6					17	23	4		1			1							3	32		49		
Cecenskaja resp.			1				1	2															0		2		
Cuvaskaja resp.		1	4					5	4														4		9		
Dagestan resp.	1	1	6					8				1											1		9		
Ivanovskaja obl.	4							4	7														7		11		
Jaroslavska obl.		1						1	3														3		4		
Kabardino-Balkanskaja resp.	3		4					7															0		7		
Kaliningradskaja obl.	6	1	1					8	3	2													5		13		
Kalmykja resp.	2	1						3	1														1		4		
Kaluzskaja obl.	3	2	2					7	11	1					2								14		21		
Karacaevo-Cerkesskaja resp.		1	2					3															0		3		
Krasnodarskij kr.	4	1						5	1														1		6		
Kurskaja obl.	1	2	2					5	8														8		13		
Lipecckaja obl.	1	1	1					3	8														8		11		
Marj El resp.	3	1	1		1			6	2														2		8		
Mordovija resp.		1	1		2			4	7														7		11		
Moskovskaja obl.	4	2						6	33	4												3	40		46		
Nizegorodskaja obl.	5	2				1		8	20							1							21		29		
Orlovskaja obl.	2	1	1					4	4														4		8		
Penzenskaja obl.	10	5	1	1				17	18						1								19		36		
Pskovskaja obl.	2	2						4	3	5													8		12		
Rjazanskaja obl.	2		1					3	9														9		12		
Rostovskaja obl.	4	2	4					10	3														3		13		
Saratovskaja obl.	8	4	4		1	1	1	19	9													1	10		29		
Severnaja Oselija-Alanija resp.	6		4					10															0		10		
Smolenskaja obl.	1							1	8	2		1											11		12		
Stavropol'skij kr.		1	11					12	2					1									4		16		
Tambovskaja obl.	4	5	2					11	15														15		26		
Tul'skaja obl.	5	6		1			1	13	6														6		19		
Tverskaja obl.	7							7	5	7													12		19		
Ul'janovskaja obl.	5							5	5				1										6		11		
Vladimirskaja obl.	4	1	2				2	9	5														5		14		
Volgogradskaja obl.	4		4					8	4	1													5		13		
Voronezskaja obl.	8	9	4					30	7						1							1	9		39		
TOTAL	149	81	81	2	4	2	14	2	335	254	27	0	5	1	2	4	1	0	0	0	0	0	9	303	0	0	638
PER CENT	23.4%	12.7%	12.7%	0.3%	0.6%	0.3%	2.2%	0.3%	52.5%	39.8%	4.2%	0.0%	0.8%	0.2%	0.3%	0.6%	0.2%	0.0%	0.0%	0.0%	0.0%	1.4%	47.5%	0.0%	0.0%	100%	

4.2 Rabies cases per country and administrative units, 2nd quarter 2010

01.04.10-30.06.10

Location	Domestic animals									Wildlife											bat	Human cases	total			
	dog	cat	cattle	equine	goat sheep	pig	stray dog	other	subtotal	fox	raccoon dog	raccoon	wolf	badger	marten	other mustelides	other carnivores	wild boar	roe deer	red deer				fallow deer	other	subtotal
UKRAINE																										
Avtonomnaya Respublika Krym	1		1						2	5					1								6			8
Bolynskaja o.		1							1	1													1			2
Cherkasskaja o.	5	7	2		2				16	9													9			25
Chernigovskaja o.	3	20	4			1			28	6	4				3							2	15			43
Chernovitskaja o.	1								1	1													1			2
Dnepropetrovskaja o.	9	11	1		1				22	4													4			26
Donetskaja o.	10	6	3						19	2	1												3			22
Ivano-Frankovskaja o.			1						1														0			1
Kharkovskaja o.	13	10	4						27	3	1												4			31
Khersonskaja o.	14	12	6						32	9		4											4			45
Khmel'nitskaja o.	13	4	3						20	12				2									14			34
Kirovogradskaja o.	10	5	2		1				18	7				1									8			26
Kiyevskaja o.	4	3	2						9	4													4			13
Luganskaja o.		2	1						3				1										2			5
Nikolajevskaja o.	3	7	1		1				12	7	1				1								9			21
Odesskaja o.	2	3	3						8	4			2	1								1	8			16
Poltavskaja o.	2								2														2			2
Rovenskaja o.		1							1	2													2			3
Sumskaja o.	7	4	1		1				13	8			1		1								10			23
Ternopol'skaja o.	1	1							2	1													1			3
Vinnitskaja o.	10	8	2						20	15				2	1								19			39
Zaporozhskaja o.	6	8	1						15	12	1												13			28
Zhitomirskaja o.	18	1	2						21	14		1											15			36
TOTAL	132	114	40	0	6	1	0	0	293	126	8	5	4	6	8	0	0	0	0	0	0	4	161	0	0	454
PER CENT	29.1%	25.1%	8.8%	0.0%	1.3%	0.2%	0.0%	0.0%	64.5%	27.8%	1.8%	1.1%	0.9%	1.3%	1.8%	0.0%	0.0%	0.0%	0.0%	0.0%	0.0%	0.9%	35.5%	0.0%	0.0%	100%
SERBIA																										
Central Serbia		1							1	14													14			15
Voivodina		2							2	1						1							2			4
TOTAL	0	3	0	0	0	0	0	0	3	15	0	0	0	0	0	1	0	0	0	0	0	0	16	0	0	19
PER CENT	0.0%	15.8%	0.0%	0.0%	0.0%	0.0%	0.0%	0.0%	15.8%	78.9%	0.0%	0.0%	0.0%	0.0%	0.0%	5.3%	0.0%	0.0%	0.0%	0.0%	0.0%	0.0%	84.2%	0.0%	0.0%	100%
THE NETHERLANDS																										
Friesland									0														0	1		1
Groningen									0														0	1		1
Zuid-Holland									0														0	1		1
TOTAL	0	0	0	0	0	0	0	0	0	0	0	0	0	0	0	0	0	0	0	0	0	0	3	0	3	
PER CENT	0.0%	0.0%	0.0%	0.0%	0.0%	0.0%	0.0%	0.0%	0.0%	0.0%	0.0%	0.0%	0.0%	0.0%	0.0%	0.0%	0.0%	0.0%	0.0%	0.0%	0.0%	0.0%	100.0%	0.0%	100%	

4.3 Trend tables

4.3.1 Comparison of the reporting quarter (II/2010) with the previous quarter (I/2010)

NAME	Total			Wildlife			Domestic animals			Bats			Human		
	II 2010 (no.)	I 2010 (no.)	Difference	II 2010 (no.)	I 2010 (no.)	Difference	II 2010 (no.)	I 2010 (no.)	Difference	II 2010 (no.)	I 2010 (no.)	Difference	II 2010 (no.)	I 2010 (no.)	Difference
Albania															
Austria															
Belarus	168	209	-41	102	167	-65	66	42	24						
Belgium															
Bosnia - Hercegovina	4	10	-6	3	9	-6	1	1							
Bulgaria	1	4	-3		2	-2	1	2	-1						
Croatia	148	209	-61	137	187	-50	11	22	-11						
Cyprus															
Czech Republic															
Denmark															
Estonia															
Finland															
France															
Germany		2	-2					1	-1		1	-1			
Greece															
Hungary	2	7	-5	1	6	-5		1	-1	1		1			
Iceland															
Ireland															
Italy	67	131	-64	67	122	-55		9	-9						
Latvia	6	7	-1	5	6	-1	1	1							
Lithuania	8	8		8	6	2		2	-2						
Luxembourg															
Macedonia															
Malta															
Moldova	68	*		23	*		45	*			*			*	
Montenegro	22	26		16	23		6	3							
Norway															
Poland	2	9	-7	1	9	-8	1		1						
Portugal															
Romania	107	194	-87	62	162	-100	45	32	13						
Russian Federation	638	776	-138	303	387	-84	335	386	-51					3	-3
Serbia	19	45	-26	16	44	-28	3	1	2						
Slovak Republic															
Slovenia	2	8	-6	2	7	-5		1	-1						
Spain	1		1				1		1						
Sweden															
Switzerland + Lichtenstein															
The Netherlands	3		3							3		3			
Turkey*															
Ukraine	454	588	-134	161	259	-98	293	329	-36						
United Kingdom															
TOTAL	1720	2233	-577	907	1396	-505	809	833	-72	4	1	3	0	3	-3

Wildlife: excluding bats

II/2010 (no.), I/2010 (no.): number of cases

Difference: no. of cases in II/2010 minus cases in I/2010

* no data

4.3.2 Comparison of the reporting quarter (II/2010) with the same quarter of the previous year (II/2009)

NAME	Total			Wildlife			Domestic animals			Bats			Human		
	II 2010 (no.)	II 2009 (no.)	Difference	II 2010 (no.)	II 2009 (no.)	Difference	II 2010 (no.)	II 2009 (no.)	Difference	II 2010 (no.)	II 2009 (no.)	Difference	II 2010 (no.)	II 2009 (no.)	Difference
Albania															
Austria															
Belarus	168	200	-32	102	128	-26	66	72	-6						
Belgium															
Bosnia - Hercegovina	4	5	-1	3	4	-1	1	1							
Bulgaria	1	17	-16		12	-12	1	5	-4						
Croatia	148	122	26	137	112	25	11	10	1						
Cyprus															
Czech Republic															
Denmark		1	-1								1	-1			
Estonia		2	-2		2	-2									
Finland															
France		5	-5					1	-1		4	-4			
Germany															
Greece															
Hungary	2		2	1		1				1		1			
Iceland															
Ireland															
Italy	67	5	62	67	4	63		1	-1						
Latvia	6	21	-15	5	16	-11	1	5	-4						
Lithuania	8	14	-6	8	11	-3		3	-3						
Luxembourg															
Macedonia															
Malta															
Moldova	68	3	65	23		23	45	3	42						
Montenegro	22	18		16	16		6	2							
Norway															
Poland	2	4	-2	1	3	-2	1		1		1	-1			
Portugal															
Romania	107	88	19	62	61	1	45	27	18						
Russian Federation	638	557	81	303	321	-18	335	231	104		1	-1		4	-4
Serbia	19	44	-25	16	30	-14	3	14	-11						
Slovak Republic															
Slovenia	2	7	-5	2	7	-5									
Spain	1	4	-3				1	3	-2		1	-1			
Sweden															
Switzerland + Lichtenstein															
The Netherlands	3	4	-1							3	4	-1			
Turkey*															
Ukraine	454	147	307	161	47	114	293	100	193						
United Kingdom															
TOTAL	1720	1268	448	907	774	133	809	478	327	4	12	-8	0	4	-4

Wildlife: excluding bats

II/2010 (no.), II/2009 (no.): number of cases

Difference: no. of cases in II/2010 minus cases in II/2009

* no data

5. LIST OF CONTRIBUTORS

ALB Albania

Ass. Prof. Dr. Dragush Mati
Ministry of Agriculture and Food
Directorate of Veterinary Service
Tirana /Albania
Tel: +355 4 222 539
Fax: +355 4 222 539
E-mail: vetdirector@albaniaonline.com

AUT Austria

Mag. Ulrich Herzog, CVO
Bundesministerium für Gesundheit und
Frauen
Bereich IV/B (Verbraucher-Gesundheit)
Radetzkystraße 2
A-1030 Wien
Tel. +43-1-7 11 00-4824
Fax +43-1-7 10 41 51
E-mail: ulrich.herzog@bmgf.gv.at

BLR Belarus

Dr. A.M. Axenov
Head of the Central Board of Veterinary
Medicine
Ministry of Agriculture and Food
Kirova 15
Minsk /Belarus
Tel: +375-17-227 6623
Fax: +375-17-227 42 96
+375-17-227 57 54
E-mail: vetinsp@mshp.minsk.by

BEL Belgium

Dr. L. Lengelé, CVO
SPF Santé publique, Sécurité de la
Chaîne alimentaire et Environnement
Place Victor Horta, 40 - b. 10 - 1060
Brussels, Belgium
Tel: +32-2-524 73 00
Fax: +32-2-524 73 49

Dr. Renaud Poizat
AFSCA – Agence fédérale pour la
Sécurité de la Chaîne alimentaire
Direction Généralé de la Politique de
Contrôle
WTC III, boulevard Simon Bolivar, 30,
bureau 19/50
B-1000 Bruxelles/Belgique
Tel. +32-2-208 38 52
Fax +32-2-208 36 12

Responsible expert:
Dr. Ingrid Le Roux
Dr. Steven Van Gucht

Rabies Laboratory, Contagious and
Transmittable Diseases
Rue Engelandstraat 642; 1180 Brussels
Tel: +32(0)2 373 3256
Fax: +32(0)2 373 3286

BIH Bosnia and Herzegovina

Department of Infectious Diseases
Veterinary Faculty Sarajevo
Zmaja od Bosne 90
Sarajevo 71000 /Bosnia and
Herzegovina
Tel: +387-61-160 361
E-mail: vetzar@bih.net.ba

Dr. Sc. Drago N. Nedic
Ministry Agriculture, Forestry and
Water Management of Republika Srpska
Milosa Obilica 51
76300 Bijeljina, Republika Srpska
Bosnia and Herzegovina
Tel: +387-55-401 812,
-211 506
-403 508
Fax: +387-55-403 508
-472 353
E-mail: nedicd@rstel.net
nedicd@vetservice.org
Web: www.vetservice.org

BUL Bulgaria

Dr. Petya Petkova
National Veterinary Service
Animal Health Directorate
15A "Pencho Slaveikov" blvd.
1606 Sofia, Bulgaria
Tel: +359 2 915 98 42
Fax: +359 2 952 38 35

HVR Croatia

Dr. Ljerka Zeba
Veterinary Administration
Ministry of Agriculture and Forestry
Vukovarska 78
10000 Zagreb, Republic of Croatia
Tel: +385 1 6106207
Fax: +385 1 6109207
E-mail: ljerka.zeba@mps.hr

CYP Cyprus

Dr. P. Economides, CVO
Director of Veterinary Services
Ministry of Agriculture, Natural
Resources
and Environment - Veterinary Services -

1417 Nicosia /Cyprus
Tel. +357-2-80 52 0
Fax +357-2-33 28 03
E-mail vet.services@cytanet.com.cy

CZH Czech Republic

MVDr. Josef Vitásek
State Veterinary Administration CR
Slezská 7
CZ – 120 00 Praha 2 / Czech Republic
Tel.: +420 – 227 010 144
Fax : +420 – 227 010 195
E-mail: j.vitasek@svscr.cz

Responsible expert:

MVDr. Ivan Nágl
National Reference Laboratory for Rabies
State Veterinary Institute Prague
Sídlištní 136/24
CZ -165 03 Praha 6 – Lysolaje
Tel. +420 251 031 281
Fax +420 220 920 655
E-mail:i.nagl@svupraha.cz

DNK Denmark

Dr. Jan Mousing, CVO
Ministry for Food, Agriculture and
Fisheries
Danish Veterinary and Food
Administration
Mørkhøj Bygade 19
DK-2860 Søborg
Tel.: +45 33 95 60 00
Fax: +45 33 95 60 01
Email: jam@fvst.dk

Responsible expert:

Dr. Pia Vestergaard
Ministry for Food, Agriculture and
Fisheries
Danish Veterinary and Food
Administration
Mørkhøj Bygade 19
DK-2860 Søborg
Tel.: +45 33 95 65 96
Fax: +45 39 67 52 48
Email: pv@fvst.dk

EST Estonia

Dr. Matti Nautras, CVO
Head of Animal Health Department
Veterinary and Food Broad of Estonia
Väike-Paala-Street 3
11415 Tallinn /Estonia
Tel. +372-605 1732
Fax +372-638 0210
E-mail nautras@vet.agri.ee
Responsible expert:
Dr. Külli Must
Head of Department

Veterinary and Food Laboratory
Kreutzwaldi 30
51006 Tartu /Estonia
Tel: +372-742 1246
Fax: +372-742 1730
E-mail: kylli@vetlab.ee

FIN Finland

Dr. Matti Aho, CVO
Dr. Tiia Tuupanen
Ministry of Agriculture and Forestry
Department of Food and Health, Animal
Health
PO BOX 30
FIN-00023 Government
Finland
Tel: +358-9-16001,
+358-9-1605 2787
Fax: +358-9-1605 4777,
+358-9-1605 3338
E-mail cvo-finland@mmm.fi
tiia.tuupanen@mmm.fi
Web: www.mmm.fi

FRA France

Dr. Florence Cliquet
Agence Francaise de Securite Sanitaire
des Aliments (afssa) - Site de Nancy
Domaine de Pixérécourt
Boite Postale 9
F-54220 Malzéville /Republique
Francaise
Tel: +33-3-83.29.89.50
Fax: +33-3-83.29.89.59
E-mail: f.cliquet@nancy.afssa.fr
Web: www.afssa.fr

DEU Germany

Dr. Karin Schwabenbauer, CVO
Fed. Ministry of Food, Agriculture and
Consumer Protection
PF 14 02 70, D-53103 Bonn, Germany
Tel: +49 228 529 41 57
Fax: +49 228 529 35 53
E-mail: poststelle@bmelv.bund.de

Responsible experts:

Dr. Thomas Müller
Dr. Conrad Freuling
Friedrich-Loeffler-Institute
Federal Research Institute for Animal
Health, WHO Collaborating Centre for
Rabies Surveillance and Research,
Wusterhausen, Seestr. 55
D-16868 Wusterhausen/Germany
Tel: +49-33979-80 0
Fax: +49-33979-80 200 and 222
E-mail: who-rabies@fli.bund.de
Web: www.fli.bund.de

GRC Greece

Dr Olga Mangana
Head of Institute of Infectious and
Parasitice disease
25 Neapoleos street. Agia Paraskevi
15310
Greece
Tel, Fax:+30 210 6011499
viruslab.ath@gmail.com

HUN Hungary

Dr. Tibor Balint
Dr. Zsolt Földi
Ministry of Agriculture and Regional
Development
Animal Health and Food Control
Department
H-1860 Budapest 55. Pf. 1
Tel. +36-1 3014329 and 332 7986
Fax +36-1 301 4669
E-mail foldiz@oai.hu

ISL Iceland

Dr. Halldor Runolfsson
Chief Veterinary Officer
Ministry of Agriculture, Veterinary
Services
Solvholsgata 7
150 Reykjavik /Iceland
Tel. +354-560 9750
Fax +354-552 1160
E-mail halldor.runolfsson@lan.stjr.is

IRE Ireland

Dr. J. Melville
Superintending Veterinary Inspector
Department of Agriculture, Food and
Forestry
Agriculture House
Dublin 2/Ireland
Tel: +353-1-607 2981
Fax: +353-1-661 2440

Responsible expert:

Dr Patrick Lenihan
Senior Superintending Research Officer
Virology Division
Central Veterinary Research Laboratory
Abbotstown, Blanchardstown
Dublin 15

ITA Italy

Dr. Franco Mutinelli
Istituto Zooprofilattico
Sperimentale delle Venezie
Viale dell'Università, 10
I-35020 Legnaro (PD) /Italy
Tel: +39-049-80 84 259
Fax: +39-049-80 84 258

E-mail: fmutinelli@izsvenezie.it

LVA Latvia

Dr. Mareks Samohvalovs
Dr. Emils Jegers
Food and Veterinary Service
Peldu Street 30,
Riga, LV-1050, Latvia
Tel: +371 67095230
Fax: +371 67322727
E-mail: pvd@pvd.gov.lv

LTU Lithuania

Dr. K. Lukauskas
Dr. V. Kiudulas,
Animal Health Department
State Food and Veterinary Service
Siesikų 19, LT-07170 Vilnius
E-mail: vvt@vet.lt
vkiudulas@vet.lt

LUX Luxembourg

Dr. Arthur Besch, CVO
Inspection Vétérinaire
Grand-Duché de Luxembourg
Administration des Services vétérinaires
93, rue d'Anvers
Boîte postale 1403
L-1014 Luxembourg
Tel: +352-478 2539
Fax: +352-407 545
E-mail: Arthur.Besch@asv.etat.lu

MKD Macedonia

Sloboden Cokrevski, DVM
Ministry of Agriculture, Forestry and
Water Economy
Veterinary Directorate
Republic of Macedonia
Leninova 2
1000 Skopje/Macedonia
Tel: + 389 2 3210468
Fax: + 389 2 3210315
E-mail: scokrevski@veterina.gov.mk

Responsible expert:

Prof. Dr. Misho Hristovski
Veterinary institute Skopje
Department of Biology and Pathology of
Fish, Bees and Wild Animals
Lazar Pop Trajkov 5-7
1000 Skopje/Macedonia
Tel: +389 2 3115125
Fax: +389 2 3114619
E-mail: hristovskim@hotmail.com

MNE Montenegro

Mevlida Hrapovic
Veterinary administration of the Republic
of Montenegro

Bulevar Sv.Petra Cetinjskog br 9
81000 Podgorica, Montenegro
Tel: +38 2 81 201 945;
Fax: +38 2 81 201 946
e-mail: mevlida.hrapovic@vu.gov.me

MDA Moldova

Vsevolod Stamati,
Animal Health Division
Department of Veterinary Medicine
Ministry of Agriculture and Food Industry
Republic of Moldova
E-mail: dmv@maia.gov.md

NED Netherlands

Dr. P.W.de Leeuw
Dutch Ministry of Agriculture, Nature and
Food
Bezuidenhoutseweg 73 - P.O. Box 20401
NL-2500 EK's-Gravenhage /Netherlands

Dr. L. Züchner
Food en Consumer Product Safety Authority
De Stoven 22
NL-7206 AX Zutphen /Netherlands
Tel: +31-575-58 8 100
Fax: +31-575-588 8 200
E-mail: lothar.zuchner@vwa.nl

NOR Norway

Dr. Keren Bar-Yaacov, CVO
Norwegian Food Safety Authority, Head
Office
P.O. Box 383
N-2381 Brumunddal, Norway
Tel: +47 23 21 68 00
Fax: +47 23 21 68 01
E-mail: postmottak@mattilsynet.no

POL Poland

Krzysztof Jazdzewski, DVM
Acting Chief Veterinary Officer
General Veterinary Inspectorate
Veterinary Inspection
30, Wspolna Str,
00-930 Warsaw / Poland
Tel.: +4822623208889
+4822626288511
Fax: +48226231408
E-mail: wet@wetgiw.gov.pl

Responsible experts:

Prof. Jan. F. Zmudzinski
National Veterinary Research Institute
Department of Virology
National Reference Laboratory for Rabies
Al. Partyzantow 57
24 -100 Pulawy / Poland
Tel.: +48818863051
Fax: +48818862595

E-mail: jfzmudzi@piwet.pulawy.pl

Magdalena Zietara, DVM
Animal Health and Welfare Office
General Veterinary Inspectorate
Veterinary Inspection
30, Wspolna Str,
00-930 Warsaw / Poland
Tel.: +48226232264
Fax: +48226231408
E-mail:
magdalena.zietara@wetgiw.gov.pl

PRT Portugal

Dr.C.A.M.de Andrade
Fontes
Direccao-Geral da Pecuaria

ROU Romania

Prof. Gabriel Predoi, CVO
General Director of the Sanitary
Veterinary General Direction, National
Sanitary Veterinary and Food Safety
Authority
Bd. Carol I, nr. 24, sector 3
Bucuresti, cod 70.033 /Romania
Tel: +40-21-3157875
Fax: +40-21-3124967
E-mail: predoi@ansv.ro

RUS Russian Federation (European part)

Prof. V.A.Vedernikov
Dr. I.V.Baldina
The Kovalenko All-Russian
Inst.of Exper. Veterinary Medicine
109455, Moscow, Ryazansky prosp., 24
Tel: +495 377-9483
Fax: +495 970-0369
E-Mail: epizootviev@mail.ru

Dr. N.A.Yaremenko
Dr. S.A.Kolomytzev
Department of veterinary and livestock
Ministry of Agriculture
107139, Moscow, Orlikov per., 1/11
Tel: +495 975-5423
Fax: +495 975-5423
E-mail: n.yaremenko@vet.mcx.ru

Responsible expert:

Dr Artem Metlin
Federal Centre for Animal Health,
600901, Vladimir,Russia.
Fax +74 922260753
E-mail artem.metlin@inbox.ru

SRB Serbia

Prof. Dr Dušan Lalošević (Director)
Dr. Nenad Vranješ (Rabies Epidemiology
and prevention)
Dr. Srđan Stankov (Rabies laboratory)
Pasteur Institute Novi Sad
Hajduk Veljkova 1 / P.O. Box 208
21000 Novi Sad / Serbia

Tel.: +381 21 6611 003
+381 21 420 528
Fax: +381 21 6611 003
Email: paster-ns@neobee.net

SVK Slovak Republic

Prof. Josef Bires, CVO
Roman Matejcik, DVM
State Veterinary Administration of the
Slovak Republic
Botanická No 17
842 13 Bratislava /Slovak Republic
Tel. +421-2-60 257 227
Fax +421-2-65 411 159
E-mail welfare@svsrs.sk

Responsible expert:
Miroslav Mojziš, DVM
Štátny veterinárny ústav Zvolen
Pod Dráhami No. 918
960 86 Zvolen /Slovak Republic

SVN Slovenia

Aleš Breclj, MSc, DVM
Ministry of Agriculture, Forestry and
Food
Veterinary Administration of the Republic
of Slovenia
Parmova 53, 1000 Ljubljana / SLOVENIA
Tel: +386-1-300 13 00
Fax: +386-1-300 13 56
E-mail: ales.breclj@gov.si
Web: www.sigov.si/vurs

Responsible expert:
Peter Hostnik, PhD, DVM
National Veterinary Institute, Unit for the
diagnostic of contagious and other
diseases,
Laboratory of Virology
Gerbičeva 60
1000 Ljubljana / SLOVENIA
Tel: +386-1-477 91 00
Fax: +386-1-477 93 52
E-mail: peter.hostnik@vf.uni-lj.si

ESP Spain

Ilmo. Sr. D. Pedro Angel García González
Subdirector General de Sanidad Exterior
Tel: +34-91-596 20 38
Fax: +34-91-596 20 47

E-mail: pgarciag@msc.es
Sr. D. Carlos Abellán García
Jefe de Servicio de Veterinaria Oficial
Tel: +34-91-596 19 34
Fax: +34-91-596 20 47
E-mail: cabellan@msc.es

Ministerio de Sanidad y Consumo
Dirección General de Salud Pública
Subdirección General de Sanidad
Exterior
C/Paseo del Prado, 18-20
E-28071 Madrid

Responsible expert - Diagnóstico:
Sr. D. Juan E. Echevarría Mayo
Servicio de Microbiología Diagnóstica
Centro Nacional de Microbiología
Instituto de Salud Carlos III
Ministerio de Sanidad y Consumo
Ctra. Majadahonda-Pozuelo s/n
28220 Majadahonda, Madrid
Tel: +34-91-509 79 01
Fax: +34-91-509 79 66
E-mail: jeecheva@isciii.es

Epidemiología:
Sra. Da Luisa Pilar Sánchez Serrano
Centro Nacional de Epidemiología
Instituto de Salud Carlos III
Ministerio de Sanidad y Consumo
C/ Sinesio Delgado, 6
E-28029 Madrid
Tel: +34-91-387 78 02
Fax: +34-91-387 78 16
E-mail: Isanchez@isciii.es

Dr. Ignacio Sanchez Esteban
Subdirector General de Sanidad
Veterinaria
MAPA
Ministerio de Agricultura, Pesca y
Alimentacion
Madrid /Spain
Tel: +34-91-347 82 95
Fax: +34-91-347 82 99
E-mail: isanchez@mapya.es
Web: www.mapya.es

Responsible expert:
D. Fulgencio Garrido Abellan
Tel: +34-958-44 03 75
Fax: +34-958-44 12 00
E-mail: fgarrido@moebius.es

Dña. Teresa Rodríguez-Trenchs
Tel: +34-91-347 83 4
Fax: +34-91-347 82 99
E-mail: trodrigu@mapya.es

SWE Sweden

Dr. Leif Denneberg
National Board of
Agriculture Department for Animal
Production and Health
SE-551 82 Jönköping /Sweden
Tel: +46-36-15 50 00
Fax: +46-36-30 81 82
E-mail: leif.denneberg@sjv.se

Responsible expert:

Professor Anders Engvall
National Veterinary Institute
SE-751 89 Uppsala
Tel: +46-18-67 40 00
Fax: +46-18-67 44 45
E-mail: anders.engvall@sva.se

CHE Switzerland

PD Reto Zanoni
Dr. Urs Breitenmoser
University of Bern - Swiss Rabies Centre
Institute of Veterinary Virology
Länggass Str. 122
CH-3012 Bern /Switzerland
Tel: +41-31-631 23 78
Fax: +41-31-631 25 34
E-Mail: zanoni@ivv.unibe.ch
breitenmoser@ivv.unibe.ch
Web: www.cx.unibe.ch/ivv

TUR Turkey

Asso.Prof.Dr. Muzaffer AYDEMİR
Ministry of Agriculture and Rural Affairs
General Directorate of Protection and
Control
Esat cad. No. 3
06100 Bakanlıklar, Ankara /Turkey
Tel: +90-312-41 82 436
Fax: +90-312-41 78 209

Responsible expert:

Dr. Orhan Aylan, Chief of Rabies
Laboratory
Etlik Central Veterinary Control and
Research Institute
06020 Etlik, Ankara /Turkey
Tel: +90-312-32 60 090 / 154
Fax: +90-312-32 11 755

UKR Ukraine

Dr. P. Verbytskyi
Ministry of Agrarian Policy
State Department of Veterinary Medicine
Khreshchatik 24
01001 Kiev /Ukraine
Tel: +380-44-229 12 70
Fax: +380-44-229 85 45
E-mail: uzpr@minap.kiev.ua

Dr. Liudmyla Grishok
Institute of Veterinary Medicine
Head of Laboratory for Rabies
Donetskaja Street 30
Kiev-151 /Ukraine
Tel: +380-44-243 72 38
Fax: +380-44-242-69-81
E-mail: ivm-kiev@akcecc.kiev.ua

Dr. Zoya Trotsenko
Head of Virology Department
State Research Institute of Laboratory
Diagnostics and Veterinary Sanitary
Expertise
Donetskaya Street 30
Kiev-151, Ukraine
Tel: +380-44-243 37 55
Fax: +380-44-242-37 55
E-Mail: biotech@astral.kiev.ua

UNK United Kingdom

Mr Nigel Gibbens BVetMed MSc MRCVS,
CVO
Mr David Mouat BVM&S MSc MRCVS
Mr Balazs Toth DrMedVet MRCVS
Department for Environment, Food and
Rural Affairs
Area 5D Nobel House
17 Smith Square, London SW1P 3JR
Tel: +44-207-238 6047
Fax: +44-207-238 5051
e-mail david.c.mouat@defra.gsi.gov.uk
balazs.toth@defra.gsi.gov.uk

Responsible expert:

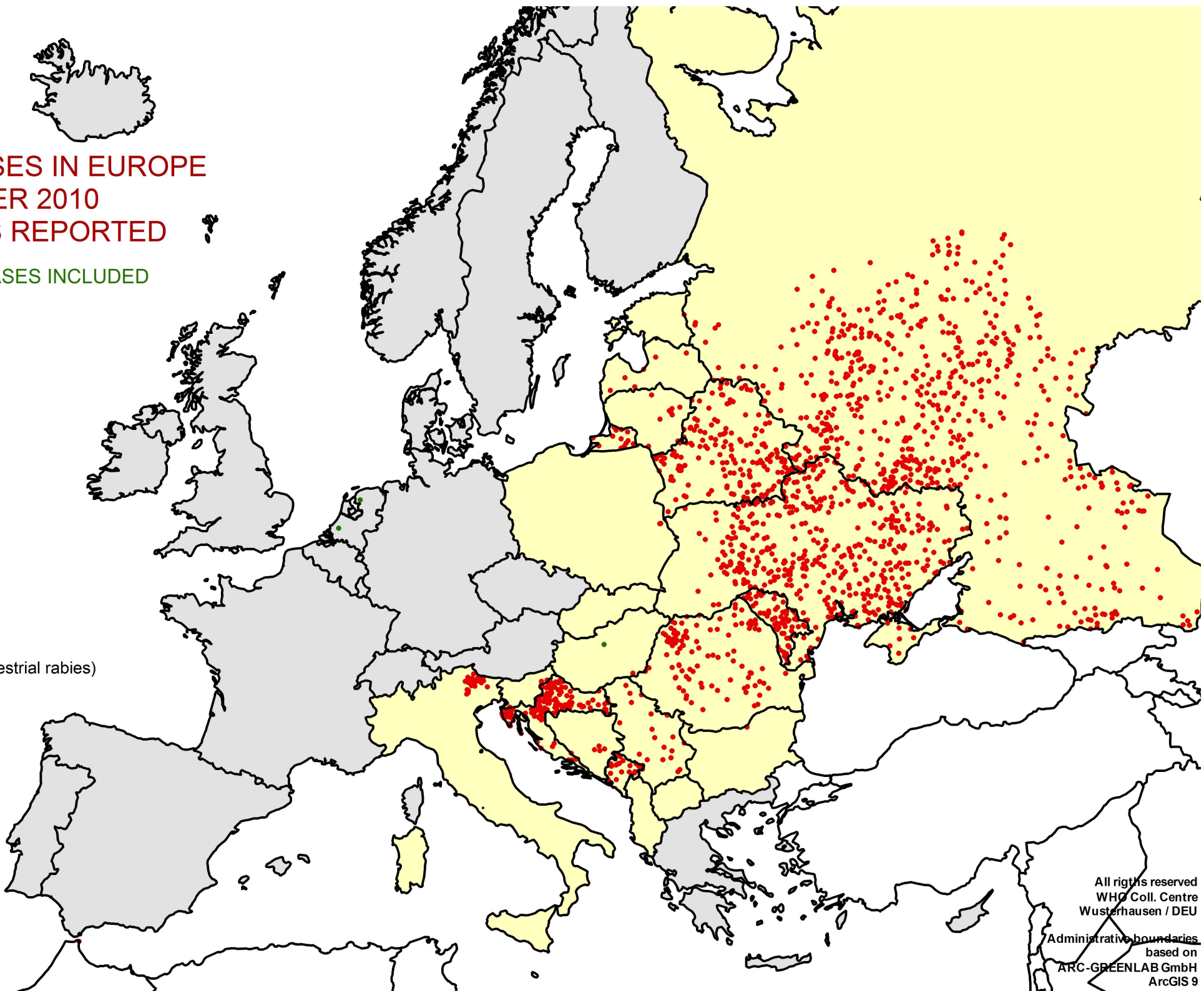
Prof. Anthony R. Fooks
Rabies Research and Diagnostic Group,
WHO Collaborating Centre, Department
of Virology, Veterinary Laboratories
Agency (Weybridge), New Haw,
Addlestone, Surrey, KT15 3NB, UK
Tel: +44 1932-357840
Fax: +44 1932-357239
E-Mail: t.fooks@vla.defra.gsi.gov.uk

Please inform the editor about changes
of contact details!

RABIES CASES IN EUROPE
2nd QUARTER 2010
1720 CASES REPORTED

4 BAT RABIES CASES INCLUDED

rabies free (terrestrial rabies)
no data



All rights reserved
WHO Coll. Centre
Wusterhausen / DEU

Administrative boundaries
based on
ARC-GREENLAB GmbH
ArcGIS 9