

# WHO RABIES BULLETIN EUROPE

INFORMATION  
SURVEILLANCE  
RESEARCH



**WHO Collaborating Centre for Rabies Surveillance and Research**

FRIEDRICH-LOEFFLER-INSTITUT

**FLI**

Bundesforschungsinstitut für Tiergesundheit  
Federal Research Institute for Animal Health

Principal Editor: Dr. Conrad Freuling  
Associated Editor: Dr. Thomas Müller  
Technical Support: Anke Kliemt  
Heike Kubitzka  
Contact: WHO Collaborating Centre for Rabies Surveillance and  
Research  
Institute of Epidemiology, Friedrich-Loeffler-Institute  
- Federal Research Institute for Animal Health -  
Seestr. 55, D-16868 Wusterhausen, Germany  
tel: ..49 33979 80186/158  
fax: ..49 33979 80200  
email: who-rabies@fli.bund.de  
Print: Fine Cards & Papers Limited & Co. KG  
Bernhard und Georg Zerbe  
Kinzigstraße 18  
10247 Berlin  
tel: .. 49 30 612 10 85  
fax: .. 49 30 618 30 33  
email: finecards@t-online.de  
ISSN 0257-8506

The Rabies Bulletin Europe is also available online: [www.who-rabies-bulletin.org](http://www.who-rabies-bulletin.org).

### **Acknowledgements**

The Rabies Bulletin Europe is supported by the:

World Health Organization, Geneva  
World Organisation for Animal Health (OIE), Paris

Gratefully acknowledged is the financial support of the WHO Collaborating Centre by the

Bundesministerium für Gesundheit and by the Bundesministerium für Ernährung, Landwirtschaft und Verbraucherschutz, Germany

# **RABIES BULLETIN EUROPE**

---

**Volume 33      No 4      Quarter 4      2009**

**Published May 2010**

---

## **CONTENTS**

<b>1</b>	<b>Editorial</b>	<b>3</b>
<b>2</b>	<b>Summary of rabies cases in Europe</b>	<b>4</b>
<b>3</b>	<b>Miscellaneous Article</b>	
<b>3.1</b>	<b>A fatal case of bat lyssavirus infection in Primorye Territory of the Russian Far East</b>	<b>5</b>
<b>3.2</b>	<b>WHO Rabies Bulletin Europe - website updated</b>	<b>8</b>
<b>4</b>	<b>Distribution of rabies in Europe</b>	
<b>4.1</b>	<b>Country summaries of rabies cases, 4th quarter 2009</b>	<b>9</b>
<b>4.2</b>	<b>Country summaries of rabies cases, 2009 total</b>	<b>10</b>
<b>4.3</b>	<b>Rabies cases per country and administrative units, 4th quarter 2009</b>	<b>11</b>
<b>4.4</b>	<b>Summary of animals tested for rabies in Europe (total 2009)</b>	<b>17</b>
<b>4.5</b>	<b>Trend tables</b>	
<b>4.5.1</b>	<b>Comparison of the reporting quarter (IV/2009) with the previous quarter (III/2009)</b>	<b>18</b>
<b>4.5.2</b>	<b>Comparison of the reporting quarter (IV/2009) with the same quarter of the previous year (IV/2008)</b>	<b>19</b>
<b>4.5.3</b>	<b>Comparison of the reporting year (2009) with the previous year (2008)</b>	<b>20</b>
<b>5</b>	<b>List of contributors</b>	<b>21</b>
	<b>Map of rabies cases in Europe, 4th quarter 2009</b>	
	<b>Map of Oral Immunisation of Foxes (OIF) Programmes (total area covered in 2009)</b>	

# 1. Editorial

---

The last issue for 2009 provides information on rabies surveillance from most European countries. In 2009, a total of 6697 animal rabies cases and eleven human cases were reported from European countries. Unfortunately, for Turkey only data for the first quarter is available. We are hoping that the technical difficulties will soon be resolved and we will update the database retrospectively once the data are available.

The global decreasing trend as compared to previous years can be observed especially in those countries that successfully implement oral rabies vaccination of foxes. However, in 2009 in Italy despite control efforts, the fox epidemic spread further westward. The Italian authorities reacted by drastically enlarging the oral vaccination area. At the end of 2009 and beginning of 2010 an emergency vaccination was undertaken with the aim to stop further spread. It is anticipated that control efforts will halt the spread and eventually eliminate rabies in Italy.

The miscellaneous article was provided by the Russian colleagues in the Far East describing a clinical human rabies case after a bat bite. The causative agent was found to be closely related to the Irkut lyssavirus species (IRKV). This is the first record of a bat associated human rabies case in Asia, and it exemplifies that bats should be regarded a potential transmitter of rabies in any region of the world. A special thank to Ivan Kuzmin (CDC) for providing first information on this case and helping to establish contacts.

Conrad Freuling  
Thomas Müller

## 2. SUMMARY OF RABIES CASES IN EUROPE

RABIES CASES

4th QUARTER 2009

01.10.09-31.12.09

Name	Code	Total	Wildlife	Domestic animals	Bats	Human
ALBANIA	ALB	1	0	1	0	0
AUSTRIA	AUT	0	0	0	0	0
BELARUS	BLR	246	163	83	0	0
BELGIUM	BEL	0	0	0	0	0
BOSNIA - HERCEGOVINA	BIH	1	0	1	0	0
BULGARIA	BGR	7	7	0	0	0
CROATIA	HRV	205	183	22	0	0
CYPRUS	CYP	0	0	0	0	0
CZECH REPUBLIC	CZH	0	0	0	0	0
DENMARK	DNK	0	0	0	0	0
ESTONIA	EST	0	0	0	0	0
FINLAND	FIN	0	0	0	0	0
FRANCE	FRA	2	0	0	2	0
GERMANY	DEU	2	0	0	2	0
GREECE	GRC	0	0	0	0	0
HUNGARY	HUN	1	1	0	0	0
ICELAND	ISL	0	0	0	0	0
IRELAND	IRE	0	0	0	0	0
ITALY	ITA	47	44	3	0	0
LATVIA	LVA	14	13	1	0	0
LITHUANIA	LTU	15	11	4	0	0
LUXEMBOURG	LUX	0	0	0	0	0
MACEDONIA	MKD	0	0	0	0	0
MALTA	MLT	0	0	0	0	0
MOLDOVA	MDA	27	8	19	0	0
MONTENEGRO	MNE	13	10	3	0	0
NETHERLANDS	NED	0	0	0	0	0
NORWAY	NOR	0	0	0	0	0
POLAND	POL	0	0	0	0	0
PORTUGAL	PRT	0	0	0	0	0
ROMANIA	ROU	144	119	25	0	0
RUSSIAN FEDERATION	RUS	836	395	435	0	6
SERBIA	SRB	44	34	10	0	0
SLOVAK REPUBLIC	SVK	0	0	0	0	0
SLOVENIA	SVN	12	12	0	0	0
SPAIN	ESP	0	0	0	0	0
SWEDEN	SWE	0	0	0	0	0
SWITZERLAND + LIEC.	CHE	0	0	0	0	0
TURKEY	TUR	*				
UKRAINE	UKR	660	288	372	0	0
UNITED KINGDOM	UNK	0	0	0	0	0
TOTAL		2277	1288	979	4	6

Wildlife: excluding bats

\* no data

## 3. Miscellaneous Articles

---

### 3. 1 A fatal case of bat lyssavirus infection in Primorye Territory of the Russian Far East

Leonova G.N.<sup>1</sup>, Belikov S.I.<sup>2</sup>, Kondratov I.G.<sup>2</sup>, Krylova N.V.<sup>1</sup>, Pavlenko E.V.<sup>1</sup>, Romanova E.V.<sup>2</sup>, Chentsova I.V.<sup>3</sup>, Petukhova S.A.<sup>3</sup>

<sup>1</sup> *Institute of Epidemiology and Microbiology, Siberian Branch of the Russian Academy of Medical Sciences, Vladivostok, Russia*

<sup>2</sup> *Limnological Institute, Siberian Branch of the Russian Academy of Sciences, Irkutsk, Russia*

<sup>3</sup> *The Primorye Clinical Hospital №1, Vladivostok, Russia*

In the Old World lyssavirus infections in bats are reported only sporadically and human rabies cases of bat origin are even rarer. In Europe, confirmed human rabies cases following bat bites were reported in the Ukraine, Russia, Finland, the Netherlands and the United Kingdom (Johnson et al., 2010). The indigenous cases are associated with European bat lyssavirus type 1 (EBLV-1) and 2 (Fooks et al., 2003). Although the risk of bat lyssavirus infection in humans seems low; single cases are of special interest and highlight the need for adequate preventive measures. In 2007, a case of a fatal bat lyssavirus infection in human occurred in Primorye Territory (the Russian Far East). The given report describes this rare case.

The patient was a twenty-year-old girl named Zh. who was a resident of Ozernoye village (Yaroslavsky Region, Primorye Territory). She got an acute disease on September 10, 2007 (medical record № 11063). The epidemiological anamnesis contained two facts to be paid attention to. Firstly, on July 12 – 13, 2007 the patient was bitten by a tick into lumbar region, while being in forest zone of Yaroslavsky Region. Prior to this, she had been vaccinated against tick-borne encephalitis (TBE) and had routine

revaccinations. Secondly, on August 10, 2007 the girl was bitten in the lip by a bat of unknown species which had entered into the house in Ozernoe. The bat bite caused two thin parallel slightly bleeding stripes which healed in a short period of time. During one month the girl's mother, who was a health-care worker, did not notice any inflammatory infiltration in the wound or increase of regional lymph nodes. The girl felt well and did not have any complaints. She was not vaccinated against rabies. One month later (on September 10, 2007) the girl got an acute disease with body temperature rising up to 38°C, intensive headache, repeated vomiting, diplopia, head and hand tremor. On September 11, 2007 she was hospitalized to infectious disease ward of Ussuriysk hospital. The patient's health status worsened: the general brain symptomatology (constricting diffuse headache and multiple vomiting without any relief) and toxic syndrome increased (the body temperature reached 38.6°); photophobia occurred. The bulbar disturbances (choking when swallowing, baryphonia [difficulty of speech]) increased; profuse discharge of phlegm from the upper respiratory tract was noticed;

meningeal symptoms and depression of consciousness (soporific state) occurred. On September 13, 2007, the patient was taken into the Primorye Clinical Hospital No. 1 of Vladivostok with a diagnosis of meningoencephalitis. On her arrival at hospital the patient was in deep sopor. Kernig's sign was not observed. Pupils with the diameter of 3 mm were sluggish in respond to the light, D<S. The diagnosis set was infectious (virus) meningoencephalitis of unknown origin, an acute stage with a severe course attended by deep flaccid paresis and bulbar syndrome.

On September 14, 2007, the patient was examined by a neurologist who indicated poor general state and depressed consciousness up to the level of superficial coma. The skin of arms, legs and upper shoulder girdle was covered with punctulated hemorrhagic rash (D=1-1,5 mm). There was Kernig's sign of 160° - 170° on both sides. Pupils were mydriatic, D=S; pupillary reactions were lively. Amyotonia of limbs was observed. Deep reflexes were very weak, D=S; pathological reflexes were not recorded. An assumption of rhabdovirus infection was made upon epidemiological anamnesis, presence of hemorrhagic rash on the skin, ecchymoses at sites of injection, bloody vaginal discharges, hypersalivation, and neurologic symptomatology, as well as lack of vaccination against rabies. Despite the intensive therapy (antibacterial, antiviral, neurometabolic, symptomatic, and artificial lung ventilation (ALV) via bronchostomy) the patient was getting worse every day due to the increase of general brain symptoms coupled with multiple organ failure, bilateral hypostatic pneumonia, arterial blood pressure (ABP) fall up to 60/40 mm Hg, and apparent tachycardia of 140 - 160 beats per minute. On the

eleventh day the disease resulted in fatal outcome.

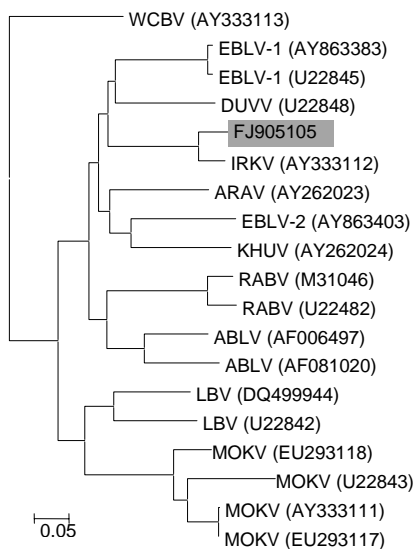
Pathologic-anatomical diagnosis was an acute stage of meningoencephalitis as an underlying disease with complications of edema, swelling and dislocation of brain, as well as bilateral hypostatic pneumonia and parenchymatous degeneration of myocardium, liver and kidney.

The brain specimens taken post-mortem were used to prepare a 10% suspension, with which the two-day-old noninbred white mice were infected. All mice started to show clinical signs on the seventh day; and after infection with re-isolated material they fell ill on the sixth day (physical inactivity and respiratory impairment were observed). With the first passage the incubation period shortened to 5 - 6 days. The isolated virus was named after the village Ozernoe and is now kept in the virus archive.

The patient's blood serum of September 14, 2007 (the fourth day from the beginning of disease) was studied with enzyme immunoassay (EIA), and IgM-class antibodies to TBE virus were not found. IgG-class antibodies to TBE virus were found in titre 1:800, and were identified as response to prior vaccination. The antibodies to a homologous antigen prepared to the Ozernoe virus were found in titre 1:20 with hemagglutination-inhibition reaction, as well as in titre 1:40 using enhancement fluoroimmunoassay.

The suspicion of rhabdovirus infection was supported by the fact that antibodies isolated from a woman who was bitten by a dog and vaccinated three times against rabies cross-neutralized the Ozernoe virus with a titre of 1:160. Virus identification by RT-PCR and subsequent sequencing was undertaken as described before (Heaton et al, 1997). An amplicon

of the expected length was obtained using PCR with the primers ATGTAACACCCCTACAATGG and CAATTTGCACACATTTTGTG. The nucleotide sequence was the closest to the bat lyssavirus species Irkut virus (IRKV) with 95% identity. IRKV had been isolated earlier from a dead Greater Tubenosed Bat *Murina leucogaster* in Irkutsk (Botvinkin et al., 2003). A set of primers was synthesized to amplify overlapping fragments of the virus genome, and the sequence of complete genome was identified (Accession FJ905105). The full genome of Ozernoe virus is 91 % identical to the Irkut virus genome, and 77% to the EBLV-1 complete genome. Phylogenetic analysis of complete-genome nucleotide sequences on all lyssavirus species showed that the Irkut and Ozernoe strains are located on the same branch and have a common ancestor.



**Fig 1: NJ phylogenetic tree based on N-gene sequences of lyssavirus representatives**

Conclusively, the medical case of bat lyssavirus infection resulting in a

lethal outcome was for the first time described on the territory of Siberian and Far-Eastern Region. Despite the bite wound on the lip the patient was not given post exposure prophylaxis. Representatives of the health care service in the Primorye Territory were not aware that an accidental contact of a human with a bat would cause a clinical picture typical for rabies. Cases of bats entering into houses and non-residential premises are not rare and therefore pose a risk to human health. Thus preventive measures analogous to those used after other wild animal bites should be implemented. There are 15 known species of chiropterans in the Far East, including *Murina leucogaster*. Most of them are referred to nonmigratory species; they hibernate in caves near summer habitats forming large assemblages. Some bat species from southern regions of Primorye Territory even spend winters in the balks giving possibility to further spread. Here, we have shown a real possibility of a lethal bat lyssavirus infection in a human who was accidentally bitten by a chiropteran. This is the first confirmed human rabies case of bat lyssavirus infection on the territory of the Asian continent.

#### References

- 1) Botvinkin, A. D., Poleschuk, E. M., Kuzmin, I. V., Borisova, T. I., Gazaryan, S. V., Yager, P. & Rupprecht, C. E. (2003). Novel lyssaviruses isolated from bats in Russia. *Emerging Infectious Diseases* 9, 1623-1625.
- 2) Fooks, A. R., Brookes, S. M., Johnson, N., McElhinney, L. M. & Hutson, A. M. (2003). European bat lyssaviruses: an emerging zoonosis. *Epidemiology and Infection* 131, 1029-1039.



3) Heaton, P. R., Johnstone, P., McElhinney, L. M., Cowley, R., O'Sullivan, E. & Whitby, J. E. (1997). Heminested PCR assay for detection of six genotypes of rabies and rabies-related viruses. *J Clin Microbiol* 35, 2762-2766.

4) Johnson, N., Vos, A., Freuling, C., Tordo, N., Fooks, A. R. & Müller, T. (2010). Human rabies due to lyssavirus infection of bat origin. *Vet Microbiol.* epub ahead of print (10.1016/j.vetmic.2010.02.001)

### 3. 2 WHO Rabies Bulletin Europe - website updated

Editorial team of the WHO CC,

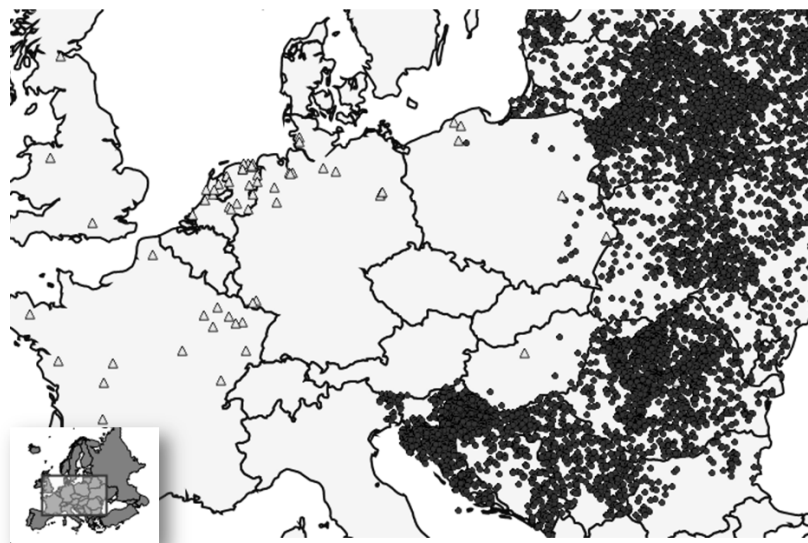
Friedrich-Loeffler-Institute, Wusterhausen

Starting with this quarter the WHO RBE website was restructured to offer more features to rabies experts and to the general public. Besides changes in the design of the front page, the most important change was made in the mapping tool. Here, it is now possible to display various layers of rabies data within one map. Also, a zoom-in feature allows the detailed view especially on border areas.

To increase the accuracy of data transfer to the RBE the

reporting of rabies data can now be done online. People responsible for reporting can log-in to a new members area for submission of data. The final dataset can be exported for internal documentation or for other reporting duties. To initiate online-reporting each country will be directly contacted by the editorial team.

In any case, feedback on the usability is warmly welcome.



**Fig. 2: Map of rabies cases in Europe (2009) as displayed using the new mapping tool. Rabies in bats (triangles) and in other animals (dots) can be visualized.**

## 4 DISTRIBUTION OF RABIES IN EUROPE

### 4.1 Country summaries of rabies cases, 4th quarter 2009

01.10.09-31.12.09

Country		Domestic animals									Wildlife											bat	Human cases	total			
		dog	cat	cattle	equine	goat	sheep	pig	stray dog	other	subtotal	fox	raccoon dog	raccoon	wolf	badger	marten	other mustelides	other carnivores	wild boar	roe deer				red deer	fallow deer	other
Name	Code																										
Albania	ALB			1						1															0		1
Austria	AUT *									0															0		0
Belarus	BLR	31	29	19	4					83	140	20		1		2									163		246
Belgium	BEL *									0															0		0
Bosnia - Hercegovina	BIH			1						1															0		1
Bulgaria	BGR									0	7														7		7
Croatia	HRV	8	7	1		6				22	178			1		1				2			1	183		205	
Cyprus	CYP *									0														0		0	
Czech Republic	CZH *									0															0		0
Denmark	DNK *									0															0		0
Estonia	EST *									0															0		0
Finland	FIN *									0															0		0
France	FRA									0															0	2	2
Germany	DEU									0															0	2	2
Greece	GRC *									0															0		0
Hungary	HUN									0	1														1		1
Iceland	ISL *									0															0		0
Ireland	IRE *									0															0		0
Italy	ITA	2							1	3	43				1									44		47	
Latvia	LVA	1								1	6	5												13		14	
Lithuania	LTU			4						4	2	8		1	2									11		15	
Luxembourg	LUX *									0														0		0	
Macedonia	MKD *									0														0		0	
Malta	MLT *									0														0		0	
Moldova	MDA	3	3	13						19	8													8		27	
Montenegro	MNE	1		1		1				3	10													10		13	
Norway	NOR *									0														0		0	
Poland	POL *									0														0		0	
Portugal	PRT *									0														0		0	
Romania	ROU	13	5	7						25	114			1	1	1			1				1	119		144	
Russian Federation	RUS	148	138	121	1	20	3	4		435	320	61		2	2	1	1		1	1		1	5	395	6	836	
Serbia	SRB	2	8							10	31							2				1		34		44	
Slovak Republic	SVK *									0														0		0	
Slovenia	SVN									0	12													12		12	
Spain	ESP *									0														0		0	
Sweden	SWE *									0														0		0	
Switzerland + Lichtenstein	CHE *									0														0		0	
The Netherlands	NED *									0														0		0	
Turkey	TUR **									0														0		0	
Ukraine	UKR	94	184	88	2	4				372	259	12	2	3	2	6							4	288		660	
United Kingdom	UNK *									0														0		0	
<b>TOTAL</b>		<b>303</b>	<b>374</b>	<b>256</b>	<b>7</b>	<b>31</b>	<b>3</b>	<b>4</b>	<b>1</b>	<b>979</b>	<b>1131</b>	<b>106</b>	<b>2</b>	<b>8</b>	<b>9</b>	<b>10</b>	<b>2</b>	<b>2</b>	<b>2</b>	<b>3</b>	<b>1</b>	<b>11</b>	<b>1288</b>	<b>4</b>	<b>6</b>	<b>2277</b>	
<b>PER CENT</b>		<b>13.3%</b>	<b>16.4%</b>	<b>11.2%</b>	<b>0.3%</b>	<b>1.4%</b>	<b>0.1%</b>	<b>0.2%</b>	<b>0.0%</b>	<b>43.0%</b>	<b>49.7%</b>	<b>4.7%</b>	<b>0.1%</b>	<b>0.4%</b>	<b>0.4%</b>	<b>0.4%</b>	<b>0.1%</b>	<b>0.1%</b>	<b>0.1%</b>	<b>0.1%</b>	<b>0.0%</b>	<b>0.0%</b>	<b>0.5%</b>	<b>56.6%</b>	<b>0.2%</b>	<b>0.3%</b>	<b>100%</b>

\* NO CASES

\*\* NO DATA

## 4 DISTRIBUTION OF RABIES IN EUROPE

### 4.2 Country summaries of rabies cases, 2009 total

01.01.09-31.12.09

Country		Domestic animals									Wildlife											bat	Human cases	total			
		dog	cat	cattle	equine	goat sheep	pig	stray dog	other	subtotal	fox	raccoon dog	raccoon	wolf	badger	marten	other mustelids	other carnivores	wild boar	roe deer	red deer				fallow deer	other	subtotal
Name	Code																										
Albania	ALB			1						1														0			1
Austria	AUT *									0														0			0
Belarus	BLR	114	82	81	16					293	530	58		2	1	2	23						4	620		913	
Belgium	BEL *									0														0			0
Bosnia - Hercegovina	BIH	2		8						10	15													15			25
Bulgaria	BGR	3	3	1			3			10	46												2	48		58	
Croatia	HRV	30	20	4	2	10				66	703			2		4			8			1	718			784	
Cyprus	CYP *									0														0			0
Czech Republic	CZH *									0														0			0
Denmark	DNK									0														0	1		1
Estonia	EST									0	3													3			3
Finland	FIN									0														0	1		1
France	FRA	1								1														0	13		14
Germany	DEU									0														0	5		5
Greece	GRC *									0														0			0
Hungary	HUN									0	2													2	1		3
Iceland	ISL *									0														0			0
Ireland	IRE *									0														0			0
Italy	ITA	3							1	4	61				2					1				64			68
Latvia	LVA	7	4							11	24	24			8		1			1				58			69
Lithuania	LTU	5	1	8						14	17	28		1	1	1						1	49			63	
Luxembourg	LUX *									0														0			0
Macedonia	MKD *									0														0			0
Malta	MLT *									0														0			0
Moldova	MDA	12	4	17	1	2			1	37	22							1					23			60	
Montenegro	MNE	2		4		1				7	40			1	1								42			49	
Norway	NOR *									0														0			0
Poland	POL									0	6													6	2		8
Portugal	PRT *									0														0			0
Romania	ROU	35	28	27	2	14				107	396			2	2	1	2	3	1			1	408	1		516	
Russian Federation	RUS	499	329	235	7	50	5	7	2	1134	1113	174		7	6	10	10	3	2	2		1	1345	1	10	2490	
Serbia	SRB	15	23				2			40	136				1		3						141			181	
Slovak Republic	SVK *									0														0			0
Slovenia	SVN			1						1	33													33			34
Spain	ESP	3								3														0	1		4
Sweden	SWE *									0														0			0
Switzerland + Lichtenstein	CHE *									0														0			0
The Netherlands	NED									0														0	11		11
Turkey	TUR ***	34	8	16	4					62	2												2				64
Ukraine	UKR	226	367	136	3	12				744	487	18	4	5	3	14							6	537		1281	
United Kingdom	UNK									0														0	1	1	2
<b>TOTAL</b>		<b>991</b>	<b>869</b>	<b>539</b>	<b>35</b>	<b>92</b>	<b>8</b>	<b>7</b>	<b>4</b>	<b>2545</b>	<b>3636</b>	<b>302</b>	<b>4</b>	<b>18</b>	<b>26</b>	<b>29</b>	<b>40</b>	<b>9</b>	<b>4</b>	<b>12</b>	<b>1</b>	<b>32</b>	<b>4114</b>	<b>38</b>	<b>11</b>	<b>6708</b>	
<b>PER CENT</b>		<b>14,8%</b>	<b>13,0%</b>	<b>8,0%</b>	<b>0,5%</b>	<b>1,4%</b>	<b>0,1%</b>	<b>0,1%</b>	<b>0,1%</b>	<b>37,9%</b>	<b>54,2%</b>	<b>4,5%</b>	<b>0,1%</b>	<b>0,3%</b>	<b>0,4%</b>	<b>0,4%</b>	<b>0,6%</b>	<b>0,1%</b>	<b>0,1%</b>	<b>0,2%</b>	<b>0,0%</b>	<b>0,0%</b>	<b>0,5%</b>	<b>61,3%</b>	<b>0,6%</b>	<b>0,2%</b>	<b>100%</b>

\* NO CASES

\*\* NO DATA

\*\*\* TURKEY: ONLY FIRST QUARTER

## 4.3 Rabies cases per country and administrative units, 4th quarter 2009

01.10.09-31.12.09

Location	Domestic animals										Wildlife											bat	Human cases	total		
	dog	cat	cattle	equine	goat sheep	pig	stray dog	other	subtotal	fox	raccoon dog	raccoon	wolf	badger	marten	other mustelids	other carnivores	wild boar	roe deer	red deer	fallow deer				other	subtotal
<b>ALBANIA</b>																										
Peshkopi			1						1														0			1
TOTAL	0	0	1	0	0	0	0	0	1	0	0	0	0	0	0	0	0	0	0	0	0	0	0	0	0	1
PER CENT	0.0%	0.0%	100.0%	0.0%	0.0%	0.0%	0.0%	0.0%	100.0%	0.0%	0.0%	0.0%	0.0%	0.0%	0.0%	0.0%	0.0%	0.0%	0.0%	0.0%	0.0%	0.0%	0.0%	0.0%	100.0%	
<b>BELARUS</b>																										
Brest		3		1					4	8													8			12
Gomel	6	7	6	2					21	19	2				1								22			43
Grodno	9	3	4						16	40	8				1								49			65
Minsk	4	8		1					13	38	3												41			54
Mogilev	1	1	1						3	15	1												16			19
Vitebsk	11	7	8						26	20	6		1										27			53
TOTAL	31	29	19	4	0	0	0	0	83	140	20	0	1	0	2	0	0	0	0	0	0	0	163	0	0	246
PER CENT	12.6%	11.8%	7.7%	1.6%	0.0%	0.0%	0.0%	0.0%	33.7%	56.9%	8.1%	0.0%	0.4%	0.0%	0.8%	0.0%	0.0%	0.0%	0.0%	0.0%	0.0%	0.0%	66.3%	0.0%	100.0%	
<b>BOSNIA - HERCEGOVINA</b>																										
Unsko-sanski			1						1														0			1
TOTAL	0	0	1	0	0	0	0	0	1	0	0	0	0	0	0	0	0	0	0	0	0	0	0	0	1	
PER CENT	0.0%	0.0%	100.0%	0.0%	0.0%	0.0%	0.0%	0.0%	100.0%	0.0%	0.0%	0.0%	0.0%	0.0%	0.0%	0.0%	0.0%	0.0%	0.0%	0.0%	0.0%	0.0%	0.0%	0.0%	100.0%	
<b>BULGARIA</b>																										
Kyustendil									0	1													1			1
Pernik									0	1													1			1
Pleven									0	1													1			1
Razgrad									0	1													1			1
Sofia									0	1													1			1
Sofia stolitsa									0	1													1			1
Vratsa									0	1													1			1
TOTAL	0	0	0	0	0	0	0	0	0	7	0	0	0	0	0	0	0	0	0	0	0	0	7	0	0	7
PER CENT	0.0%	0.0%	0.0%	0.0%	0.0%	0.0%	0.0%	0.0%	0.0%	100.0%	0.0%	0.0%	0.0%	0.0%	0.0%	0.0%	0.0%	0.0%	0.0%	0.0%	0.0%	0.0%	100.0%	0.0%	100.0%	
<b>FRANCE</b>																										
Overseas (French Guyana)									0														0	1		1
Centre									0														0	1		1
TOTAL	0	0	0	0	0	0	0	0	0	0	0	0	0	0	0	0	0	0	0	0	0	0	0	2	0	2
PER CENT	0.0%	0.0%	0.0%	0.0%	0.0%	0.0%	0.0%	0.0%	0.0%	0.0%	0.0%	0.0%	0.0%	0.0%	0.0%	0.0%	0.0%	0.0%	0.0%	0.0%	0.0%	0.0%	100.0%	0.0%	100.0%	
<b>GERMANY</b>																										
Lüneburg									0														0	1		1
Saarpfalz-Kreis									0														0	1		1
TOTAL	0	0	0	0	0	0	0	0	0	0	0	0	0	0	0	0	0	0	0	0	0	0	0	2	0	2
PER CENT	0.0%	0.0%	0.0%	0.0%	0.0%	0.0%	0.0%	0.0%	0.0%	0.0%	0.0%	0.0%	0.0%	0.0%	0.0%	0.0%	0.0%	0.0%	0.0%	0.0%	0.0%	0.0%	100.0%	0.0%	100.0%	

## 4.3 Rabies cases per country and administrative units, 4th quarter 2009

01.10.09-31.12.09

Location	Domestic animals										Wildlife											bat	Human cases	total		
	dog	cat	cattle	equine	goat sheep	pig	stray dog	other	subtotal	fox	raccoon dog	raccoon	wolf	badger	marten	other mustelides	other carnivores	wild boar	roe deer	red deer	fallow deer				other	subtotal
<b>CROATIA</b>																										
Bjelovarsko - Bilogorska	1								1	9													9			10
Brodsko - Posavska	1								1	1													1			2
Dubrovačko - Neretvanska					1				1														0			1
Istarska	1								1	10													10			11
Karlovacka	1	2	1		1				5	15													15			20
Koprivniško - Krizevaska									0	12									1				13			13
Krapinsko - Zagorska	1	1							2	29													29			31
Medimurska	1								1	2													2			3
Osjesko - Baranjska		1							1	4													4			5
Požeško - Slovanska	1				4				5	17													17			22
Primorsko - Goranska									0	1									1				2			2
Sibensko - Kninska									0	1													1			1
Sisačko - Moslovačka		1							1	8						1							9			10
Šplitsko - Dalmatinska									0	1											1		2			2
Varaždinska									0	10													10			10
Virotičko - Podravska									0	3													3			3
Vukovarsko - Srijemska		1							1	6													6			7
Zadarska									0	2													2			2
Zagreb									0	16				1									17			17
Zagrebacka	1	1							2	31													31			33
<b>TOTAL</b>	<b>8</b>	<b>7</b>	<b>1</b>	<b>0</b>	<b>6</b>	<b>0</b>	<b>0</b>	<b>0</b>	<b>22</b>	<b>178</b>	<b>0</b>	<b>0</b>	<b>0</b>	<b>1</b>	<b>0</b>	<b>1</b>	<b>0</b>	<b>0</b>	<b>2</b>	<b>0</b>	<b>0</b>	<b>1</b>	<b>183</b>	<b>0</b>	<b>0</b>	<b>205</b>
<b>PER CENT</b>	<b>3.9%</b>	<b>3.4%</b>	<b>0.5%</b>	<b>0.0%</b>	<b>2.9%</b>	<b>0.0%</b>	<b>0.0%</b>	<b>0.0%</b>	<b>10.7%</b>	<b>86.8%</b>	<b>0.0%</b>	<b>0.0%</b>	<b>0.0%</b>	<b>0.5%</b>	<b>0.0%</b>	<b>0.5%</b>	<b>0.0%</b>	<b>0.0%</b>	<b>1.0%</b>	<b>0.0%</b>	<b>0.0%</b>	<b>0.5%</b>	<b>89.3%</b>	<b>0.0%</b>	<b>0.0%</b>	<b>100%</b>
<b>HUNGARY</b>																										
Szabolcs-Szatmar-Bereg									0	1													1			1
<b>TOTAL</b>	<b>0</b>	<b>0</b>	<b>0</b>	<b>0</b>	<b>0</b>	<b>0</b>	<b>0</b>	<b>0</b>	<b>0</b>	<b>1</b>	<b>0</b>	<b>0</b>	<b>0</b>	<b>0</b>	<b>0</b>	<b>0</b>	<b>0</b>	<b>0</b>	<b>0</b>	<b>0</b>	<b>0</b>	<b>0</b>	<b>1</b>	<b>0</b>	<b>0</b>	<b>1</b>
<b>PER CENT</b>	<b>0.0%</b>	<b>0.0%</b>	<b>0.0%</b>	<b>0.0%</b>	<b>0.0%</b>	<b>0.0%</b>	<b>0.0%</b>	<b>0.0%</b>	<b>0.0%</b>	<b>100.0%</b>	<b>0.0%</b>	<b>0.0%</b>	<b>0.0%</b>	<b>0.0%</b>	<b>0.0%</b>	<b>0.0%</b>	<b>0.0%</b>	<b>0.0%</b>	<b>0.0%</b>	<b>0.0%</b>	<b>0.0%</b>	<b>0.0%</b>	<b>100.0%</b>	<b>0.0%</b>	<b>0.0%</b>	<b>100%</b>
<b>ITALY</b>																										
Belluno	2							1	3	29			1										30			33
Pordenone									0	9													9			9
Trieste									0	1													1			1
Udine									0	4													4			4
<b>TOTAL</b>	<b>2</b>	<b>0</b>	<b>0</b>	<b>0</b>	<b>0</b>	<b>0</b>	<b>0</b>	<b>1</b>	<b>3</b>	<b>43</b>	<b>0</b>	<b>0</b>	<b>0</b>	<b>1</b>	<b>0</b>	<b>0</b>	<b>0</b>	<b>0</b>	<b>0</b>	<b>0</b>	<b>0</b>	<b>0</b>	<b>44</b>	<b>0</b>	<b>0</b>	<b>47</b>
<b>PER CENT</b>	<b>4.3%</b>	<b>0.0%</b>	<b>0.0%</b>	<b>0.0%</b>	<b>0.0%</b>	<b>0.0%</b>	<b>0.0%</b>	<b>2.1%</b>	<b>6.4%</b>	<b>91.5%</b>	<b>0.0%</b>	<b>0.0%</b>	<b>0.0%</b>	<b>2.1%</b>	<b>0.0%</b>	<b>0.0%</b>	<b>0.0%</b>	<b>0.0%</b>	<b>0.0%</b>	<b>0.0%</b>	<b>0.0%</b>	<b>0.0%</b>	<b>93.6%</b>	<b>0.0%</b>	<b>0.0%</b>	<b>100%</b>
<b>MOLDOVA</b>																										
Moldova	3	3	13						19	8													8			27
<b>TOTAL</b>	<b>3</b>	<b>3</b>	<b>13</b>	<b>0</b>	<b>0</b>	<b>0</b>	<b>0</b>	<b>0</b>	<b>19</b>	<b>8</b>	<b>0</b>	<b>0</b>	<b>0</b>	<b>0</b>	<b>0</b>	<b>0</b>	<b>0</b>	<b>0</b>	<b>0</b>	<b>0</b>	<b>0</b>	<b>0</b>	<b>8</b>	<b>0</b>	<b>0</b>	<b>27</b>
<b>PER CENT</b>	<b>11.1%</b>	<b>11.1%</b>	<b>48.1%</b>	<b>0.0%</b>	<b>0.0%</b>	<b>0.0%</b>	<b>0.0%</b>	<b>0.0%</b>	<b>70.4%</b>	<b>29.6%</b>	<b>0.0%</b>	<b>0.0%</b>	<b>0.0%</b>	<b>0.0%</b>	<b>0.0%</b>	<b>0.0%</b>	<b>0.0%</b>	<b>0.0%</b>	<b>0.0%</b>	<b>0.0%</b>	<b>0.0%</b>	<b>0.0%</b>	<b>29.6%</b>	<b>0.0%</b>	<b>0.0%</b>	<b>100%</b>

## 4.3 Rabies cases per country and administrative units, 4th quarter 2009

01.10.09-31.12.09

Location	Domestic animals										Wildlife											bat	Human cases	total		
	dog	cat	cattle	equine	goat sheep	pig	stray dog	other	subtotal	fox	raccoon dog	raccoon	wolf	badger	marten	other mustelids	other carnivores	wild boar	roe deer	red deer	fallow deer				other	subtotal
<b>LATVIA</b>																										
Daugavpils r.									0					1									1			1
Dobeles r.								0		1													1			1
Kraslava r.	1							1		1													1			2
Liepajas r.								0		1	1												2			2
Ludza r.								0		3													3			3
Preiļu r.								0		1													1			1
Saldus r.								0			1												1			1
Talsu r.								0					1										1			1
Tukuma r.								0			1												1			1
Valmieras r.								0			1												1			1
<b>TOTAL</b>	<b>1</b>	<b>0</b>	<b>0</b>	<b>0</b>	<b>0</b>	<b>0</b>	<b>0</b>	<b>0</b>	<b>1</b>	<b>6</b>	<b>5</b>	<b>0</b>	<b>0</b>	<b>2</b>	<b>0</b>	<b>0</b>	<b>0</b>	<b>0</b>	<b>0</b>	<b>0</b>	<b>0</b>	<b>0</b>	<b>13</b>	<b>0</b>	<b>0</b>	<b>14</b>
<b>PER CENT</b>	<b>7.1%</b>	<b>0.0%</b>	<b>0.0%</b>	<b>0.0%</b>	<b>0.0%</b>	<b>0.0%</b>	<b>0.0%</b>	<b>0.0%</b>	<b>7.1%</b>	<b>42.9%</b>	<b>35.7%</b>	<b>0.0%</b>	<b>0.0%</b>	<b>14.3%</b>	<b>0.0%</b>	<b>0.0%</b>	<b>0.0%</b>	<b>0.0%</b>	<b>0.0%</b>	<b>0.0%</b>	<b>0.0%</b>	<b>0.0%</b>	<b>92.9%</b>	<b>0.0%</b>	<b>0.0%</b>	<b>100%</b>
<b>LITHUANIA</b>																										
Alytaus								0		1													1			1
Kauno			1					1															0			1
Klaipėdos			1					1			2												2			3
Marijampolės			1					1															0			1
Panevezio			1					1															0			1
Utenos								0			1												1			1
Vilniaus								0		1	5		1										7			7
<b>TOTAL</b>	<b>0</b>	<b>0</b>	<b>4</b>	<b>0</b>	<b>0</b>	<b>0</b>	<b>0</b>	<b>4</b>	<b>2</b>	<b>8</b>	<b>0</b>	<b>1</b>	<b>0</b>	<b>0</b>	<b>0</b>	<b>0</b>	<b>0</b>	<b>0</b>	<b>0</b>	<b>0</b>	<b>0</b>	<b>11</b>	<b>0</b>	<b>0</b>	<b>15</b>	
<b>PER CENT</b>	<b>0.0%</b>	<b>0.0%</b>	<b>26.7%</b>	<b>0.0%</b>	<b>0.0%</b>	<b>0.0%</b>	<b>0.0%</b>	<b>26.7%</b>	<b>13.3%</b>	<b>53.3%</b>	<b>0.0%</b>	<b>6.7%</b>	<b>0.0%</b>	<b>0.0%</b>	<b>0.0%</b>	<b>0.0%</b>	<b>0.0%</b>	<b>0.0%</b>	<b>0.0%</b>	<b>0.0%</b>	<b>0.0%</b>	<b>73.3%</b>	<b>0.0%</b>	<b>0.0%</b>	<b>100%</b>	
<b>MONTENEGRO</b>																										
Montenegro	1		1		1			3	10													10			13	
<b>TOTAL</b>	<b>1</b>	<b>0</b>	<b>1</b>	<b>0</b>	<b>1</b>	<b>0</b>	<b>0</b>	<b>3</b>	<b>10</b>	<b>0</b>	<b>0</b>	<b>0</b>	<b>0</b>	<b>0</b>	<b>0</b>	<b>0</b>	<b>0</b>	<b>0</b>	<b>0</b>	<b>0</b>	<b>0</b>	<b>10</b>	<b>0</b>	<b>0</b>	<b>13</b>	
<b>PER CENT</b>	<b>7.7%</b>	<b>0.0%</b>	<b>7.7%</b>	<b>0.0%</b>	<b>7.7%</b>	<b>0.0%</b>	<b>0.0%</b>	<b>23.1%</b>	<b>76.9%</b>	<b>0.0%</b>	<b>0.0%</b>	<b>0.0%</b>	<b>0.0%</b>	<b>0.0%</b>	<b>0.0%</b>	<b>0.0%</b>	<b>0.0%</b>	<b>0.0%</b>	<b>0.0%</b>	<b>0.0%</b>	<b>0.0%</b>	<b>76.9%</b>	<b>0.0%</b>	<b>0.0%</b>	<b>100%</b>	

## 4.3 Rabies cases per country and administrative units, 4th quarter 2009

01.10.09-31.12.09

Location	Domestic animals										Wildlife											bat	Human cases	total			
	dog	cat	cattle	equine	goat	sheep	pig	stray dog	other	subtotal	fox	raccoon dog	raccoon	wolf	badger	marten	other mustelides	other carnivores	wild boar	roe deer	red deer				fallow deer	other	subtotal
<b>ROMANIA</b>																											
Arges		1							1	1														1			2
Bacau	1								1	5									1				1				8
Bihor	1		1						2	2			1											1			5
Bistrita-Nasaud	1								1	8																	9
Botosani			1						1	1																	1
Braila									0	2																	2
Brasov		1							1	3																	4
Buzau		1							1	7																	8
Calarasi									0	6																	6
Cluj									0	2																	2
Covasna									0	3																	3
Dambovita									0	8																	8
Galati	1								1	1																	1
Giurgiu									0	2																	2
Gorj									0	2																	2
Harghita									0	1																	1
Hunedoara	1								1	2																	3
Iasi			2						2	15																	17
Maramures									0	1																	1
Mehedinti									0	1																	1
Mures									0	4																	4
Neamt	1		1						2	2																	4
Olt	2	1							3	4																	7
Prahova									0	1																	1
Salaj	1								1	6																	7
Satu Mare	3								3	4																	7
Suceava		1							1	8					1												10
Teleorman									0	2																	2
Timis									0	1																	1
Tulcea			1						1	1																	1
Valcea									0	1			1														1
Vaslui	1		1						2	10																	12
Vrancea									0	1																	1
<b>TOTAL</b>	<b>13</b>	<b>5</b>	<b>7</b>	<b>0</b>	<b>0</b>	<b>0</b>	<b>0</b>	<b>0</b>	<b>25</b>	<b>114</b>	<b>0</b>	<b>0</b>	<b>1</b>	<b>1</b>	<b>1</b>	<b>0</b>	<b>0</b>	<b>1</b>	<b>0</b>	<b>0</b>	<b>0</b>	<b>0</b>	<b>1</b>	<b>119</b>	<b>0</b>	<b>0</b>	<b>144</b>
<b>PER CENT</b>	<b>9.0%</b>	<b>3.5%</b>	<b>4.9%</b>	<b>0.0%</b>	<b>0.0%</b>	<b>0.0%</b>	<b>0.0%</b>	<b>0.0%</b>	<b>17.4%</b>	<b>79.2%</b>	<b>0.0%</b>	<b>0.0%</b>	<b>0.7%</b>	<b>0.7%</b>	<b>0.7%</b>	<b>0.0%</b>	<b>0.0%</b>	<b>0.7%</b>	<b>0.0%</b>	<b>0.0%</b>	<b>0.0%</b>	<b>0.7%</b>	<b>82.6%</b>	<b>0.0%</b>	<b>0.0%</b>	<b>100%</b>	
<b>SERBIA</b>																											
Central Serbia	1	5							6	20							1							21			27
Vojvodina	1	3							4	11							1			1				13			17
<b>TOTAL</b>	<b>2</b>	<b>8</b>	<b>0</b>	<b>0</b>	<b>0</b>	<b>0</b>	<b>0</b>	<b>0</b>	<b>10</b>	<b>31</b>	<b>0</b>	<b>0</b>	<b>0</b>	<b>0</b>	<b>0</b>	<b>0</b>	<b>2</b>	<b>0</b>	<b>0</b>	<b>1</b>	<b>0</b>	<b>0</b>	<b>0</b>	<b>34</b>	<b>0</b>	<b>0</b>	<b>44</b>
<b>PER CENT</b>	<b>4.5%</b>	<b>18.2%</b>	<b>0.0%</b>	<b>0.0%</b>	<b>0.0%</b>	<b>0.0%</b>	<b>0.0%</b>	<b>0.0%</b>	<b>22.7%</b>	<b>70.5%</b>	<b>0.0%</b>	<b>0.0%</b>	<b>0.0%</b>	<b>0.0%</b>	<b>0.0%</b>	<b>0.0%</b>	<b>4.5%</b>	<b>0.0%</b>	<b>0.0%</b>	<b>2.3%</b>	<b>0.0%</b>	<b>0.0%</b>	<b>77.3%</b>	<b>0.0%</b>	<b>0.0%</b>	<b>100%</b>	

## 4.3 Rabies cases per country and administrative units, 4th quarter 2009

01.10.09-31.12.09

Location	Domestic animals									Wildlife											bat	Human cases	total			
	dog	cat	cattle	equine	goat sheep	pig	stray dog	other	subtotal	fox	raccoon dog	raccoon	wolf	badger	marten	other mustelids	other carnivores	wild boar	roe deer	red deer				fallow deer	other	subtotal
<b>RUSSIAN FEDERATION</b>																										
no region specified									0														0		1	1
Astrahanskaja obl.	4	12	6		1				23		2											1	3			26
Belgorodskaja obl.	12	23	18		3	1			57	24													24			81
Brjanskaja obl.		2							2	6	2					1							9			11
Cecenskaja resp.			3						3														0			3
Cuvasskaja resp.	1		2		1				4	6													6			10
Dagestan resp.		1	2						3													1	1			4
Jaroslavsckaja obl.									0	1	1												2			2
Kabardino-Balkanskaja resp.			1						1														0			1
Kaliningradskaja obl.	1		2						3	2	2												4			7
Kalmykija resp.	3				1				4														0			4
Kaluzskaja obl.	3	1			1				5	7	2												9			14
Karacaevo-Cerkesskaja resp.	1	1	2				1		5														0			5
Krasnodarskij kr.	10	7							17	3												1	4			21
Kurskaja obl.	4	5	1						10	2													2			12
Lipeckaja obl.		1	2			1			4	5													5			9
Marij El resp.	1								1	5													5			6
Mordovija resp.	4	5	8		1				18	23													23		1	42
Moskovskaja obl.	11	6							17	30	13												43			60
Moskva g.	3								3														0			3
Nizegorodskaja obl.	4	7							11	17	1											1	19			30
Orlovskaja obl.	2	2							4	9													9			13
Penzenskaja obl.	11	6	5		2				24	44											1		45			69
Pskovskaja obl.									0	3	2		1										6			6
Rjazanskaja obl.							1		1	1													1			2
Rostovskaja obl.			5						5	5												1	6			11
Saratovskaja obl.	12	11	17				2		42	28	1		1										30			72
Severnaja Osetija-Alanija resp.	10	2	4						16	5													5			21
Smolenskaja obl.	1	2							3	7	8												15			18
Stavropol'skij kr.	4	12	5		7				28	4													4			32
Tambovskaja obl.	5	3	17	1					26	29													29			55
Tul'skaja obl.									0	3								1					5			5
Tverskaja obl.	10	9	2		1				22	13	27			2									42		3	67
Ul'janovskaja obl.	8								8	7													7			15
Vladimirskaja obl.	2	2							4	2													2			6
Volgogradskaja obl.	4	9	10		1				24	12													12		1	37
Voronezskaja obl.	17	9	9		1	1			37	17									1				18			55
<b>TOTAL</b>	<b>148</b>	<b>138</b>	<b>121</b>	<b>1</b>	<b>20</b>	<b>3</b>	<b>4</b>	<b>0</b>	<b>435</b>	<b>320</b>	<b>61</b>	<b>0</b>	<b>2</b>	<b>2</b>	<b>1</b>	<b>1</b>	<b>0</b>	<b>1</b>	<b>1</b>	<b>0</b>	<b>1</b>	<b>5</b>	<b>395</b>	<b>0</b>	<b>6</b>	<b>836</b>
<b>PER CENT</b>	<b>17,7%</b>	<b>16,5%</b>	<b>14,5%</b>	<b>0,1%</b>	<b>2,4%</b>	<b>0,4%</b>	<b>0,5%</b>	<b>0,0%</b>	<b>52,0%</b>	<b>38,3%</b>	<b>7,3%</b>	<b>0,0%</b>	<b>0,2%</b>	<b>0,2%</b>	<b>0,1%</b>	<b>0,1%</b>	<b>0,0%</b>	<b>0,1%</b>	<b>0,1%</b>	<b>0,0%</b>	<b>0,1%</b>	<b>0,6%</b>	<b>47,2%</b>	<b>0,0%</b>	<b>0,7%</b>	<b>100%</b>



## 4.3 Rabies cases per country and administrative units, 4th quarter 2009

01.10.09-31.12.09

Location	Domestic animals										Wildlife											bat	Human cases	total		
	dog	cat	cattle	equine	goat sheep	pig	stray dog	other	subtotal	fox	raccoon dog	raccoon	wolf	badger	marten	other mustelids	other carnivores	wild boar	roe deer	red deer	fallow deer				other	subtotal
<b>SLOVENIA</b>																										
Podravska									0	5													5			5
Pomurska									0	1													1			1
Savinjska									0	6													6			6
<b>TOTAL</b>	<b>0</b>	<b>0</b>	<b>0</b>	<b>0</b>	<b>0</b>	<b>0</b>	<b>0</b>	<b>0</b>	<b>0</b>	<b>12</b>	<b>0</b>	<b>0</b>	<b>0</b>	<b>0</b>	<b>0</b>	<b>0</b>	<b>0</b>	<b>0</b>	<b>0</b>	<b>0</b>	<b>0</b>	<b>0</b>	<b>12</b>	<b>0</b>	<b>0</b>	<b>12</b>
<b>PER CENT</b>	<b>0.0%</b>	<b>0.0%</b>	<b>0.0%</b>	<b>0.0%</b>	<b>0.0%</b>	<b>0.0%</b>	<b>0.0%</b>	<b>0.0%</b>	<b>0.0%</b>	<b>100.0%</b>	<b>0.0%</b>	<b>0.0%</b>	<b>0.0%</b>	<b>0.0%</b>	<b>0.0%</b>	<b>0.0%</b>	<b>0.0%</b>	<b>0.0%</b>	<b>0.0%</b>	<b>0.0%</b>	<b>0.0%</b>	<b>0.0%</b>	<b>100.0%</b>	<b>0.0%</b>	<b>0.0%</b>	<b>100%</b>
<b>UKRAINE</b>																										
Bolynskaja o.		3							3	3													3			6
Cherkasskaja o.	3	4	2						9	4	1				1								6			15
Chernigovskaja o.	4	15	7	1					27	11	1	1											13			40
Chernovitskaja o.									0						1								1			1
Dnepropetrovskaja o.	18	18	18		1				55	15	5		1										21			76
Donetskaja o.	15	21	7		1				44	28	1				1								30			74
Ivano-Frankovskaja o.		1							1	1													1			2
Khar'kovskaja o.	9	25	11						45	18			1										19			64
Khersonskaja o.	10	22	9	1	1				43	33		1											34			77
Khmel'nitskaja o.	8	10	7						25	31													31			56
Kirovogradskaja o.	2	1	2		1				6	9													9			15
Kiyevskaja o.	2	3	1						6	4													4			10
Luganskaja o.	4	4	2						10	4	2												6			16
L'vovskaja o.	3	2	1						6	3	1		1		1								6			12
Nikolayevskaja o.		3	1						4	3													3			7
Odesskaja o.		8	3						11	7				1							1		9			20
Poltavskaja o.	1	2	1						4	3						1							3			7
Rovenskaja o.		1							1	1	1	1											2			3
Sumskaja o.	1	5	3						9	10													10			19
Ternopol'skaja o.		2							2	4				1									5			7
Vinnitskaja o.	10	20	4						34	45											2		47			81
Zakarpatskaja o.		1	1						2	1												2	1			3
Zaporozhskaja o.	1	10	3						14	11					1								12			26
Zhitomirskaja o.	3	3	5						11	10					1							1	12			23
<b>TOTAL</b>	<b>94</b>	<b>184</b>	<b>88</b>	<b>2</b>	<b>4</b>	<b>0</b>	<b>0</b>	<b>0</b>	<b>372</b>	<b>259</b>	<b>12</b>	<b>2</b>	<b>3</b>	<b>2</b>	<b>6</b>	<b>0</b>	<b>0</b>	<b>0</b>	<b>0</b>	<b>0</b>	<b>0</b>	<b>4</b>	<b>288</b>	<b>0</b>	<b>0</b>	<b>660</b>
<b>PER CENT</b>	<b>14.2%</b>	<b>27.9%</b>	<b>13.3%</b>	<b>0.3%</b>	<b>0.6%</b>	<b>0.0%</b>	<b>0.0%</b>	<b>0.0%</b>	<b>56.4%</b>	<b>39.2%</b>	<b>1.8%</b>	<b>0.3%</b>	<b>0.5%</b>	<b>0.3%</b>	<b>0.9%</b>	<b>0.0%</b>	<b>0.0%</b>	<b>0.0%</b>	<b>0.0%</b>	<b>0.0%</b>	<b>0.0%</b>	<b>0.6%</b>	<b>43.6%</b>	<b>0.0%</b>	<b>0.0%</b>	<b>100%</b>

#### 4.4 Summary of animals tested for rabies in Europe (total 2009)

ANIMAL TESTED

01.01.09-31.12.09

Name	Code	Total	Wildlife	Domestic animals	Bats	Remarks
ALBANIA	ALB	68	35	4	29	
AUSTRIA	AUT*	8826	8313	153	360	
BELARUS	BLR	0	0	0	0	no data
BELGIUM	BEL*	575	229	317	29	
BOSNIA - HERCEGOVINA	BIH	29	1	28	0	
BULGARIA	BGR	505	401	103	1	
CROATIA	HRV	5385	4282	1103	0	
CYPRUS	CYP*	0	0	0	0	no data
CZECH REPUBLIC	CZH*	7451	7102	327	22	
DENMARK	DNK*	14	0	5	9	
ESTONIA	EST	228	150	77	1	
FINLAND	FIN*	548	495	32	21	
FRANCE	FRA*	1819	94	1476	249	
GERMANY	DEU*	17852	17390	396	66	
GREECE	GRC*	15	1	11	3	
HUNGARY	HUN	8848	8080	757	11	
ICELAND	ISL*	0	0	0	0	no data
IRELAND	IRE*	0	0	0	0	no data
ITALY	ITA	4605	3970	628	7	
LATVIA	LVA	648	478	170	0	
LITHUANIA	LTU	1059	784	275	0	
LUXEMBOURG	LUX*	29	27	2	0	
MACEDONIA	MKD	0	0	0	0	no data
MALTA	MLT*	0	0	0	0	no data
MOLDOVA	MDA	108	28	80	0	
MONTENEGRO	MNE	64	63	1	0	
NETHERLANDS	NED*	181	8	13	160	
NORWAY	NOR*	0	0	0	0	no data
POLAND	POL	25453	23795	1549	109	
PORTUGAL	PRT*	0	0	0	0	no data
ROMANIA	ROU	0	0	0	0	no data
RUSSIAN FEDERATION	RUS	0	0	0	0	no data
SERBIA	SRB	409	140	269	0	
SLOVAK REPUBLIC	SVK	3701	3281	418	2	
SLOVENIA	SVN	2980	2576	233	171	
SPAIN	ESP*	0	0	0	0	no data
SWEDEN	SWE*	0	0	0	0	no data
SWITZERLAND + LIEC.	CHE*	110	39	30	41	
TURKEY	TUR	64	2	62	0	1st quarter
UKRAINE	UKR	8606	8606	0	0	
UNITED KINGDOM	UNK*	1134	7	30	1097	
<b>TOTAL</b>		<b>101314</b>	<b>90377</b>	<b>8549</b>	<b>2388</b>	

Wildlife: excluding bats

\* rabies free

## 4.5 Trend tables

### 4.5.1 Comparison of the reporting quarter (IV/2009) with the previous quarter (III/2009)

NAME	Total			Wildlife			Domestic animals			Bats			Human		
	IV 2009 (no.)	III 2009 (no.)	Difference	IV 2009 (no.)	III 2009 (no.)	Difference	IV 2009 (no.)	III 2009 (no.)	Difference	IV 2009 (no.)	III 2009 (no.)	Difference	IV 2009 (no.)	III 2009 (no.)	Difference
Albania	1		1				1		1						
Austria															
Belarus	246	205	41	163	130	33	83	75	8						
Belgium															
Bosnia - Hercegovina	1	6	-5		4	-4	1	2	-1						
Bulgaria	7	9	-2	7	7			2	-2						
Croatia	205	134	71	183	126	57	22	8	14						
Cyprus															
Czech Republic															
Denmark															
Estonia		1	-1		1	-1									
Finland		1	-1								1	-1			
France	2	7	-5							2	7	-5			
Germany	2	2								2	2				
Greece															
Hungary	1	1		1		1					1	-1			
Iceland															
Ireland															
Italy	47	11	36	44	11	33	3		3						
Latvia	14	19	-5	13	14	-1	1	5	-4						
Lithuania	15	19	-4	11	15	-4	4	4							
Luxembourg															
Macedonia															
Malta															
Moldova	27	9	18	8	5	3	19	4	15						
Montenegro	13	4		10	3		3	1							
Norway															
Poland		1	-1								1	-1			
Portugal															
Romania	144	75	69	119	47	72	25	27	-2		1	-1			
Russian Federation	836	502	334	395	313	82	435	189	246				6		6
Serbia	44	29	15	34	24	10	10	5	5						
Slovak Republic															
Slovenia	12	2	10	12	2	10									
Spain															
Sweden															
Switzerland + Lichtenstein															
The Netherlands		7	-7								7	-7			
Turkey*															
Ukraine	660	253	407	288	110	178	372	143	229						
United Kingdom		1	-1								1	-1			
<b>TOTAL</b>	<b>2277</b>	<b>1298</b>	<b>970</b>	<b>1288</b>	<b>812</b>	<b>469</b>	<b>979</b>	<b>465</b>	<b>512</b>	<b>4</b>	<b>21</b>	<b>-17</b>	<b>6</b>	<b>0</b>	<b>6</b>

Wildlife: excluding bats

IV/2009 (no.), III/2009 (no.): number of cases

Difference: no. of cases in IV/2009 minus cases in III/2009

\* no data

#### 4.5.2 Comparison of the reporting quarter (IV/2009) with the same quarter of the previous year (IV/2008)

NAME	Total			Wildlife			Domestic animals			Bats			Human		
	IV 2009 (no.)	IV 2008 (no.)	Difference	IV 2009 (no.)	IV 2008 (no.)	Difference	IV 2009 (no.)	IV 2008 (no.)	Difference	IV 2009 (no.)	IV 2008 (no.)	Difference	IV 2009 (no.)	IV 2008 (no.)	Difference
Albania	1		1				1		1						
Austria															
Belarus	246	247	-1	163	173	-10	83	74	9						
Belgium															
Bosnia - Hercegovina	1	11	-10		7	-7	1	4	-3						
Bulgaria	7	18	-11	7	15	-8		3	-3						
Croatia	205	239	-34	183	224	-41	22	15	7						
Cyprus															
Czech Republic															
Denmark															
Estonia															
Finland															
France	2	2						1	-1	2	1	1			
Germany	2	3	-1					1	-1	2	2				
Greece															
Hungary	1	3	-2	1	2	-1		1	-1						
Iceland															
Ireland															
Italy	47	9	38	44	9	35	3		3						
Latvia	14	23	-9	13	21	-8	1	2	-1						
Lithuania	15	11	4	11	7	4	4	4							
Luxembourg															
Macedonia															
Malta															
Moldova	27	12	15	8	3	5	19	9	10						
Montenegro	13	8		10	7		3	1							
Norway															
Poland		7	-7		6	-6		1	-1						
Portugal															
Romania	144	240	-96	119	158	-39	25	82	-57						
Russian Federation	836	763	73	395	373	22	435	384	51				6	6	
Serbia	44	66	-22	34	52	-18	10	14	-4						
Slovak Republic															
Slovenia	12	13	-1	12	12			1	-1						
Spain															
Sweden															
Switzerland + Lichtenstein															
The Netherlands															
Turkey	*	65		*	5		*	60		*			*		
Ukraine	660	497	163	288	215	73	372	282	90						
United Kingdom		1	-1								1	-1			
<b>TOTAL</b>	<b>2277</b>	<b>2238</b>	<b>99</b>	<b>1288</b>	<b>1289</b>	<b>1</b>	<b>979</b>	<b>939</b>	<b>98</b>	<b>4</b>	<b>4</b>	<b>0</b>	<b>6</b>	<b>6</b>	<b>0</b>

Wildlife: excluding bats

IV/2009 (no.), IV/2008 (no.): number of cases

Difference: no. of cases in IV/2009 minus cases in IV/2008

\* no data

#### 4.5.3 Comparison of the reporting year (2009) with the previous year (2008)

NAME	Total				Wildlife				Domestic animals				EBLV			Human		
	No. 2009	No. 2008	Difference	in %	No. 2009	No. 2008	Difference	in %	No. 2009	No. 2008	Difference	in %	No. 2009	No. 2008	Difference	No. 2009	No. 2008	Difference
ALBANIA									1	0	1							
AUSTRIA																		
BELARUS	913	964	-51	94,7	620	735	-115	84,4	293	229	64	127,9						
BELGIUM	0	0	0								0							
BOSNIA A HERCEGOV	25	83	-58	30,1	15	71	-56	21,1	10	12	-2	83,3						
BULGARIA	58	51	7	113,7	48	41	7	117,1	10	10	0	100,0						
CROATIA	784	1061	-277	73,9	718	982	-264	73,1	66	79	-13	83,5						
CYPRUS																		
CZECH REPUBLIC																		
DENMARK	1	0	1										1		1			
ESTONIA	3	3	0	100,0	3	1	2	300,0		2	-2	0,0						
FINLAND													1					
FRANCE	14	8	6	175,0					1	3			13	5	8			
GERMANY	5	11	-6	45,5						1			5	10	-5			
GREECE																		
HUNGARY	3	7	-4	42,9	2	6	-4	33,3		1	-1	0,0	1					
ICELAND																		
IRELAND																		
ITALY	68	9	59		64	9	55		4									
LATVIA	69	110	-41	62,7	58	90	-32	64,4	11	20	-9	55,0						
LITHUANIA	63	69	-6	91,3	49	47	2	104,3	14	22	-8	63,6						
LUXEMBOURG																		
MACEDONIA																		
MALTA																		
MOLDOVA	60	46	14		23	12	11		37	34								
MONTENEGRO	49	43	6	114,0	42	38	4		7	5								
NORWAY																		
POLAND	8	29	-21	27,6	6	21	-15	28,6		5	-5	0,0	2	3				
PORTUGAL																		
ROMANIA	516	1089	-573	47,4	408	906	-498	45,0	107	183	-76	58,5	1					
RUSSIAN FEDERATION	2490	3353	-863	74,3	1345	1628	-283	82,6	1134	1713	-579	66,2	1		1	10	12	-2
SERBIA	181	234	-53	77,4	141	201	-60		40	33								
SLOVAK REPUBLIC																		
SLOVENIA	34	55	-21	61,8	33	53	-20	62,3	1	2								
SPAIN	4	3	1	133,3					3	2	1		1	1	0			
SWEDEN																		
SWITZERLAND/LIECHTEN.																		
THE NETHERLANDS	11	11	0	100,0									11	11	0			
TURKEY	64	301	-237	21,3	2	44	-42	4,5	62	257	-195	24,1						
UKRAINE	1281	2164	-883	59,2	537	822	-285	65,3	744	1339	-595	55,6		1	-1		2	-2
UNITED KINGDOM	2	3	-1	66,7						1			1	2	-1	1		
TOTAL	6708	9707	-2999	69,1	4114	5707	-1593	72,1	2545	3953	-1408	64,4	38	33	5	11	14	-3

Wildlife: excluding bats

## 5. LIST OF CONTRIBUTORS

---

### **ALB Albania**

Ass. Prof. Dr. Dragush Mati  
Ministry of Agriculture and Food  
Directorate of Veterinary Service  
Tirana /Albania  
Tel: +355 4 222 539  
Fax: +355 4 222 539  
E-mail: vetdirector@albaniaonline.com

### **AUT Austria**

Mag. Ulrich Herzog, CVO  
Bundesministerium für Gesundheit und  
Frauen  
Bereich IV/B (Verbraucher-Gesundheit)  
Radetzkystraße 2  
A-1030 Wien  
Tel. +43-1-7 11 00-4824  
Fax +43-1-7 10 41 51  
E-mail: ulrich.herzog@bmgf.gv.at

### **BLR Belarus**

Dr. A.M. Axenov  
Head of the Central Board of Veterinary  
Medicine  
Ministry of Agriculture and Food  
Kirova 15  
Minsk /Belarus  
Tel: +375-17-227 6623  
Fax: +375-17-227 42 96  
+375-17-227 57 54  
E-mail: vetinsp@mshp.minsk.by

### **BEL Belgium**

Dr. L. Lengelé, CVO  
SPF Santé publique, Sécurité de la  
Chaîne alimentaire et Environnement  
Place Victor Horta, 40 – b. 10 – 1060  
Brussels, Belgium  
Tel: +32-2-524 73 00  
Fax: +32-2-524 73 49

Dr. Renaud Poizat  
AFSCA – Agence fédérale pour la  
Sécurité de la Chaîne alimentaire  
Direction Généralé de la Politique de  
Contrôle  
WTC III, boulevard Simon Bolivar, 30,  
bureau 19/50  
B-1000 Bruxelles/Belgique  
Tel. +32-2-208 38 52  
Fax +32-2-208 36 12

Responsible expert:  
Dr. Ingrid Le Roux  
Dr. Steven Van Gucht

Rabies Laboratory, Contagious and  
Transmittable Diseases  
Rue Engelandstraat 642; 1180 Brussels  
Tel: +32(0)2 373 3256  
Fax: +32(0)2 373 3286

### **BIH Bosnia and Herzegovina**

Dr. Ramiz Velic  
Department of Infectious Diseases  
Veterinary Faculty Sarajevo  
Zmaja od Bosne 90  
Sarajevo 71000 /Bosnia and  
Herzegovina  
Tel: +387-61-160 361  
E-mail: vetzar@bih.net.ba

Dr. Sc. Drago N. Nedic  
Ministry Agriculture, Forestry and  
Water Management of Republika Srpska  
Milosa Obilica 51  
76300 Bijeljina, Republika Srpska  
Bosnia and Herzegovina  
Tel: +387-55-401 812,  
-211 506  
-403 508  
Fax: +387-55-403 508  
-472 353  
E-mail: nedicd@rstel.net  
nedicd@vetservice.org  
Web: www.vetservice.org

### **BUL Bulgaria**

Dr. Petya Petkova  
National Veterinary Service  
Animal Health Directorate  
15A "Pencho Slaveikov" blvd.  
1606 Sofia, Bulgaria  
Tel: +359 2 915 98 42  
Fax: +359 2 952 38 35

### **HVR Croatia**

Dr. Ljerka Zeba  
Veterinary Administration  
Ministry of Agriculture and Forestry  
Vukovarska 78  
10000 Zagreb, Republic of Croatia  
Tel: +385 1 6106207  
Fax: +385 1 6109207  
E-mail: ljerka.zeba@mps.hr

### **CYP Cyprus**

Dr. P. Economides, CVO  
Director of Veterinary Services  
Ministry of Agriculture, Natural  
Resources

and Environment - Veterinary Services -  
1417 Nicosia /Cyprus  
Tel. +357-2-80 52 0  
Fax +357-2-33 28 03  
E-mail vet.services@cytanet.com.cy

#### **CZH Czech Republic**

MVDr. Josef Vitásek  
State Veterinary Administration CR  
Slezská 7  
CZ - 120 00 Praha 2 / Czech Republic  
Tel.: +420 - 227 010 144  
Fax : +420 - 227 010 195  
E-mail: j.vitasek@svscr.cz

Responsible expert:

MVDr. Ivan Nágl  
National Reference Laboratory for Rabies  
State Veterinary Institute Prague  
Sídlištní 136/24  
CZ -165 03 Praha 6 - Lysolaje  
Tel. +420 251 031 281  
Fax +420 220 920 655  
E-mail:i.nagl@svupraha.cz

#### **DNK Denmark**

Dr. Jan Mousing, CVO  
Ministry for Food, Agriculture and  
Fisheries  
Danish Veterinary and Food  
Administration  
Mørkhøj Bygade 19  
DK-2860 Søborg  
Tel.: +45 33 95 60 00  
Fax: +45 33 95 60 01  
Email: jam@fvst.dk

Responsible expert:

Dr. Pia Vestergaard  
Ministry for Food, Agriculture and  
Fisheries  
Danish Veterinary and Food  
Administration  
Mørkhøj Bygade 19  
DK-2860 Søborg  
Tel.: +45 33 95 65 96  
Fax: +45 39 67 52 48  
Email: pv@fvst.dk

#### **EST Estonia**

Dr. Matti Nautras, CVO  
Head of Animal Health Department  
Veterinary and Food Broad of Estonia  
Väike-Paala-Street 3  
11415 Tallinn /Estonia  
Tel. +372-605 1732  
Fax +372-638 0210  
E-mail nautras@vet.agri.ee  
Responsible expert:  
Dr. Külli Must

Head of Department  
Veterinary and Food Laboratory  
Kreutzwaldi 30  
51006 Tartu /Estonia  
Tel: +372-742 1246  
Fax: +372-742 1730  
E-mail: kylli@vetlab.ee

#### **FIN Finland**

Dr. Matti Aho, CVO  
Dr. Tiia Tuupanen  
Ministry of Agriculture and Forestry  
Department of Food and Health, Animal  
Health  
PO BOX 30  
FIN-00023 Government  
Finland  
Tel: +358-9-16001,  
+358-9-1605 2787  
Fax: +358-9-1605 4777,  
+358-9-1605 3338  
E-mail cvo-finland@mmm.fi  
tiia.tuupanen@mmm.fi  
Web: www.mmm.fi

#### **FRA France**

Dr. Florence Cliquet  
Agence Francaise de Securite Sanitaire  
des Aliments (afssa) - Site de Nancy  
Domaine de Pixérécourt  
Boite Postale 9  
F-54220 Malzéville /Republique  
Francaise  
Tel: +33-3-83.29.89.50  
Fax: +33-3-83.29.89.59  
E-mail: f.cliquet@nancy.afssa.fr  
Web: www.afssa.fr

#### **DEU Germany**

Prof. Dr. Werner Zwingmann, CVO  
Fed. Ministry of Food, Agriculture and  
Consumer Protection  
PF 14 02 70, D-53103 Bonn, Germany  
Tel: +49 228 529 41 57  
Fax: +49 228 529 35 53  
E-mail: poststelle@bmelv.bund.de

Responsible experts:

Dr. Thomas Müller  
Dr. Conrad Freuling  
Friedrich-Loeffler-Institute  
Federal Research Institute for Animal  
Health, WHO Collaborating Centre for  
Rabies Surveillance and Research,  
Wusterhausen, Seestr. 55  
D-16868 Wusterhausen/Germany  
Tel: +49-33979-80 0  
Fax: +49-33979-80 200 and 222  
E-mail: who-rabies@fli.bund.de  
Web: www.fli.bund.de

**GRC Greece**

Dr Olga Mangana  
 Head of Institute of Infectious and  
 Parasitice disease  
 25 Neapoleos street. Agia Paraskevi  
 15310  
 Greece  
 Tel, Fax: +30 210 6011499  
 viruslab.ath@gmail.com

**HUN Hungary**

Dr. Tibor Balint  
 Dr. Zsolt Földi  
 Ministry of Agriculture and Regional  
 Development  
 Animal Health and Food Control  
 Department  
 H-1860 Budapest 55. Pf. 1  
 Tel. +36-1 3014329 and 332 7986  
 Fax +36-1 301 4669  
 E-mail foldiz@oai.hu

**ISL Iceland**

Dr. Halldor Runolfsson  
 Chief Veterinary Officer  
 Ministry of Agriculture, Veterinary  
 Services  
 Solvholsgata 7  
 150 Reykjavik /Iceland  
 Tel. +354-560 9750  
 Fax +354-552 1160  
 E-mail halldor.runolfsson@lan.stjr.is

**IRE Ireland**

Dr. J. Melville  
 Superintendent Veterinary Inspector  
 Department of Agriculture, Food and  
 Forestry  
 Agriculture House  
 Dublin 2/Ireland  
 Tel: +353-1-607 2981  
 Fax: +353-1-661 2440

Responsible expert:

Dr Patrick Lenihan  
 Senior Superintending Research Officer  
 Virology Division  
 Central Veterinary Research Laboratory  
 Abbotstown, Blanchardstown  
 Dublin 15

**ITA Italy**

Dr. Franco Mutinelli  
 Istituto Zooprofilattico  
 Sperimentale delle Venezie  
 Viale dell'Università, 10  
 I-35020 Legnaro (PD) /Italy  
 Tel: +39-049-80 84 259  
 Fax: +39-049-80 84 258

E-mail: fmutinelli@izsvenezie.it

**LVA Latvia**

Dr. Mareks Samohvalovs  
 Dr. Emils Jegers  
 Food and Veterinary Service  
 Peldu Street 30,  
 Riga, LV-1050, Latvia  
 Tel: +371 67095230  
 Fax: +371 67322727  
 E-mail: pvd@pvd.gov.lv

**LTU Lithuania**

Dr. K. Lukauskas  
 Dr. V. Kiudulas,  
 Animal Health Department  
 State Food and Veterinary Service  
 Siesikų 19, LT-07170 Vilnius  
 E-mail: vvt@vet.lt  
 vkiudulas@vet.lt

**LUX Luxembourg**

Dr. Arthur Besch, CVO  
 Inspection Vétérinaire  
 Grand-Duché de Luxembourg  
 Administration des Services vétérinaires  
 93, rue d'Anvers  
 Boîte postale 1403  
 L-1014 Luxembourg  
 Tel: +352-478 2539  
 Fax: +352-407 545  
 E-mail: Arthur.Besch@asv.etat.lu

**MKD Macedonia**

Sloboden Cokrevski, DVM  
 Ministry of Agriculture, Forestry and  
 Water Economy  
 Veterinary Directorate  
 Republic of Macedonia  
 Leninova 2  
 1000 Skopje/Macedonia  
 Tel: + 389 2 3210468  
 Fax: + 389 2 3210315  
 E-mail: scokrevski@veterina.gov.mk

Responsible expert:

Prof. Dr. Misho Hristovski  
 Veterinary institute Skopje  
 Department of Biology and Pathology of  
 Fish, Bees and Wild Animals  
 Lazar Pop Trajkov 5-7  
 1000 Skopje/Macedonia  
 Tel: +389 2 3115125  
 Fax: +389 2 3114619  
 E-mail: hristovskim@hotmail.com

**MNE Montenegro**

Mevlida Hrapovic  
 Veterinary administration of the Republic  
 of Montenegro



Bulevar Sv.Petra Cetinjskog br 9  
81000 Podgorica, Montenegro  
Tel: +38 2 81 201 945;  
Fax: +38 2 81 201 946  
e-mail: mevlida.hrapovic@vu.gov.me

#### **MDA Moldova**

Vsevolod Stamati,  
Animal Health Division  
Department of Veterinary Medicine  
Ministry of Agriculture and Food Industry  
Republic of Moldova  
E-mail: dmv@maia.gov.md

#### **NED Netherlands**

Dr. P.W.de Leeuw  
Dutch Ministry of Agriculture, Nature and  
Food  
Bezuidenhoutseweg 73 - P.O. Box 20401  
NL-2500 EK's-Gravenhage /Netherlands

Dr. L. Züchner  
Food en Consumer Product Safety Authority  
De Stoven 22  
NL-7206 AX Zutphen /Netherlands  
Tel: +31-575-58 8 100  
Fax: +31-575-588 8 200  
E-mail: lothar.zuchner@vwa.nl

#### **NOR Norway**

Dr. Keren Bar-Yaacov, CVO  
Norwegian Food Safety Authority, Head  
Office  
P.O. Box 383  
N-2381 Brumunddal, Norway  
Tel: +47 23 21 68 00  
Fax: +47 23 21 68 01  
E-mail: postmottak@mattilsynet.no

#### **POL Poland**

Krzysztof Jazdzewski, DVM  
Acting Chief Veterinary Officer  
General Veterinary Inspectorate  
Veterinary Inspection  
30, Wspolna Str,  
00-930 Warsaw / Poland  
Tel.: +4822623208889  
+4822626288511  
Fax: +48226231408  
E-mail: wet@wetgiw.gov.pl

#### **Responsible experts:**

Prof. Jan. F. Zmudzinski  
National Veterinary Research Institute  
Department of Virology  
National Reference Laboratory for Rabies  
Al. Partyzantow 57  
24 -100 Pulawy / Poland  
Tel.: +48818863051  
Fax: +48818862595

E-mail: jfzmudzi@piwet.pulawy.pl

Magdalena Zietara, DVM  
Animal Health and Welfare Office  
General Veterinary Inspectorate  
Veterinary Inspection  
30, Wspolna Str,  
00-930 Warsaw / Poland  
Tel.: +48226232264  
Fax: +48226231408  
E-mail:  
magdalena.zietara@wetgiw.gov.pl

#### **PRT Portugal**

Dr.C.A.M.de Andrade  
Fontes  
Direccao-Geral da Pecuaria

#### **ROU Romania**

Prof. Gabriel Predoi, CVO  
General Director of the Sanitary  
Veterinary General Direction, National  
Sanitary Veterinary and Food Safety  
Authority  
Bd. Carol I, nr. 24, sector 3  
Bucuresti, cod 70.033 /Romania  
Tel: +40-21-3157875  
Fax: +40-21-3124967  
E-mail: predoi@ansv.ro

#### **RUS Russian Federation (European part)**

Prof. V.A.Vedernikov  
Dr. I.V.Baldina  
The Kovalenko All-Russian  
Inst.of Exper. Veterinary Medicine  
109455, Moscow, Ryazansky prosp., 24  
Tel: +495 377-9483  
Fax: +495 970-0369  
E-Mail: epizootviev@mail.ru

Dr. N.A.Yaremenko  
Dr. S.A.Kolomytzev  
Department of veterinary and livestock  
Ministry of Agriculture  
107139, Moscow, Orlikov per., 1/11  
Tel: +495 975-5423  
Fax: +495 975-5423  
E-mail: n.yaremenko@vet.mcx.ru

#### **Responsible expert:**

Dr Artem Metlin  
Federal Centre for Animal Health,  
600901, Vladimir,Russia.  
Fax +74 922260753  
E-mail artem.metlin@inbox.ru

**SRB Serbia**

Prof. Dr Dušan Lalošević (Director)  
Dr. Nenad Vranješ (Rabies Epidemiology  
and prevention)  
Dr. Srđan Stankov (Rabies laboratory)  
Pasteur Institute Novi Sad  
Hajduk Veljkova 1 / P.O. Box 208  
21000 Novi Sad / Serbia

Tel.: +381 21 6611 003  
+381 21 420 528  
Fax: +381 21 6611 003  
Email: paster-ns@neobee.net

**SVK Slovak Republic**

Prof. Josef Bires, CVO  
Roman Matejcik, DVM  
State Veterinary Administration of the  
Slovak Republic  
Botanická No 17  
842 13 Bratislava /Slovak Republic  
Tel. +421-2-60 257 227  
Fax +421-2-65 411 159  
E-mail welfare@svsrs.sk

Responsible expert:  
Miroslav Mojziš, DVM  
Štátny veterinárny ústav Zvolen  
Pod Dráhami No. 918  
960 86 Zvolen /Slovak Republic

**SVN Slovenia**

Aleš Breclj, MSc, DVM  
Ministry of Agriculture, Forestry and  
Food  
Veterinary Administration of the Republic  
of Slovenia  
Parmova 53, 1000 Ljubljana / SLOVENIA  
Tel: +386-1-300 13 00  
Fax: +386-1-300 13 56  
E-mail: ales.breclj@gov.si  
Web: www.sigov.si/vurs

Responsible expert:  
Peter Hostnik, PhD, DVM  
National Veterinary Institute, Unit for the  
diagnostic of contagious and other  
diseases,  
Laboratory of Virology  
Gerbičeva 60  
1000 Ljubljana / SLOVENIA  
Tel: +386-1-477 91 00  
Fax: +386-1-477 93 52  
E-mail: peter.hostnik@vf.uni-lj.si

**ESP Spain**

Ilmo. Sr. D. Pedro Angel García González  
Subdirector General de Sanidad Exterior  
Tel: +34-91-596 20 38  
Fax: +34-91-596 20 47

E-mail: pgarciag@msc.es  
Sr. D. Carlos Abellán García  
Jefe de Servicio de Veterinaria Oficial  
Tel: +34-91-596 19 34  
Fax: +34-91-596 20 47  
E-mail: cabellan@msc.es

Ministerio de Sanidad y Consumo  
Dirección General de Salud Pública  
Subdirección General de Sanidad  
Exterior  
C/Paseo del Prado, 18-20  
E-28071 Madrid

Responsible expert - Diagnóstico:  
Sr. D. Juan E. Echevarría Mayo  
Servicio de Microbiología Diagnóstica  
Centro Nacional de Microbiología  
Instituto de Salud Carlos III  
Ministerio de Sanidad y Consumo  
Ctra. Majadahonda-Pozuelo s/n  
28220 Majadahonda, Madrid  
Tel: +34-91-509 79 01  
Fax: +34-91-509 79 66  
E-mail: jeecheva@isciii.es

Epidemiología:  
Sra. Da Luisa Pilar Sánchez Serrano  
Centro Nacional de Epidemiología  
Instituto de Salud Carlos III  
Ministerio de Sanidad y Consumo  
C/ Sinesio Delgado, 6  
E-28029 Madrid  
Tel: +34-91-387 78 02  
Fax: +34-91-387 78 16  
E-mail: Isanchez@isciii.es

Dr. Ignacio Sanchez Esteban  
Subdirector General de Sanidad  
Veterinaria  
MAPA  
Ministerio de Agricultura, Pesca y  
Alimentacion  
Madrid /Spain  
Tel: +34-91-347 82 95  
Fax: +34-91-347 82 99  
E-mail: isanchez@mapya.es  
Web: www.mapya.es

Responsible expert:  
D. Fulgencio Garrido Abellan  
Tel: +34-958-44 03 75  
Fax: +34-958-44 12 00  
E-mail: fgarrido@moebius.es

Dña. Teresa Rodríguez-Trenchs  
Tel: +34-91-347 83 4  
Fax: +34-91-347 82 99  
E-mail: trodrigu@mapya.es

**SWE Sweden**

Dr. Leif Denneberg  
National Board of  
Agriculture Department for Animal  
Production and Health  
SE-551 82 Jönköping /Sweden  
Tel: +46-36-15 50 00  
Fax: +46-36-30 81 82  
E-mail: leif.denneberg@sjv.se

## Responsible expert:

Professor Anders Engvall  
National Veterinary Institute  
SE-751 89 Uppsala  
Tel: +46-18-67 40 00  
Fax: +46-18-67 44 45  
E-mail: anders.engvall@sva.se

**CHE Switzerland**

PD Reto Zanoni  
Dr. Urs Breitenmoser  
University of Bern - Swiss Rabies Centre  
Institute of Veterinary Virology  
Länggass Str. 122  
CH-3012 Bern /Switzerland  
Tel: +41-31-631 23 78  
Fax: +41-31-631 25 34  
E-Mail: zanoni@ivv.unibe.ch  
breitenmoser@ivv.unibe.ch  
Web: www.cx.unibe.ch/ivv

**TUR Turkey**

Asso.Prof.Dr. Muzaffer AYDEMİR  
Ministry of Agriculture and Rural Affairs  
General Directorate of Protection and  
Control  
Esat cad. No. 3  
06100 Bakanlıklar, Ankara /Turkey  
Tel: +90-312-41 82 436  
Fax: +90-312-41 78 209

## Responsible expert:

Dr. Orhan Aylan, Chief of Rabies  
Laboratory  
Etlik Central Veterinary Control and  
Research Institute  
06020 Etlik, Ankara /Turkey  
Tel: +90-312-32 60 090 / 154  
Fax: +90-312-32 11 755

**UKR Ukraine**

Dr. P. Verbytskiy  
Ministry of Agrarian Policy  
State Department of Veterinary Medicine  
Khreshchatik 24  
01001 Kiev /Ukraine  
Tel: +380-44-229 12 70  
Fax: +380-44-229 85 45  
E-mail: uzpr@minap.kiev.ua

Dr. Liudmyla Grishok  
Institute of Veterinary Medicine  
Head of Laboratory for Rabies  
Donetskaja Street 30  
Kiev-151 /Ukraine  
Tel: +380-44-243 72 38  
Fax: +380-44-242-69-81  
E-mail: ivm-kiev@akcecc.kiev.ua

Dr. Zoya Trotsenko  
Head of Virology Department  
State Research Institute of Laboratory  
Diagnostics and Veterinary Sanitary  
Expertise  
Donetskaya Street 30  
Kiev-151, Ukraine  
Tel: +380-44-243 37 55  
Fax: +380-44-242-37 55  
E-Mail: biotech@astral.kiev.ua

**UNK United Kingdom**

Mr Nigel Gibbens BVetMed MSc MRCVS,  
CVO  
Mr David Mouat BVM&S MSc MRCVS  
Mr Balazs Toth DrMedVet MRCVS  
Department for Environment, Food and  
Rural Affairs  
Area 5D Nobel House  
17 Smith Square, London SW1P 3JR  
Tel: +44-207-238 6047  
Fax: +44-207-238 5051  
e-mail david.c.mouat@defra.gsi.gov.uk  
balazs.toth@defra.gsi.gov.uk

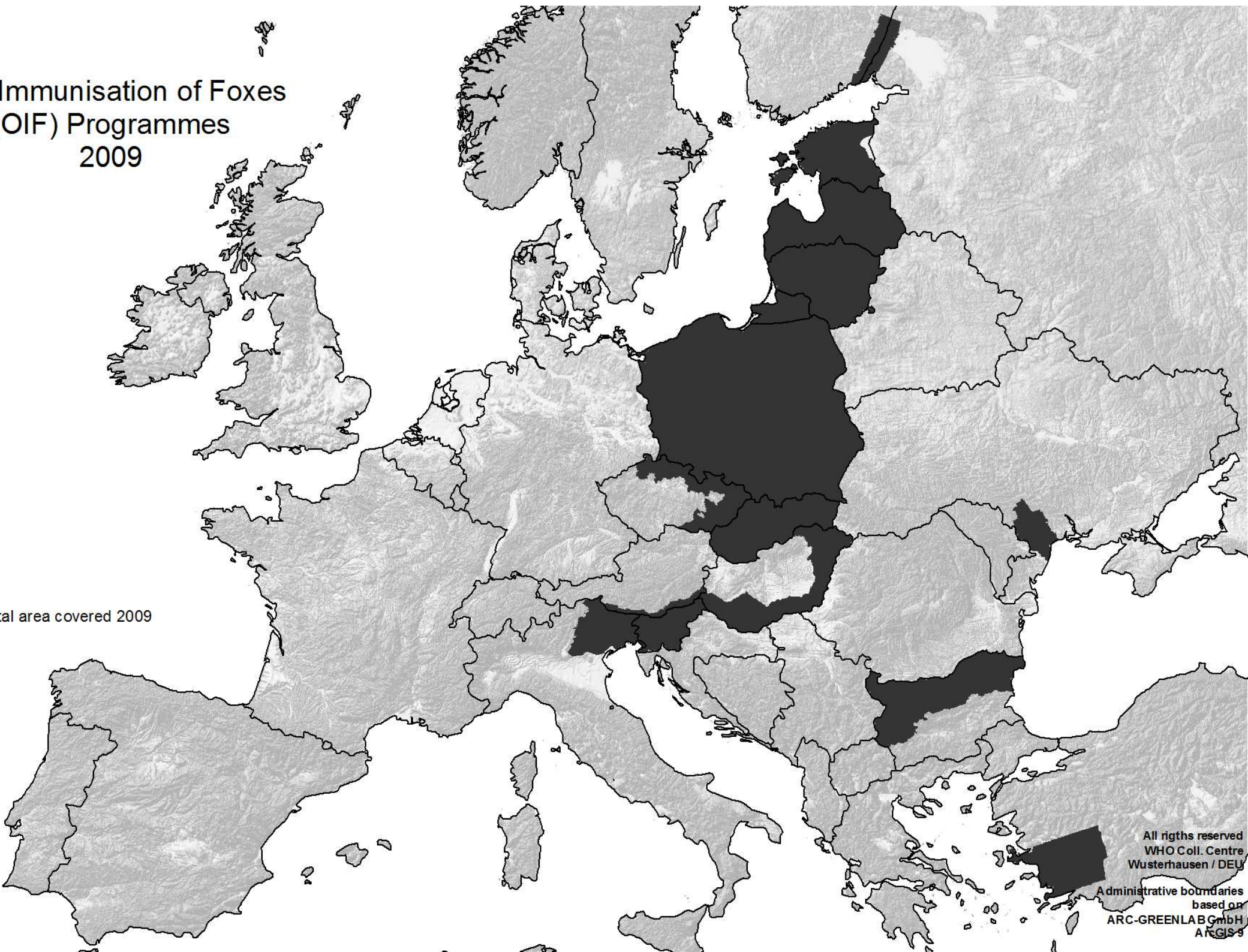
## Responsible expert:

Prof. Anthony R. Fooks  
Rabies Research and Diagnostic Group,  
WHO Collaborating Centre, Department  
of Virology, Veterinary Laboratories  
Agency (Weybridge), New Haw,  
Addlestone, Surrey, KT15 3NB, UK  
Tel: +44 1932-357840  
Fax: +44 1932-357239  
E-Mail: t.fooks@vla.defra.gsi.gov.uk

Please inform the editor about changes  
of contact details

# Oral Immunisation of Foxes (OIF) Programmes 2009

total area covered 2009



All rights reserved  
WHO Coll. Centre  
Wusterhausen / DEU

Administrative boundaries  
based on  
ARC-GREENLAB GmbH  
ArcGIS 9



**RABIES CASES EUROPE**  
**4th QUARTER 2009**  
**2277 CASES REPORTED**

**4 BAT RABIES CASES INCLUDED**  
**6 HUMAN RABIES CASES INCLUDED**

■ rabies free (terrestrial rabies)  
□ no data

200 km

Black Sea

All rights reserved  
WHO Coll. Centre  
Wusterhausen / DEU  
Administrative boundaries  
based on GfK GeoMarketing  
RegioGraph 10.0

