

# RABIES BULLETIN EUROPE

---

Volume 33      No 2      Quarter 2      2009

Published 2009

---

## CONTENTS

1	Editorial	3
2	Summary of rabies cases in Europe	4
3	Miscellaneous Article	
3.1	Rabies exposure due to an illegally imported dog in Germany	5
3.2	Targeted rabies surveillance in wild carnivores in Albania	7
4	Distribution of rabies in Europe	
4.1	Country summaries of rabies cases, 2 <sup>nd</sup> quarter 2009	9
4.2	Rabies cases per country and administrative units, 2 <sup>nd</sup> quarter 2009	10
4.3	Trend tables	
4.3.1	Comparison of the reporting quarter (II/2009) with the previous quarter (I/2009)	16
4.3.2	Comparison of the reporting quarter (II/2009) with the same quarter of the previous year (II/2008)	17
5	List of contributors	18

Map of rabies cases in Europe, 2<sup>nd</sup> quarter 2009

Principal Editor: Conrad Freuling

Associated Editor: Dr. Thomas Müller

Technical Support: Anke Kliemt  
Heike Kubitzka

Contact: WHO Collaborating Centre for Rabies Surveillance and Research  
Institute of Epidemiology, Friedrich-Loeffler-Institute  
- Federal Research Institute for Animal Health -  
Seestr. 55, D-16868 Wusterhausen, Germany  
tel: ..49 33979 80186  
fax: ..49 33979 80200  
email: who-rabies@fli.bund.de

Print: Fine Cards & Papers Limited & Co. KG  
Bernhard und Georg Zerbe  
Kinzigstraße 18  
10247 Berlin  
tel: .. 49 30 612 10 85  
fax: .. 49 30 618 30 33  
email: finecards@t-online.de

ISSN 0257-8506

The Rabies Bulletin Europe is also available online: [www.who-rabies-bulletin.org](http://www.who-rabies-bulletin.org).

## **Acknowledgements**

The Rabies Bulletin Europe is sponsored by the:

World Health Organization, Geneva  
World Organisation for Animal Health (OIE), Paris

Gratefully acknowledged is the financial support of the WHO Collaborating Centre by the

Bundesministerium für Gesundheit und Soziale Sicherung and by the  
Bundesministerium für Ernährung, Landwirtschaft und Verbraucherschutz,  
Germany

# 1. Editorial

---

The rabies situation in many countries in Europe is reflected by either being rabies free or by increasing efforts to eliminate fox mediated rabies. A keystone in the prevention of rabies (re) introduction has been the EU regulation (EC) 998/2003 for the movement of pets within and outside the EU. This is demonstrated by the fact, that none of the imported animals that tested rabies positive fulfilled the requirements of this regulation, thus were illegally imported. In this issue we provide a miscellaneous article covering such imported case in Germany. The second article was provided by Albanian colleagues describing their surveillance efforts to detect rabies in wildlife in Albania. Also, all rabies cases reported to the WHO Rabies Bulletin Europe are displayed in tables and a map.

Conrad Freuling  
Thomas Müller

## 2. SUMMARY OF RABIES CASES IN EUROPE

RABIES CASES

2nd QUARTER 2009

01.04.09-30.06.09

Name	Code	Total	Wildlife	Domestic animals	Bats	Human
ALBANIA	ALB	0	0	0	0	0
AUSTRIA	AUT	0	0	0	0	0
BELARUS	BLR	200	128	72	0	0
BELGIUM	BEL	0	0	0	0	0
BOSNIA - HERCEGOVINA	BIH	5	4	1	0	0
BULGARIA	BGR	17	12	5	0	0
CROATIA	HRV	122	112	10	0	0
CYPRUS	CYP	0	0	0	0	0
CZECH REPUBLIC	CZH	0	0	0	0	0
DENMARK	DNK	0	0	0	0	0
ESTONIA	EST	2	2	0	0	0
FINLAND	FIN	0	0	0	0	0
FRANCE	FRA**	5	0	1	4	0
GERMANY	DEU	0	0	0	0	0
GREECE	GRC	0	0	0	0	0
HUNGARY	HUN	0	0	0	0	0
ICELAND	ISL	0	0	0	0	0
IRELAND	IRE	0	0	0	0	0
ITALY	ITA	5	4	1	0	0
LATVIA	LVA	21	16	5	0	0
LITHUANIA	LTU	14	11	3	0	0
LUXEMBOURG	LUX	0	0	0	0	0
MACEDONIA	MKD	0	0	0	0	0
MALTA	MLT	0	0	0	0	0
MOLDOVA	MDA	3	0	3	0	0
MONTENEGRO	MNE	18	16	2	0	0
NETHERLANDS	NED	4	0	0	4	0
NORWAY	NOR	0	0	0	0	0
POLAND	POL	4	3	0	1	0
PORTUGAL	PRT	0	0	0	0	0
ROMANIA	ROU	88	61	27	0	0
RUSSIAN FEDERATION	RUS	557	321	231	1	4
SERBIA	SRB	45	32	13	0	0
SLOVAK REPUBLIC	SVK	0	0	0	0	0
SLOVENIA	SVN	7	7	0	0	0
SPAIN	ESP	4	0	3	1	0
SWEDEN	SWE	0	0	0	0	0
SWITZERLAND + LIEC.	CHE	0	0	0	0	0
TURKEY	TUR*	0			0	0
UKRAINE	UKR	147	47	100	0	0
UNITED KINGDOM	UNK	0	0	0	0	0
<b>TOTAL</b>		<b>1268</b>	<b>776</b>	<b>477</b>	<b>11</b>	<b>4</b>

Wildlife: excluding bats

\* no data

\*\* dog imported from Afghanistan

# 3. Miscellaneous Articles

---

## 3. 1 Rabies exposure due to an illegally imported dog in Germany

Weiß, B.<sup>1</sup>, U. Hoffmann<sup>2</sup>, C. Freuling<sup>3</sup>, T. Müller<sup>3</sup>, M. Fessler<sup>4</sup> and C. Renner<sup>5</sup>

<sup>1</sup>Dept. for infection epidemiology, Robert Koch-Institut, Berlin

<sup>2</sup>Public health authority, Lörrach district, Germany

<sup>3</sup>National reference laboratory for rabies, Friedrich-Loeffler-Institut, Germany

<sup>4</sup>Veterinary authority, Lörrach district, Germany

<sup>5</sup>State veterinary authority, Ministry of Nutrition and Rural Affairs, Stuttgart, Germany

On December 29th 2008 a mixed-bred dog was euthanized in a private veterinary clinic in Lörrach, Baden-Württemberg, Germany, because of clinical signs suggestive of rabies. Rabies virus antigen in the brain was detected by fluorescent antibody test (FAT) at the regional veterinary laboratory on the same day.

Tracing-onward investigations were initiated and the preliminary assertion of the owner that the dog was always leashed when outside the owner's garden was later revoked. Therefore, many possibilities for human and animal contacts were given and this fact necessitated thorough epidemiological investigations by the local veterinary and public health authorities. A press release was issued to inform the public of the rabies case and the possibility for post exposure prophylaxis (PEP) if necessary. All humans and animals with potential contact to the rabid dog within 14 day prior to death were investigated by various routes. The local newspapers published a picture of the dog, and information was circulated by email to all general practitioners in the region.

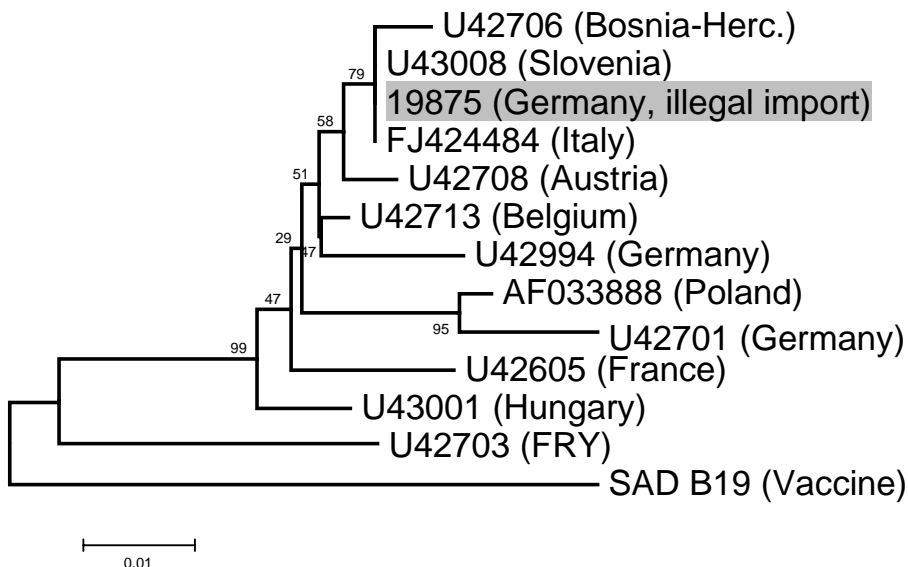
Also, a joint hotline from veterinary and human public health authorities was established to answer the many questions arising from this case and the respective control measures.

Because of the close proximity to the Swiss and French borders, the Robert-Koch-Institute issued a notice to the European Early Warning and Response System (EWRS).

A total of 27 human contacts were identified as requiring PEP due to possible exposure, of which 9 received active and passive immunisation simultaneously. Seven animals with possible contacts to the case were put under quarantine or observation depending on the vaccination status of the animal. During the following months no further rabies cases were reported. Tracing back revealed that the dog was born in June 2008 in Croatia and was taken from an animal shelter to Germany at the age of six weeks. The juvenile dog was vaccinated against distemper, hepatitis and leptospirosis. Rabies vaccination was not administered. According to the owner, there was no custom control at the EU-border. The dog developed initial clinical signs including anxiety and hydrophobia two days prior to death. Since Germany is free from terrestrial rabies (OIE) and rabies is endemic in Croatia with more than 800 cases reported to the WHO Collaboration Centre for Rabies Surveillance and Research, it was assumed that infection had occurred in Croatia. This was confirmed by sequence analysis at the national

reference laboratory for rabies, Friedrich-Loeffler-Institute, revealing 100% sequence identity in the partial N-gene (400 bp) with other sequences from the Western Balkan (Figure 1). A long incubation period as reported

case, the dog was illegally imported into the EU. This case illustrates that in areas with a rabies free status, permanent disease awareness is nonetheless necessary to allow early detection and avoid further spread.



**Figure 1: Phylogenetic tree of European RABV-N-gene (400bp) sequences. The position of the isolate from the illegally imported dog is indicated (shaded)**

here is within the range of data from literature and taken together, the evidence is overwhelming that the dog was infected in Croatia. According to Regulation (EC) No 998/2003, prerequisites for entering the EU with a pet are registration and vaccination of the animals against rabies. As importation of unvaccinated dogs younger than 3 month is subject to further conditions that were not met in this

Risk communication by using various media (newspaper, email) in the early stage of investigations was essential, particularly to reach individuals potential exposure to the rabies virus. Also, continuous data exchange between public health authorities guaranteed effective disease control and prevention.

### 3.2 Targeted rabies surveillance in wild carnivores in Albania

Korro, K.\*, K. Berxholi\*, L. Klima\*, R. Keci\*, Qafmolla, L.°, B. Bizhga °,

Agricultural University of Tirana, \*Faculty of Veterinary Medicine, °Institute of Veterinary and Food studies

Albania is a small country on the Balkan peninsula surrounded by Montenegro in the North, by Kosovo and the former Yugoslav Republic of Macedonia in the West and by Greece in the South. Between 1976 and 2001 Albania was considered rabies free, although the number of reported rabies cases had already increased in neighbouring countries in the North. Eventually, rabies reoccurred in Albania in March 2001 in the village Morina, in the Kukes district, affecting a domestic dog. The dog was probably bitten by a wildlife reservoir species. As a consequence, a study was initiated for the surveillance of rabies in wild carnivores in northern Albania. During this study samples were tested using the fluorescent antibody test and the mouse inoculation test. During 2002, 65

samples from wild carnivores were examined (Figure 1). In November 2002 a red fox (*Vulpes vulpes*) from Qereti village (Puka district) in northern Albania (Figure 1) was diagnosed rabies positive. During 2003, further two foxes were found positive near Gjorica (Bulqiza district). In May 2004, two wolves from an area near the village of Helshan, Zahrishte in the Has district (northern Albania) tested rabies positive. In 2006, one fox tested positive, and this coincided with a supposed outbreak in Nikoliq (Has district) were a suspect case of rabies occurred in a cow. Except for the former Yugoslav Republic of Macedonia in the West and Greece in the South all other neighboring countries have reported rabies cases in recent years (Figure 2). It is presumed that wildlife rabies in

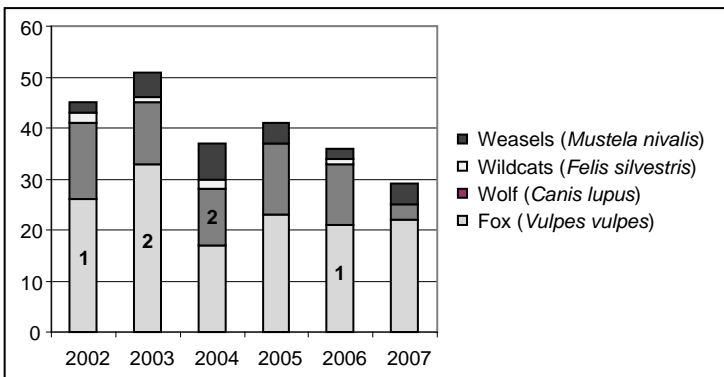


Figure 1: Numbers of animals tested per species and year and rabies positives

the Balkan region is fox mediated with spillover infections occurring into other wild animals including



**Figure 2: Rabies cases in Albania and in surrounding countries during recent years (2001-2008)**

wolves and jackals. Although no jackal have been found positive, it is likely that this species could also maintain an independent transmission cycle given a certain population density exists.

Since there is no geographical border to rabies endemic regions in the North and West it is in all probability that migrating wild carnivores enter the area of Albania and also Kosovo and Macedonia, and cause rabies in wild and domestic animals as has been shown for other regions of the Balkan. The reasons why the epidemic wave of fox-mediated rabies has not spread further south on the Balkan peninsula remain elusive. A similar halt as seen in this part of the Balkan was also recognized in the western spread in France. However, vigilance and adequate surveillance should be established to detect any further southward spread of the disease.

#### Conclusions

This is the first study of its kind into rabies in wild carnivores in Albania. Despite the fact that the study was prompted by the emergency situation of rabies in the surrounding countries, it provides some background information and paves the way for other studies.

The sporadic cases of rabies in northern Albania seem a result of the circulation of rabies among wildlife reservoir species in neighboring countries and their migration into Albania. Thus far, it seems that these are isolated cases; however a continuation of enhanced surveillance in those areas is necessary to allow epidemiological interventions such as oral rabies vaccination.



## 4 DISTRIBUTION OF RABIES IN EUROPE

### 4.1 Country summaries of rabies cases, 2nd quarter 2009

01.04.09-30.06.09

Country		Domestic animals									Wildlife											bat	Human cases		total		
		dog	cat	cattle	equine	goat sheep	pig	stray dog	other	subtotal	fox	raccoon dog	raccoon	wolf	badger	marten	other mustelids	other carnivores	wild boar	roe deer	red deer		fallow deer	other		subtotal	
Name	Code																										
Albania	ALB									0														0			0
Austria	AUT									0														0			0
Belarus	BLR	29	15	24	4					72	105	9					10						4	128			200
Belgium	BEL									0														0			0
Bosnia - Hercegovina	BIH			1						1	4													4			5
Bulgaria	BGR	2	1			2				5	12													12			17
Croatia	HRV	5	4	1						10	110									2				112			122
Cyprus	CYP									0														0			0
Czech Republic	CZH									0														0			0
Denmark	DNK									0														0			0
Estonia	EST									0	2													2			2
Finland	FIN									0														0			0
France	FRA	1								1														0	4		5
Germany	DEU									0														0			0
Greece	GRC									0														0			0
Hungary	HUN									0														0			0
Iceland	ISL									0														0			0
Ireland	IRE									0														0			0
Italy	ITA	1								1	4													4			5
Latvia	LVA	5								5	5	9			2									16			21
Lithuania	LTU	2		1						3	4	7												11			14
Luxembourg	LUX									0														0			0
Macedonia	MKD									0														0			0
Malta	MLT									0														0			0
Moldova	MDA	1		1					1	3														0			3
Montenegro	MNE			2						2	14			1	1									16			18
Norway	NOR									0														0			0
Poland	POL									0	3													3	1		4
Portugal	PRT									0														0			0
Romania	ROU	10	9	6	1	1				27	59			1	1									61			88
Russian Federation	RUS	114	52	46	2	13	1	2	1	231	275	39		2		2	1		1				1	321	1	4	557
Serbia	SRB	6	5					2		13	30					1	1							32			45
Slovak Republic	SVK									0														0			0
Slovenia	SVN									0	7													7			7
Spain	ESP	3								3														0	1		4
Sweden	SWE									0														0			0
Switzerland + Lichtenstein	CHE									0														0			0
The Netherlands	NED									0														0	4		4
Turkey	TUR									0														0			0
Ukraine	UKR	35	53	10	1	1				100	41				5								1	47			147
United Kingdom	UNK									0														0			0
<b>TOTAL</b>		<b>214</b>	<b>139</b>	<b>92</b>	<b>8</b>	<b>17</b>	<b>3</b>	<b>2</b>	<b>2</b>	<b>477</b>	<b>675</b>	<b>64</b>	<b>0</b>	<b>4</b>	<b>4</b>	<b>8</b>	<b>11</b>	<b>1</b>	<b>1</b>	<b>2</b>	<b>0</b>	<b>0</b>	<b>6</b>	<b>776</b>	<b>11</b>	<b>4</b>	<b>1268</b>
<b>PER CENT</b>		<b>16.9%</b>	<b>11.0%</b>	<b>7.3%</b>	<b>0.6%</b>	<b>1.3%</b>	<b>0.2%</b>	<b>0.2%</b>	<b>0.2%</b>	<b>37.6%</b>	<b>53.2%</b>	<b>5.0%</b>	<b>0.0%</b>	<b>0.3%</b>	<b>0.3%</b>	<b>0.6%</b>	<b>0.9%</b>	<b>0.1%</b>	<b>0.1%</b>	<b>0.2%</b>	<b>0.0%</b>	<b>0.0%</b>	<b>0.5%</b>	<b>61.2%</b>	<b>0.9%</b>	<b>0.3%</b>	<b>100%</b>

\* NO CASES

\*\* NO DATA

\*\*\* dog imported from Afghanistan

## 4.2 Rabies cases per country and administrative units, 2nd quarter 2009

01.04.09-30.06.09

Location	Domestic animals										Wildlife											bat	Human cases	total		
	dog	cat	cattle	equine	goat sheep	pig	stray dog	other	subtotal	fox	raccoon dog	raccoon	wolf	badger	marten	other mustelides	other carnivores	wild boar	roe deer	red deer	fallow deer				other	subtotal
<b>BELARUS</b>																										
Brest	2	2	2						6	11	1					3							15			21
Gomel	7	8	9	1					25	9						1						2				37
Grodno	3	2	3	1					9	33	1					4										47
Minsk	9	3	4						16	21	1					2										40
Mogilev	1		3						4	11	1											1				17
Vitebsk	7		3	2					12	20	5											1				38
<b>TOTAL</b>	<b>29</b>	<b>15</b>	<b>24</b>	<b>4</b>	<b>0</b>	<b>0</b>	<b>0</b>	<b>0</b>	<b>72</b>	<b>105</b>	<b>9</b>	<b>0</b>	<b>0</b>	<b>0</b>	<b>0</b>	<b>10</b>	<b>0</b>	<b>0</b>	<b>0</b>	<b>0</b>	<b>0</b>	<b>4</b>	<b>128</b>	<b>0</b>	<b>0</b>	<b>200</b>
<b>PER CENT</b>	<b>14.5%</b>	<b>7.5%</b>	<b>12.0%</b>	<b>2.0%</b>	<b>0.0%</b>	<b>0.0%</b>	<b>0.0%</b>	<b>0.0%</b>	<b>36.0%</b>	<b>52.5%</b>	<b>4.5%</b>	<b>0.0%</b>	<b>0.0%</b>	<b>0.0%</b>	<b>0.0%</b>	<b>5.0%</b>	<b>0.0%</b>	<b>0.0%</b>	<b>0.0%</b>	<b>0.0%</b>	<b>0.0%</b>	<b>2.0%</b>	<b>64.0%</b>	<b>0.0%</b>	<b>0.0%</b>	<b>100%</b>
<b>BOSNIA - HERCEGOVINA</b>																										
Bosansko-podrinjski									0	1													1			1
Sarajevo									0	1													1			1
Sokolac									0	1													1			1
Unsko-sanski			1						1	1													0			1
Zapadnohercegovacki									0	1													0			1
<b>TOTAL</b>	<b>0</b>	<b>0</b>	<b>1</b>	<b>0</b>	<b>0</b>	<b>0</b>	<b>0</b>	<b>0</b>	<b>1</b>	<b>4</b>	<b>0</b>	<b>0</b>	<b>0</b>	<b>0</b>	<b>0</b>	<b>0</b>	<b>0</b>	<b>0</b>	<b>0</b>	<b>0</b>	<b>0</b>	<b>0</b>	<b>4</b>	<b>0</b>	<b>0</b>	<b>5</b>
<b>PER CENT</b>	<b>0.0%</b>	<b>0.0%</b>	<b>20.0%</b>	<b>0.0%</b>	<b>0.0%</b>	<b>0.0%</b>	<b>0.0%</b>	<b>0.0%</b>	<b>20.0%</b>	<b>80.0%</b>	<b>0.0%</b>	<b>0.0%</b>	<b>0.0%</b>	<b>0.0%</b>	<b>0.0%</b>	<b>0.0%</b>	<b>0.0%</b>	<b>0.0%</b>	<b>0.0%</b>	<b>0.0%</b>	<b>0.0%</b>	<b>0.0%</b>	<b>80.0%</b>	<b>0.0%</b>	<b>0.0%</b>	<b>100%</b>
<b>BULGARIA</b>																										
Burgas	1								1														0			1
Kyustendil									0	1													1			1
Montana									0	3													3			3
Razgrad	1	1							2														0			2
Shumen					2				2	4													4			6
Targovishte									0	1													1			1
Vidin									0	2													2			2
Vratsa									0	1													1			1
<b>TOTAL</b>	<b>2</b>	<b>1</b>	<b>0</b>	<b>0</b>	<b>2</b>	<b>0</b>	<b>0</b>	<b>0</b>	<b>5</b>	<b>12</b>	<b>0</b>	<b>0</b>	<b>0</b>	<b>0</b>	<b>0</b>	<b>0</b>	<b>0</b>	<b>0</b>	<b>0</b>	<b>0</b>	<b>0</b>	<b>0</b>	<b>12</b>	<b>0</b>	<b>0</b>	<b>17</b>
<b>PER CENT</b>	<b>11.8%</b>	<b>5.9%</b>	<b>0.0%</b>	<b>0.0%</b>	<b>11.8%</b>	<b>0.0%</b>	<b>0.0%</b>	<b>0.0%</b>	<b>29.4%</b>	<b>70.6%</b>	<b>0.0%</b>	<b>0.0%</b>	<b>0.0%</b>	<b>0.0%</b>	<b>0.0%</b>	<b>0.0%</b>	<b>0.0%</b>	<b>0.0%</b>	<b>0.0%</b>	<b>0.0%</b>	<b>0.0%</b>	<b>0.0%</b>	<b>70.6%</b>	<b>0.0%</b>	<b>0.0%</b>	<b>100%</b>
<b>ESTONIA</b>																										
Põlva									0	1													1			1
Võru									0	1													1			1
<b>TOTAL</b>	<b>0</b>	<b>0</b>	<b>0</b>	<b>0</b>	<b>0</b>	<b>0</b>	<b>0</b>	<b>0</b>	<b>0</b>	<b>2</b>	<b>0</b>	<b>0</b>	<b>0</b>	<b>0</b>	<b>0</b>	<b>0</b>	<b>0</b>	<b>0</b>	<b>0</b>	<b>0</b>	<b>0</b>	<b>0</b>	<b>2</b>	<b>0</b>	<b>0</b>	<b>2</b>
<b>PER CENT</b>	<b>0.0%</b>	<b>0.0%</b>	<b>0.0%</b>	<b>0.0%</b>	<b>0.0%</b>	<b>0.0%</b>	<b>0.0%</b>	<b>0.0%</b>	<b>0.0%</b>	<b>100.0%</b>	<b>0.0%</b>	<b>0.0%</b>	<b>0.0%</b>	<b>0.0%</b>	<b>0.0%</b>	<b>0.0%</b>	<b>0.0%</b>	<b>0.0%</b>	<b>0.0%</b>	<b>0.0%</b>	<b>0.0%</b>	<b>0.0%</b>	<b>100.0%</b>	<b>0.0%</b>	<b>0.0%</b>	<b>100%</b>
<b>FRANCE</b>																										
* no region specified	1								1														0			1
Lorraine									0														0	4		4
<b>TOTAL</b>	<b>1</b>	<b>0</b>	<b>0</b>	<b>0</b>	<b>0</b>	<b>0</b>	<b>0</b>	<b>0</b>	<b>1</b>	<b>0</b>	<b>0</b>	<b>0</b>	<b>0</b>	<b>0</b>	<b>0</b>	<b>0</b>	<b>0</b>	<b>0</b>	<b>0</b>	<b>0</b>	<b>0</b>	<b>0</b>	<b>0</b>	<b>4</b>	<b>0</b>	<b>5</b>
<b>PER CENT</b>	<b>20.0%</b>	<b>0.0%</b>	<b>0.0%</b>	<b>0.0%</b>	<b>0.0%</b>	<b>0.0%</b>	<b>0.0%</b>	<b>0.0%</b>	<b>20.0%</b>	<b>0.0%</b>	<b>0.0%</b>	<b>0.0%</b>	<b>0.0%</b>	<b>0.0%</b>	<b>0.0%</b>	<b>0.0%</b>	<b>0.0%</b>	<b>0.0%</b>	<b>0.0%</b>	<b>0.0%</b>	<b>0.0%</b>	<b>0.0%</b>	<b>0.0%</b>	<b>80.0%</b>	<b>0.0%</b>	<b>100%</b>

\* dog imported from Afghanistan

## 4.2 Rabies cases per country and administrative units, 2nd quarter 2009

01.04.09-30.06.09

Location	Domestic animals										Wildlife											bat	Human cases	total		
	dog	cat	cattle	equine	goat sheep	pig	stray dog	other	subtotal	fox	raccoon dog	raccoon	wolf	badger	marten	other mustelides	other carnivores	wild boar	roe deer	red deer	fallow deer				other	subtotal
<b>CROATIA</b>																										
Bjelovarsko - Bilogorska									0	10													10			10
Istarska									0	11													11			11
Karlovacka	1	1							2	13									1				14			16
Koprivniško - Krizevaska	1								1	7													7			8
Krapinsko - Zagorska									0	6													6			6
Licko - Senjska									0	5													5			5
Medimurska									0	1													1			1
Pozesko - Slovanska	1	1							2	2													2			4
Primorsko - Goranska									0	11									1				12			12
Sibensko - Kninska									0	4													4			4
Sisacko - Moslovačka	1	1							2	6													6			8
Splitsko - Dalmatinska									0	1													1			1
Varaždinska									0	4													4			4
Vukovarsko - Srijemska									0	2													2			2
Zadarska			1						1	1													1			2
Zagreb									0	6													6			6
Zagrebacka	1	1							2	20													20			22
<b>TOTAL</b>	<b>5</b>	<b>4</b>	<b>1</b>	<b>0</b>	<b>0</b>	<b>0</b>	<b>0</b>	<b>0</b>	<b>10</b>	<b>110</b>	<b>0</b>	<b>0</b>	<b>0</b>	<b>0</b>	<b>0</b>	<b>0</b>	<b>0</b>	<b>0</b>	<b>2</b>	<b>0</b>	<b>0</b>	<b>0</b>	<b>112</b>	<b>0</b>	<b>0</b>	<b>122</b>
<b>PER CENT</b>	<b>4.1%</b>	<b>3.3%</b>	<b>0.8%</b>	<b>0.0%</b>	<b>0.0%</b>	<b>0.0%</b>	<b>0.0%</b>	<b>0.0%</b>	<b>8.2%</b>	<b>90.2%</b>	<b>0.0%</b>	<b>0.0%</b>	<b>0.0%</b>	<b>0.0%</b>	<b>0.0%</b>	<b>0.0%</b>	<b>0.0%</b>	<b>0.0%</b>	<b>1.6%</b>	<b>0.0%</b>	<b>0.0%</b>	<b>0.0%</b>	<b>91.8%</b>	<b>0.0%</b>	<b>0.0%</b>	<b>100%</b>
<b>ITALY</b>																										
Udine	1								1	4													4			5
<b>TOTAL</b>	<b>1</b>	<b>0</b>	<b>0</b>	<b>0</b>	<b>0</b>	<b>0</b>	<b>0</b>	<b>0</b>	<b>1</b>	<b>4</b>	<b>0</b>	<b>0</b>	<b>0</b>	<b>0</b>	<b>0</b>	<b>0</b>	<b>0</b>	<b>0</b>	<b>0</b>	<b>0</b>	<b>0</b>	<b>0</b>	<b>4</b>	<b>0</b>	<b>0</b>	<b>5</b>
<b>PER CENT</b>	<b>20.0%</b>	<b>0.0%</b>	<b>0.0%</b>	<b>0.0%</b>	<b>0.0%</b>	<b>0.0%</b>	<b>0.0%</b>	<b>0.0%</b>	<b>20.0%</b>	<b>80.0%</b>	<b>0.0%</b>	<b>0.0%</b>	<b>0.0%</b>	<b>0.0%</b>	<b>0.0%</b>	<b>0.0%</b>	<b>0.0%</b>	<b>0.0%</b>	<b>0.0%</b>	<b>0.0%</b>	<b>0.0%</b>	<b>0.0%</b>	<b>80.0%</b>	<b>0.0%</b>	<b>0.0%</b>	<b>100%</b>
<b>LATVIA</b>																										
Daugavpils r.	2								2	1													1			3
Dobeles r.									0	1	3												4			4
Jelgavas r.	1								1														0			1
Kuldigas r.									0	1													1			1
Ogres r.									0		1												1			1
Rezeknes r.									0	1													1			1
Saldus r.									0		2			1									3			3
Talsu r.									0	1				1									2			2
Tukuma r.	2								2		3												3			5
<b>TOTAL</b>	<b>5</b>	<b>0</b>	<b>0</b>	<b>0</b>	<b>0</b>	<b>0</b>	<b>0</b>	<b>0</b>	<b>5</b>	<b>5</b>	<b>9</b>	<b>0</b>	<b>0</b>	<b>2</b>	<b>0</b>	<b>0</b>	<b>0</b>	<b>0</b>	<b>0</b>	<b>0</b>	<b>0</b>	<b>0</b>	<b>16</b>	<b>0</b>	<b>0</b>	<b>21</b>
<b>PER CENT</b>	<b>23.8%</b>	<b>0.0%</b>	<b>0.0%</b>	<b>0.0%</b>	<b>0.0%</b>	<b>0.0%</b>	<b>0.0%</b>	<b>0.0%</b>	<b>23.8%</b>	<b>23.8%</b>	<b>42.9%</b>	<b>0.0%</b>	<b>0.0%</b>	<b>9.5%</b>	<b>0.0%</b>	<b>0.0%</b>	<b>0.0%</b>	<b>0.0%</b>	<b>0.0%</b>	<b>0.0%</b>	<b>0.0%</b>	<b>0.0%</b>	<b>76.2%</b>	<b>0.0%</b>	<b>0.0%</b>	<b>100%</b>

## 4.2 Rabies cases per country and administrative units, 2nd quarter 2009

01.04.09-30.06.09

Location	Domestic animals										Wildlife										bat	Human cases	total		
	dog	cat	cattle	equine	goat sheep	pig	stray dog	other	subtotal	fox	raccoon dog	raccoon	wolf	badger	marten	other mustelides	other carnivores	wild boar	roe deer	red deer				fallow deer	other
<b>LITHUANIA</b>																									
Alytaus			1					0	2														2		2
Panevezio	2							3	1	1													2		5
Utenos								0	1	2													3		3
Vilniaus								0		4													4		4
<b>TOTAL</b>	<b>2</b>	<b>0</b>	<b>1</b>	<b>0</b>	<b>0</b>	<b>0</b>	<b>0</b>	<b>3</b>	<b>4</b>	<b>7</b>	<b>0</b>	<b>0</b>	<b>0</b>	<b>0</b>	<b>0</b>	<b>0</b>	<b>0</b>	<b>0</b>	<b>0</b>	<b>0</b>	<b>0</b>	<b>11</b>	<b>0</b>	<b>0</b>	<b>14</b>
<b>PER CENT</b>	<b>14,3%</b>	<b>0,0%</b>	<b>7,1%</b>	<b>0,0%</b>	<b>0,0%</b>	<b>0,0%</b>	<b>0,0%</b>	<b>21,4%</b>	<b>28,6%</b>	<b>50,0%</b>	<b>0,0%</b>	<b>0,0%</b>	<b>0,0%</b>	<b>0,0%</b>	<b>0,0%</b>	<b>0,0%</b>	<b>0,0%</b>	<b>0,0%</b>	<b>0,0%</b>	<b>0,0%</b>	<b>0,0%</b>	<b>78,6%</b>	<b>0,0%</b>	<b>0,0%</b>	<b>100%</b>
<b>MONTENEGRO</b>																									
Montenegro			2					2	14			1	1										16		18
<b>TOTAL</b>	<b>0</b>	<b>0</b>	<b>2</b>	<b>0</b>	<b>0</b>	<b>0</b>	<b>0</b>	<b>2</b>	<b>14</b>	<b>0</b>	<b>0</b>	<b>1</b>	<b>1</b>	<b>0</b>	<b>0</b>	<b>0</b>	<b>0</b>	<b>0</b>	<b>0</b>	<b>0</b>	<b>0</b>	<b>0</b>	<b>16</b>	<b>0</b>	<b>18</b>
<b>PER CENT</b>	<b>0,0%</b>	<b>0,0%</b>	<b>11,1%</b>	<b>0,0%</b>	<b>0,0%</b>	<b>0,0%</b>	<b>0,0%</b>	<b>11,1%</b>	<b>77,8%</b>	<b>0,0%</b>	<b>0,0%</b>	<b>5,6%</b>	<b>5,6%</b>	<b>0,0%</b>	<b>0,0%</b>	<b>0,0%</b>	<b>0,0%</b>	<b>0,0%</b>	<b>0,0%</b>	<b>0,0%</b>	<b>0,0%</b>	<b>88,9%</b>	<b>0,0%</b>	<b>0,0%</b>	<b>100%</b>
<b>MOLDOVA</b>																									
Moldova	1		1				1	3														0			3
<b>TOTAL</b>	<b>1</b>	<b>0</b>	<b>1</b>	<b>0</b>	<b>0</b>	<b>0</b>	<b>1</b>	<b>3</b>	<b>0</b>	<b>0</b>	<b>0</b>	<b>0</b>	<b>0</b>	<b>0</b>	<b>0</b>	<b>0</b>	<b>0</b>	<b>0</b>	<b>0</b>	<b>0</b>	<b>0</b>	<b>0</b>	<b>0</b>	<b>0</b>	<b>3</b>
<b>PER CENT</b>	<b>33,3%</b>	<b>0,0%</b>	<b>33,3%</b>	<b>0,0%</b>	<b>0,0%</b>	<b>0,0%</b>	<b>33,3%</b>	<b>100,0%</b>	<b>0,0%</b>	<b>0,0%</b>	<b>0,0%</b>	<b>0,0%</b>	<b>0,0%</b>	<b>0,0%</b>	<b>0,0%</b>	<b>0,0%</b>	<b>0,0%</b>	<b>0,0%</b>	<b>0,0%</b>	<b>0,0%</b>	<b>0,0%</b>	<b>0,0%</b>	<b>0,0%</b>	<b>0,0%</b>	<b>100%</b>
<b>POLAND</b>																									
Lubelskie								0															0	1	1
Podkarpackie								0	2														2		2
Podlaskie								0	1														1		1
<b>TOTAL</b>	<b>0</b>	<b>0</b>	<b>0</b>	<b>0</b>	<b>0</b>	<b>0</b>	<b>0</b>	<b>0</b>	<b>3</b>	<b>0</b>	<b>0</b>	<b>0</b>	<b>0</b>	<b>0</b>	<b>0</b>	<b>0</b>	<b>0</b>	<b>0</b>	<b>0</b>	<b>0</b>	<b>0</b>	<b>3</b>	<b>1</b>	<b>0</b>	<b>4</b>
<b>PER CENT</b>	<b>0,0%</b>	<b>0,0%</b>	<b>0,0%</b>	<b>0,0%</b>	<b>0,0%</b>	<b>0,0%</b>	<b>0,0%</b>	<b>0,0%</b>	<b>75,0%</b>	<b>0,0%</b>	<b>0,0%</b>	<b>0,0%</b>	<b>0,0%</b>	<b>0,0%</b>	<b>0,0%</b>	<b>0,0%</b>	<b>0,0%</b>	<b>0,0%</b>	<b>0,0%</b>	<b>0,0%</b>	<b>0,0%</b>	<b>75,0%</b>	<b>25,0%</b>	<b>0,0%</b>	<b>100%</b>
<b>SPAIN</b>																									
Melilla	3							3															0		3
Badajoz								0															0	1	1
<b>TOTAL</b>	<b>3</b>	<b>0</b>	<b>0</b>	<b>0</b>	<b>0</b>	<b>0</b>	<b>0</b>	<b>3</b>	<b>0</b>	<b>0</b>	<b>0</b>	<b>0</b>	<b>0</b>	<b>0</b>	<b>0</b>	<b>0</b>	<b>0</b>	<b>0</b>	<b>0</b>	<b>0</b>	<b>0</b>	<b>0</b>	<b>1</b>	<b>0</b>	<b>4</b>
<b>PER CENT</b>	<b>75,0%</b>	<b>0,0%</b>	<b>0,0%</b>	<b>0,0%</b>	<b>0,0%</b>	<b>0,0%</b>	<b>0,0%</b>	<b>75,0%</b>	<b>0,0%</b>	<b>0,0%</b>	<b>0,0%</b>	<b>0,0%</b>	<b>0,0%</b>	<b>0,0%</b>	<b>0,0%</b>	<b>0,0%</b>	<b>0,0%</b>	<b>0,0%</b>	<b>0,0%</b>	<b>0,0%</b>	<b>0,0%</b>	<b>0,0%</b>	<b>25,0%</b>	<b>0,0%</b>	<b>100%</b>
<b>THE NETHERLANDS</b>																									
Groningen								0															0	3	3
Noord-Holland								0															0	1	1
<b>TOTAL</b>	<b>0</b>	<b>0</b>	<b>0</b>	<b>0</b>	<b>0</b>	<b>0</b>	<b>0</b>	<b>0</b>	<b>0</b>	<b>0</b>	<b>0</b>	<b>0</b>	<b>0</b>	<b>0</b>	<b>0</b>	<b>0</b>	<b>0</b>	<b>0</b>	<b>0</b>	<b>0</b>	<b>0</b>	<b>0</b>	<b>4</b>	<b>0</b>	<b>4</b>
<b>PER CENT</b>	<b>0,0%</b>	<b>0,0%</b>	<b>0,0%</b>	<b>0,0%</b>	<b>0,0%</b>	<b>0,0%</b>	<b>0,0%</b>	<b>0,0%</b>	<b>0,0%</b>	<b>0,0%</b>	<b>0,0%</b>	<b>0,0%</b>	<b>0,0%</b>	<b>0,0%</b>	<b>0,0%</b>	<b>0,0%</b>	<b>0,0%</b>	<b>0,0%</b>	<b>0,0%</b>	<b>0,0%</b>	<b>0,0%</b>	<b>0,0%</b>	<b>100,0%</b>	<b>0,0%</b>	<b>100%</b>

## 4.2 Rabies cases per country and administrative units, 2nd quarter 2009

01.04.09-30.06.09

Location	Domestic animals										Wildlife											bat	Human cases	total		
	dog	cat	cattle	equine	goat sheep	pig	stray dog	other	subtotal	fox	raccoon dog	raccoon	wolf	badger	marten	other mustelides	other carnivores	wild boar	roe deer	red deer	fallow deer				other	subtotal
<b>ROMANIA</b>																										
Alba								0	3														3			3
Arad		2						2	4														4			6
Arges								0	6														6			6
Bacau	1	2	1					4	3														3			7
Bihor								0					1										1			1
Bistrita-Nasaud								0	1			1		1									2			2
Brasov								0	4														4			4
Buzau		1						1	3														3			4
Calarasi	1							1															0			1
Cluj			1					1	3														3			4
Covasna								0	1														1			1
Dolj			1					1	2														2			3
Galati	1							1	1														1			2
Harghita					1			1	1														1			2
Hunedoara		2						2	7														7			9
Ialomita								0	2														2			2
Maramures			1					1	3														3			4
Mehedinti								0	2														2			2
Mures		1						1	2														2			3
Olt	2	1		1				4	1														1			5
Prahova								0	1														1			1
Salaj								0	1														1			1
Satu Mare	2							2	1														1			3
Sibiu								0	1														1			1
Suceava	1		1					2	3														3			5
Teleorman								0	1														1			1
Tulcea	1		1					2	2														0			2
Valcea	1							1	2														2			3
<b>TOTAL</b>	<b>10</b>	<b>9</b>	<b>6</b>	<b>1</b>	<b>1</b>	<b>0</b>	<b>0</b>	<b>27</b>	<b>59</b>	<b>0</b>	<b>0</b>	<b>1</b>	<b>1</b>	<b>0</b>	<b>0</b>	<b>0</b>	<b>0</b>	<b>0</b>	<b>0</b>	<b>0</b>	<b>0</b>	<b>0</b>	<b>61</b>	<b>0</b>	<b>0</b>	<b>88</b>
<b>PER CENT</b>	<b>11.4%</b>	<b>10.2%</b>	<b>6.8%</b>	<b>1.1%</b>	<b>1.1%</b>	<b>0.0%</b>	<b>0.0%</b>	<b>30.7%</b>	<b>67.0%</b>	<b>0.0%</b>	<b>0.0%</b>	<b>1.1%</b>	<b>1.1%</b>	<b>0.0%</b>	<b>0.0%</b>	<b>0.0%</b>	<b>0.0%</b>	<b>0.0%</b>	<b>0.0%</b>	<b>0.0%</b>	<b>0.0%</b>	<b>0.0%</b>	<b>69.3%</b>	<b>0.0%</b>	<b>0.0%</b>	<b>100%</b>
<b>SERBIA</b>																										
Central Serbia	5	4				2		11	24						1		1						26			37
Vojvodina	1	1						2	6														6			8
<b>TOTAL</b>	<b>6</b>	<b>5</b>	<b>0</b>	<b>0</b>	<b>0</b>	<b>2</b>	<b>0</b>	<b>13</b>	<b>30</b>	<b>0</b>	<b>0</b>	<b>0</b>	<b>0</b>	<b>1</b>	<b>0</b>	<b>1</b>	<b>0</b>	<b>0</b>	<b>0</b>	<b>0</b>	<b>0</b>	<b>0</b>	<b>32</b>	<b>0</b>	<b>0</b>	<b>45</b>
<b>PER CENT</b>	<b>13.3%</b>	<b>11.1%</b>	<b>0.0%</b>	<b>0.0%</b>	<b>0.0%</b>	<b>4.4%</b>	<b>0.0%</b>	<b>28.9%</b>	<b>66.7%</b>	<b>0.0%</b>	<b>0.0%</b>	<b>0.0%</b>	<b>0.0%</b>	<b>2.2%</b>	<b>0.0%</b>	<b>2.2%</b>	<b>0.0%</b>	<b>0.0%</b>	<b>0.0%</b>	<b>0.0%</b>	<b>0.0%</b>	<b>0.0%</b>	<b>71.1%</b>	<b>0.0%</b>	<b>0.0%</b>	<b>100%</b>

## 4.2 Rabies cases per country and administrative units, 2nd quarter 2009

01.04.09-30.06.09

Location	Domestic animals										Wildlife										bat	Human cases	total			
	dog	cat	cattle	equine	goat sheep	pig	stray dog	other	subtotal	fox	raccoon dog	raccoon	wolf	badger	marten	other mustelides	other carnivores	wild boar	roe deer	red deer				fallow deer	other	subtotal
<b>RUSSIAN FEDERATION</b>																										
Adygeja resp.							1		1													0		1		
Astrahanskaja obl.	11	4	5		1				21	1			1									2		25		
Belgorodskaja obl.	3	5			1				9	3												3		12		
Brianskaja obl.	1	1							2	11	1											12		14		
Cecenskaja resp.			2						2													0		2		
Cuvasskaja resp.	1		3						4	6												6		10		
Dagestan resp.	3		1						4													0		4		
Ivanovskaja obl.	2								2	5				1								6		8		
Jaroslavl'skaja obl.	1	1							2	23												23		25		
Kabardino-Balkanskaja resp.	1								1	1												1		2		
Kaliningradskaja obl.	1		3		1				5	10				1								11		16		
Kaluzskaja obl.	2	1							3	10	2							1				13		16		
Karacaevo-Cerkesskaja resp.		1							1													0		1		
Krasnodarskij kr.	4								4													0		4		
Kurskaja obl.	1	2							3													0		3		
Lipeckaja obl.	2								2	2												2		4		
Mordovija resp.			1		1				2	15												15		17		
Moskovskaja obl.	11	1		1	2	1			16	44	9										1	54		70		
Nizgorodskaja obl.	4	1			2				7	27												27	2	36		
Novgorodskaja obl.									0	2	1											3		3		
Orlovskaja obl.		3	5						8	1					1							2		10		
Penzenskaja obl.	6	4	2						12	8												8		20		
Pskovskaja obl.	7	3	1						11	8	8											16		27		
Rjazanskaja obl.	2	1			1			1	5	2												2		7		
Rostovskaja obl.	1	3							4				1									1	1	6		
Saratovskaja obl.	5	4	7	1	2				19	11												11		30		
Severnaja Osetija-Alanija resp.	13		3						16													0		16		
Smolenskaja obl.	9	2			1				12	16	6											22		34		
Stavropol'skij kr.	1		6						7													0		7		
Tambovskaja obl.	2								2	1												1		3		
Tul'skaja obl.									0	4												4		4		
Tverskaja obl.	7	3			1				11	41	12											53		64		
Ul'janovskaja obl.	5	5	2						12	5												5		17		
Vladimirskaja obl.	4	1							5	12												12		17		
Vologradskaja obl.	2	1	5						8	2												2		10		
Vologdskaja obl.									0	1												1		1		
Voronez'skaja obl.	4	3					1		8	3												3		11		
<b>TOTAL</b>	<b>114</b>	<b>52</b>	<b>46</b>	<b>2</b>	<b>13</b>	<b>1</b>	<b>2</b>	<b>1</b>	<b>231</b>	<b>275</b>	<b>39</b>	<b>0</b>	<b>2</b>	<b>0</b>	<b>2</b>	<b>1</b>	<b>0</b>	<b>1</b>	<b>0</b>	<b>0</b>	<b>0</b>	<b>1</b>	<b>321</b>	<b>1</b>	<b>4</b>	<b>557</b>
<b>PER CENT</b>	<b>20.5%</b>	<b>9.3%</b>	<b>8.3%</b>	<b>0.4%</b>	<b>2.3%</b>	<b>0.2%</b>	<b>0.4%</b>	<b>0.2%</b>	<b>41.5%</b>	<b>49.4%</b>	<b>7.0%</b>	<b>0.0%</b>	<b>0.4%</b>	<b>0.0%</b>	<b>0.4%</b>	<b>0.2%</b>	<b>0.0%</b>	<b>0.2%</b>	<b>0.0%</b>	<b>0.0%</b>	<b>0.0%</b>	<b>0.2%</b>	<b>57.6%</b>	<b>0.2%</b>	<b>0.7%</b>	<b>100%</b>

## 4.2 Rabies cases per country and administrative units, 2nd quarter 2009

01.04.09-30.06.09

Location	Domestic animals										Wildlife											bat	Human cases	total		
	dog	cat	cattle	equine	goat sheep	pig	stray dog	other	subtotal	fox	raccoon dog	raccoon	wolf	badger	marten	other mustelides	other carnivores	wild boar	roe deer	red deer	fallow deer				other	subtotal
<b>SLOVENIA</b>																										
Dolenjska									0	2													2			2
Notranjsko-kraska									0	2													2			2
Obalno-kraska									0	1													1			1
Podravska									0	2													2			2
<b>TOTAL</b>	<b>0</b>	<b>0</b>	<b>0</b>	<b>0</b>	<b>0</b>	<b>0</b>	<b>0</b>	<b>0</b>	<b>0</b>	<b>7</b>	<b>0</b>	<b>0</b>	<b>0</b>	<b>0</b>	<b>0</b>	<b>0</b>	<b>0</b>	<b>0</b>	<b>0</b>	<b>0</b>	<b>0</b>	<b>0</b>	<b>7</b>	<b>0</b>	<b>0</b>	<b>7</b>
<b>PER CENT</b>	<b>0.0%</b>	<b>0.0%</b>	<b>0.0%</b>	<b>0.0%</b>	<b>0.0%</b>	<b>0.0%</b>	<b>0.0%</b>	<b>0.0%</b>	<b>0.0%</b>	<b>100.0%</b>	<b>0.0%</b>	<b>0.0%</b>	<b>0.0%</b>	<b>0.0%</b>	<b>0.0%</b>	<b>0.0%</b>	<b>0.0%</b>	<b>0.0%</b>	<b>0.0%</b>	<b>0.0%</b>	<b>0.0%</b>	<b>0.0%</b>	<b>100.0%</b>	<b>0.0%</b>	<b>0.0%</b>	<b>100%</b>
<b>UKRAINE</b>																										
Avtonomnaya Respublika Krym	1	1	1						3														0			3
Bolynskaja o.	2	1							3	1													1			4
Cherkasskaja o.	2	4							6	2					1								3			9
Chernigovskaja o.		4	1						5	1													1			6
Chernovitskaja o.	1	1							2														0			2
Dnepropetrovskaja o.		2							2														0			2
Donetskskaja o.	3	4							7	2													2			9
Ivano-Frankovskaja o.	1								1														0			1
Kharkovskaja o.	4	4	1						9	2					1								3			12
Khersonskaja o.	1	7	2						10						1								1			11
Khmel'nitskaja o.	5	1							6	5													5			11
Kirovogradskaja o.									0	1													1			1
Kiyevskaja o.	1	3							4														0			4
Luganskaja o.		11	1		1				13	1													1			14
L'vovskaja o.		1							1	2													2			3
Nikolajevskaja o.		2							2														0			2
Odesskaja o.	2		1						3	3													3			6
Poltavskaja o.	2								2														0			2
Rovensskaja o.									0	2					1								3			3
Sumskaja o.									5	3													3			8
Ternopol'skaja o.		1	3	1					0	1													1			1
Vinnitskaja o.	1	1	1						3	6					1								7			10
Zaporozhskaja o.	2								2	1												1	2			4
Zhitomirskaja o.	6	3	1	1					11	8													8			19
<b>TOTAL</b>	<b>35</b>	<b>53</b>	<b>10</b>	<b>1</b>	<b>1</b>	<b>0</b>	<b>0</b>	<b>0</b>	<b>100</b>	<b>41</b>	<b>0</b>	<b>0</b>	<b>0</b>	<b>0</b>	<b>5</b>	<b>0</b>	<b>0</b>	<b>0</b>	<b>0</b>	<b>0</b>	<b>0</b>	<b>1</b>	<b>47</b>	<b>0</b>	<b>0</b>	<b>147</b>
<b>PER CENT</b>	<b>23.8%</b>	<b>36.1%</b>	<b>6.8%</b>	<b>0.7%</b>	<b>0.7%</b>	<b>0.0%</b>	<b>0.0%</b>	<b>0.0%</b>	<b>68.0%</b>	<b>27.9%</b>	<b>0.0%</b>	<b>0.0%</b>	<b>0.0%</b>	<b>0.0%</b>	<b>3.4%</b>	<b>0.0%</b>	<b>0.0%</b>	<b>0.0%</b>	<b>0.0%</b>	<b>0.0%</b>	<b>0.0%</b>	<b>0.7%</b>	<b>32.0%</b>	<b>0.0%</b>	<b>0.0%</b>	<b>100%</b>

## 4.3 Trend tables

### 4.3.1 Comparison of the reporting quarter (II/2009) with the previous quarter (I/2009)

NAME	Total			Wildlife			Domestic animals			Bats			Human		
	II 2009 (no.)	I 2009 (no.)	Difference	II 2009 (no.)	I 2009 (no.)	Difference	II 2009 (no.)	I 2009 (no.)	Difference	II 2009 (no.)	I 2009 (no.)	Difference	II 2009 (no.)	I 2009 (no.)	Difference
Albania															
Austria															
Belarus	200	262	-62	128	199	-71	72	63	9						
Belgium															
Bosnia - Hercegovina	5	13	-8	4	7	-3	1	6	-5						
Bulgaria	17	25	-8	12	22	-10	5	3	2						
Croatia	122	323	-201	112	297	-185	10	26	-16						
Cyprus															
Czech Republic															
Denmark															
Estonia	2		2	2		2									
Finland															
France	5		5				1		1	4		4			
Germany		1	-1								1	-1			
Greece															
Hungary		1	-1		1	-1									
Iceland															
Ireland															
Italy	5	5		4	5	-1	1		1						
Latvia	21	15	6	16	15	1	5		5						
Lithuania	14	15	-1	11	12	-1	3	3							
Luxembourg															
Macedonia															
Malta															
Moldova	3	21	-18		10	-10	3	11	-8						
Montenegro	18	14	4	16	13	3	2	1	1						
Norway															
Poland	4	3	1	3	3					1		1			
Portugal															
Romania	88	209	-121	61	181	-120	27	28	-1						
Russian Federation	557	595	-38	321	316	5	231	279	-48	1		1	4		4
Serbia	45	64	-19	32	53	-21	13	11	2						
Slovak Republic															
Slovenia	7	13	-6	7	12	-5		1	-1						
Spain	4		4				3		3	1		1			
Sweden															
Switzerland + Lichtenstein															
The Netherlands	4		4							4		4			
Turkey	*	64		*	2		*	62		*			*		
Ukraine	147	221	-74	47	92	-45	100	129	-29						
United Kingdom		1	-1											1	-1
<b>TOTAL</b>	<b>1268</b>	<b>1865</b>	<b>-533</b>	<b>776</b>	<b>1240</b>	<b>-462</b>	<b>477</b>	<b>623</b>	<b>-84</b>	<b>11</b>	<b>1</b>	<b>10</b>	<b>4</b>	<b>1</b>	<b>3</b>

Wildlife: excluding bats

II/2009 (no.), I/2009 (no.): number of cases

Difference: no. of cases in II/2009 minus cases in I/2009

\* no data



#### 4.3.2 Comparison of the reporting quarter (II/2009) with the same quarter of the previous year (II/2008)

NAME	Total			Wildlife			Domestic animals			Bats			Human		
	II 2009 (no.)	II 2008 (no.)	Difference	II 2009 (no.)	II 2008 (no.)	Difference	II 2009 (no.)	II 2008 (no.)	Difference	II 2009 (no.)	II 2008 (no.)	Difference	II 2009 (no.)	II 2008 (no.)	Difference
Albania															
Austria															
Belarus	200	194	6	128	148	-20	72	46	26						
Belgium															
Bosnia - Hercegovina	5	22	-17	4	21	-17	1	1							
Bulgaria	17	10	7	12	7	5	5	3	2						
Croatia	122	221	-99	112	212	-100	10	9	1						
Cyprus															
Czech Republic															
Denmark															
Estonia	2		2	2		2									
Finland															
France	5	1	4				1	1		4		4			
Germany															
Greece															
Hungary		2	-2		2	-2									
Iceland															
Ireland															
Italy	5		5	4		4	1		1						
Latvia	21	24	-3	16	16		5	8	-3						
Lithuania	14	9	5	11	4	7	3	5	-2						
Luxembourg															
Macedonia															
Malta															
Moldova	3	5	-2		2	-2	3	3							
Montenegro	18	15	3	16	12	4	2	3	-1						
Norway															
Poland	4	6	-2	3	6	-3				1		1			
Portugal															
Romania	88	196	-108	61	161	-100	27	35	-8						
Russian Federation	557	688	-131	321	298	23	231	388	-157	1		1	4	2	2
Serbia	45	24	21	32	19	13	13	5	8						
Slovak Republic															
Slovenia	7	9	-2	7	9	-2									
Spain	4		4				3		3	1		1			
Sweden															
Switzerland + Lichtenstein															
The Netherlands	4		4							4		4			
Turkey	*	60		*	8		*	52		*			*		
Ukraine	147	413	-266	47	121	-74	100	291	-191		1	-1			
United Kingdom		2	-2					1	-1		1	-1			
<b>TOTAL</b>	<b>1268</b>	<b>1901</b>	<b>-573</b>	<b>776</b>	<b>1046</b>	<b>-262</b>	<b>477</b>	<b>851</b>	<b>-322</b>	<b>11</b>	<b>2</b>	<b>9</b>	<b>4</b>	<b>2</b>	<b>2</b>

Wildlife: excluding bats

II/2009 (no.), II/2008 (no.): number of cases

Difference: no. of cases in II/2009 minus cases in II/2008

\* no data

## 5. LIST OF CONTRIBUTORS

---

### **ALB Albania**

Ass. Prof. Dr. Dragush Mati  
Ministry of Agriculture and Food  
Directorate of Veterinary Service  
Tirana /Albania  
Tel: +355 4 222 539  
Fax: +355 4 222 539  
E-mail: vetdirector@albaniaonline.com

### **AUT Austria**

Mag. Ulrich Herzog, CVO  
Bundesministerium für Gesundheit und  
Frauen  
Bereich IV/B (Verbraucher-Gesundheit)  
Radetzkystraße 2  
A-1030 Wien  
Tel. +43-1-7 11 00-4824  
Fax +43-1-7 10 41 51  
E-mail: ulrich.herzog@bmgf.gv.at

### **BLR Belarus**

Dr. A.M. Axenov  
Head of the Central Board of Veterinary  
Medicine  
Ministry of Agriculture and Food  
Kirova 15  
Minsk /Belarus  
Tel: +375-17-227 6623  
Fax: +375-17-227 42 96  
+375-17-227 57 54  
E-mail: vetinsp@mshp.minsk.by

### **BEL Belgium**

Dr. L. Lengelé, CVO  
SPF Santé publique, Sécurité de la  
Chaîne alimentaire et Environnement  
Place Victor Horta, 40 – b. 10 – 1060  
Brussels, Belgium  
Tel: +32-2-524 73 00  
Fax: +32-2-524 73 49

Dr. Renaud Poizat  
AFSCA – Agence fédérale pour la  
Sécurité de la Chaîne alimentaire  
Direction Générale de la Politique de  
Contrôle  
WTC III, boulevard Simon Bolivar, 30,  
bureau 19/50  
B-1000 Bruxelles/Belgique  
Tel. +32-2-208 38 52  
Fax +32-2-208 36 12

Responsible expert:  
Dr. Ingrid Le Roux  
Dr. Steven Van Gucht

Rabies Laboratory, Contagious and  
Transmittable Diseases  
Rue Engelandstraat 642; 1180 Brussels  
Tel: +32(0)2 373 3256  
Fax: +32(0)2 373 3286

### **BIH Bosnia and Herzegovina**

Dr. Ramiz Velic  
Department of Infectious Diseases  
Veterinary Faculty Sarajevo  
Zmaja od Bosne 90  
Sarajevo 71000 /Bosnia and  
Herzegovina  
Tel: +387-61-160 361  
E-mail: vetzar@bih.net.ba

Dr. Sc. Drago N. Nedic  
Ministry Agriculture, Forestry and  
Water Management of Republika Srpska  
Milosa Obilica 51  
76300 Bijeljina, Republika Srpska  
Bosnia and Herzegovina  
Tel: +387-55-401 812,  
-211 506  
-403 508  
Fax: +387-55-403 508  
-472 353  
E-mail: nedicd@rstel.net  
nedicd@vetservice.org  
Web: www.vetservice.org

### **BUL Bulgaria**

Dr. Petya Petkova  
National Veterinary Service  
Animal Health Directorate  
15A "Pencho Slaveikov" blvd.  
1606 Sofia, Bulgaria  
Tel: +359 2 915 98 42  
Fax: +359 2 952 38 35

### **HVR Croatia**

Dr. Ljerka Zeba  
Veterinary Administration  
Ministry of Agriculture and Forestry  
Vukovarska 78  
10000 Zagreb, Republic of Croatia  
Tel: +385 1 6106207  
Fax: +385 1 6109207  
E-mail: ljerka.zeba@mps.hr

### **CYP Cyprus**

Dr. P. Economides, CVO  
Director of Veterinary Services  
Ministry of Agriculture, Natural  
Resources  
and Environment - Veterinary Services -

1417 Nicosia /Cyprus  
Tel. +357-2-80 52 0  
Fax +357-2-33 28 03  
E-mail [vet.services@cytanet.com.cy](mailto:vet.services@cytanet.com.cy)

#### **CZH Czech Republic**

MVDr. Josef Vitásek  
State Veterinary Administration CR  
Slezská 7  
CZ – 120 00 Praha 2 / Czech Republic  
Tel.: +420 – 227 010 144  
Fax : +420 – 227 010 195  
E-mail: [j.vitasek@svscr.cz](mailto:j.vitasek@svscr.cz)

Responsible expert:  
Responsible expert for CZH  
MVDr. Ivan Nágl  
National Reference Laboratory for Rabies  
State Veterinary Institute Prague  
Sídlištní 136/24  
CZ -165 03 Praha 6 – Lysolaje  
Tel. +420 251 031 281  
Fax +420 220 920 655  
E-mail: [i.nagl@svupraha.cz](mailto:i.nagl@svupraha.cz)

#### **DNK Denmark**

Dr. Preben Willeberg, CVO  
Pia Vestergaard, Veterinary Officer  
Devision of animal health  
Danish Veterinary and Food  
Administration  
Tel: +45 33 95 65 96  
E-mail: [pv@fvst.dk](mailto:pv@fvst.dk)

#### **EST Estonia**

Dr. Matti Nautras, CVO  
Head of Animal Health Department  
Veterinary and Food Broad of Estonia  
Väike-Paala-Street 3  
11415 Tallinn /Estonia  
Tel. +372-605 1732  
Fax +372-638 0210  
E-mail [nautras@vet.agri.ee](mailto:nautras@vet.agri.ee)

Responsible expert:  
Dr. Külli Must  
Head of Department  
Veterinary and Food Laboratory  
Kreutzwaldi 30  
51006 Tartu /Estonia  
Tel: +372-742 1246  
Fax: +372-742 1730  
E-mail: [kylli@vetlab.ee](mailto:kylli@vetlab.ee)

#### **FIN Finland**

Dr. Matti Aho, CVO  
Dr. Tiia Tuupanen  
Ministry of Agriculture and Forestry  
Department of Food and Health, Animal  
Health

PO BOX 30  
FIN-00023 Government  
Finland  
Tel: +358-9-16001,  
+358-9-1605 2787  
Fax: +358-9-1605 4777,  
+358-9-1605 3338  
E-mail [cvo-finland@mmm.fi](mailto:cvo-finland@mmm.fi)  
[tiia.tuupanen@mmm.fi](mailto:tiia.tuupanen@mmm.fi)  
Web: [www.mmm.fi](http://www.mmm.fi)

#### **FRA France**

Dr. Florence Cliquet  
Agence Francaise de Securite Sanitaire  
des Aliments (afssa) - Site de Nancy  
Domaine de Pixérécourt  
Boite Postale 9  
F-54220 Malzéville /Republique  
Francaise  
Tel: +33-3-83.29.89.50  
Fax: +33-3-83.29.89.59  
E-mail: [f.cliquet@nancy.afssa.fr](mailto:f.cliquet@nancy.afssa.fr)  
Web: [www.afssa.fr](http://www.afssa.fr)

#### **DEU Germany**

Prof. Dr. Werner Zwingmann, CVO  
Fed. Ministry of Food, Agriculture and  
Consumer Protection  
PF 14 02 70, D-53103 Bonn, Germany  
Tel: +49 228 529 41 57  
Fax: +49 228 529 35 53  
E-mail: [poststelle@bmelv.bund.de](mailto:poststelle@bmelv.bund.de)

Responsible experts:  
Dr. Thomas Müller  
Conrad Freuling  
Friedrich-Loeffler-Institute  
Federal Research Institute for Animal  
Health  
WHO Collaborating Centre for Rabies  
Surveillance and Research,  
Wusterhausen, Seestr. 55  
D-16868 Wusterhausen/Germany  
Tel: +49-33979-80 0  
Fax: +49-33979-80 200 and 222  
E-mail: [who-rabies@fli.bund.de](mailto:who-rabies@fli.bund.de)  
Web: [www.fli.bund.de](http://www.fli.bund.de)

#### **GRC Greece**

Dr. B. Stylas  
Ministry of Agriculture

Responsible expert:  
Dr Olga Mangana  
Head of Institute of Infectious and  
Parasitice disease

25 Neapoleos street. Agia Paraskevi  
15310  
Greece  
Tel, Fax: +30 210 6011499  
viruslab.ath@gmail.com

#### **HUN Hungary**

Dr. Tibor Balint  
Dr. Zsolt Földi  
Ministry of Agriculture and Regional  
Development  
Animal Health and Food Control  
Department  
H-1860 Budapest 55. Pf. 1  
Tel. +36-1 3014329 and 332 7986  
Fax +36-1 301 4669  
E-mail foldiz@oai.hu

#### **ISL Iceland**

Dr. Halldor Runolfsson  
Chief Veterinary Officer  
Ministry of Agriculture, Veterinary  
Services  
Solvholsgata 7  
150 Reykjavik /Iceland  
Tel. +354-560 9750  
Fax +354-552 1160  
E-mail halldor.runolfsson@lan.stjr.is

#### **IRE Ireland**

Dr. J. Melville  
Superintending Veterinary Inspector  
Department of Agriculture, Food and  
Forestry  
Agriculture House  
Dublin 2/Ireland  
Tel: +353-1-607 2981  
Fax: +353-1-661 2440

Responsible expert:

Dr Patrick Lenihan  
Senior Superintending Research Officer  
Virology Division  
Central Veterinary Research Laboratory  
Abbotstown, Blanchardstown  
Dublin 15

#### **ITA Italy**

Dr. Franco Mutinelli  
Istituto Zooprofilattico  
Sperimentale delle Venezie  
Viale dell'Università, 10  
I-35020 Legnaro (PD) /Italy  
Tel: +39-049-80 84 259  
Fax: +39-049-80 84 258  
E-mail: fmutinelli@izsvenezie.it

#### **LVA Latvia**

Dr. Mareks Samohvalovs  
Dr. Emils Jegers

Food and Veterinary Service  
Peldu Street 30,  
Riga, LV-1050, Latvia  
Tel: +371 67095230  
Fax: +371 67322727  
E-mail: pvd@pvd.gov.lv

#### **LTU Lithuania**

Dr. K. Lukauskas  
Dr. V. Kiudulas,  
Animal Health Department  
State Food and Veterinary Service  
Siesikų 19, LT-07170 Vilnius  
E-mail: vvt@vet.lt  
vkiudulas@vet.lt

#### **LUX Luxembourg**

Dr. Arthur Besch, CVO  
Inspection Vétérinaire  
Grand-Duché de Luxembourg  
Administration des Services vétérinaires  
93, rue d'Anvers  
Boîte postale 1403  
L-1014 Luxembourg  
Tel: +352-478 2539  
Fax: +352-407 545  
E-mail: Arthur.Besch@asv.etat.lu

#### **MKD Macedonia**

Sloboden Cokrevski, DVM  
Ministry of Agriculture, Forestry and  
Water Economy  
Veterinary Directorate  
Republic of Macedonia  
Leninova 2  
1000 Skopje/Macedonia  
Tel: + 389 2 3210468  
Fax: + 389 2 3210315  
E-mail: scokrevski@veterina.gov.mk

Responsible expert:

Prof. Dr. Misho Hristovski  
Veterinary institute Skopje  
Department of Biology and Pathology of  
Fish, Bees and Wild Animals  
Lazar Pop Trajkov 5-7  
1000 Skopje/Macedonia  
Tel: +389 2 3115125  
Fax: +389 2 3114619  
E-mail: hristovskim@hotmail.com

#### **MNE Montenegro**

Dr. Mevlida Hrapovic  
Veterinarska Uprava Bulevar Svetog  
Petra Cetinjskog br 9, 81000 Podgorica,  
Republic of Montenegro  
Tel: +381 81 201 945  
Fax: +381 81 201 946  
Email: mevlida.hrapovic@mn.yu

**MDA Moldova**

Vsevolod Stamati,  
Animal Health Division  
Department of Veterinary Medicine  
Ministry of Agriculture and Food Industry  
Republic of Moldova  
E-mail: dmv@maia.gov.md

**NED Netherlands**

Dr. P.W.de Leeuw  
Dutch Ministry of Agriculture, Nature and  
Food  
Bezuidenhoutseweg 73 - P.O. Box 20401  
NL-2500 EK's-Gravenhage /Netherlands

Dr. L. Züchner  
Food and Consumer Product Safety Authority  
De Stoven 22  
NL-7206 AX Zutphen /Netherlands  
Tel: +31-575-58 8 100  
Fax: +31-575-588 8 200  
E-mail: lothar.zuchner@vwa.nl

**NOR Norway**

Dr. Keren Bar-Yaacov, CVO  
Norwegian Food Safety Authority, Head  
Office  
P.O. Box 383  
N-2381 Brumunddal, Norway  
Tel: +47 23 21 68 00  
Fax: +47 23 21 68 01  
E-mail: postmottak@mattilsynet.no

**POL Poland**

Krzysztof Jazdzewski, DVM  
Acting Chief Veterinary Officer  
General Veterinary Inspectorate  
Veterinary Inspection  
30, Wspolna Str,  
00-930 Warsaw / Poland  
Tel.: +4822623208889  
+4822626288511  
Fax: +48226231408  
E-mail: wet@wetgiw.gov.pl

## Responsible experts:

Prof. Jan. F. Zmudzinski  
National Veterinary Research Institute  
Department of Virology  
National Reference Laboratory for Rabies  
Al. Partyzantow 57  
24 -100 Pulawy / Poland  
Tel.: +48818863051  
Fax: +48818862595  
E-mail: jfzmudzi@piwet.pulawy.pl

Magdalena Zietara, DVM  
Animal Health and Welfare Office  
General Veterinary Inspectorate  
Veterinary Inspection

30, Wspolna Str,  
00-930 Warsaw / Poland  
Tel.: +48226232264  
Fax: +48226231408  
E-mail:  
magdalena.zietara@wetgiw.gov.pl

**PRT Portugal**

Dr.C.A.M.de Andrade  
Fontes  
Direccao-Geral da Pecuaria

**ROU Romania**

Prof. Gabriel Predoi, CVO  
General Director of the Sanitary  
Veterinary General Direction, National  
Sanitary Veterinary and Food Safety  
Authority  
Bd. Carol I, nr. 24, sector 3  
Bucuresti, cod 70.033 /Romania  
Tel: +40-21-3157875  
Fax: +40-21-3124967  
E-mail: predoi@ansv.ro

**RUS Russian Federation  
(European part)**

Prof. V.A.Vedernikov  
Dr. I.V.Baldina  
The Kovalenko All-Russian  
Inst.of Exper. Veterinary Medicine  
109455, Moscow, Ryazansky prosp., 24  
Tel: +495 377-9483  
Fax: +495 970-0369  
E-Mail: epizootviev@mail.ru

Dr. N.A.Yaremenko  
Dr. S.A.Kolomytzev  
Department of veterinary and livestock  
Ministry of Agriculture  
107139, Moscow, Orlikov per., 1/11  
Tel: +495 975-5423  
Fax: +495 975-5423  
E-mail: n.yaremenko@vet.mcx.ru

## Responsible expert:

Dr Artem Metlin  
Federal Centre for Animal Health,  
600901, Vladimir,Russia.  
Fax +74 922260753  
E-mail artem.metlin@inbox.ru

**SRB Serbia**

Mr. Budimir Plavsic, DVM  
Ministry of Agriculture  
Head of the Animal Health Department  
E-mail b.plavsic@minpolj.sr.gov.yu

Dr. Jelena Desnica (Director)  
Dr. Nenad Vranjes (Head of Rabies Unit,  
Epidemiology, Rabies prevention)  
Dr. Srdan Stankov (Rabies diagnostics)  
Pasteur Institute Novi Sad  
Hajduk Veljkova 1 / P.O. Box 208  
21000 Novi Sad / Serbia  
Tel.: +381 21 6611 003  
+381 21 420 528  
Fax: +381 21 6611 003  
Email: paster-ns@neobee.net

#### **SVK Slovak Republic**

Prof. Josef Bires, CVO  
Roman Matejčík, DVM  
State Veterinary Administration of the  
Slovak Republic  
Botanická No 17  
842 13 Bratislava /Slovak Republic  
Tel. +421-2-60 257 227  
Fax +421-2-65 411 159  
E-mail welfare@svssr.sk

#### Responsible expert:

Miroslav Mojžiš, DVM  
Štátny veterinárny ústav Zvolen  
Pod Dráhami No. 918  
960 86 Zvolen /Slovak Republic

#### **SVN Slovenia**

Aleš Brečelj, MSc, DVM  
Ministry of Agriculture, Forestry and  
Food  
Veterinary Administration of the Republic  
of Slovenia  
Parmova 53, 1000 Ljubljana / SLOVENIA  
Tel: +386-1-300 13 00  
Fax: +386-1-300 13 56  
E-mail: ales.brecelj@gov.si  
Web: www.sigov.si/vurs

#### Responsible expert:

Peter Hostnik, PhD, DVM  
National Veterinary Institute, Unit for the  
diagnostic of contagious and other  
diseases,  
Laboratory of Virology  
Gerbičeva 60  
1000 Ljubljana / SLOVENIA  
Tel: +386-1-477 91 00  
Fax: +386-1-477 93 52  
E-mail: peter.hostnik@vf.uni-lj.si

#### **ESP Spain**

Ilmo. Sr. D. Pedro Angel García González  
Subdirector General de Sanidad Exterior  
Tel: +34-91-596 20 38  
Fax: +34-91-596 20 47  
E-mail: pgarciag@msc.es  
Sr. D. Carlos Abellán García

Jefe de Servicio de Veterinaria Oficial  
Tel: +34-91-596 19 34  
Fax: +34-91-596 20 47  
E-mail: cabellan@msc.es

Ministerio de Sanidad y Consumo  
Dirección General de Salud Pública  
Subdirección General de Sanidad  
Exterior  
C/Paseo del Prado, 18-20  
E-28071 Madrid

#### Responsible expert - Diagnóstico:

Sr. D. Juan E. Echevarría Mayo  
Servicio de Microbiología Diagnóstica  
Centro Nacional de Microbiología  
Instituto de Salud Carlos III  
Ministerio de Sanidad y Consumo  
Ctra. Majadahonda-Pozuelo s/n  
28220 Majadahonda, Madrid  
Tel: +34-91-509 79 01  
Fax: +34-91-509 79 66  
E-mail: jeecheva@isciii.es

#### Epidemiología:

Sra. Da Luisa Pilar Sánchez Serrano  
Centro Nacional de Epidemiología  
Instituto de Salud Carlos III  
Ministerio de Sanidad y Consumo  
C/ Sinesio Delgado, 6  
E-28029 Madrid  
Tel: +34-91-387 78 02  
Fax: +34-91-387 78 16  
E-mail: Isanchez@isciii.es

Dr. Ignacio Sanchez Esteban  
Subdirector General de Sanidad  
Veterinaria  
MAPA  
Ministerio de Agricultura, Pesca y  
Alimentacion  
Madrid /Spain  
Tel: +34-91-347 82 95  
Fax: +34-91-347 82 99  
E-mail: isanchez@mapya.es  
Web: www.mapya.es

#### Responsible expert:

D. Fulgencio Garrido Abellan  
Tel: +34-958-44 03 75  
Fax: +34-958-44 12 00  
E-mail: fgarrido@moebius.es

#### Dña. Teresa Rodríguez-Trenchs

Tel: +34-91-347 83 4  
Fax: +34-91-347 82 99  
E-mail: trodrigu@mapya.es

**SWE Sweden**

Dr. Leif Denneberg  
National Board of Agriculture  
Department for Animal Production and Health  
SE-551 82 Jönköping /Sweden  
Tel: +46-36-15 50 00  
Fax: +46-36-30 81 82  
E-mail: leif.denneberg@sjv.se

## Responsible expert:

Professor Anders Engvall  
National Veterinary Institute  
SE-751 89 Uppsala  
Tel: +46-18-67 40 00  
Fax: +46-18-67 44 45  
E-mail: anders.engvall@sva.se

**CHE Switzerland**

PD Reto Zanoni  
Dr. Urs Breitenmoser  
University of Bern - Swiss Rabies Centre  
Institute of Veterinary Virology  
Länggass Str. 122  
CH-3012 Bern /Switzerland  
Tel: +41-31-631 23 78  
Fax: +41-31-631 25 34  
E-Mail: zanoni@ivv.unibe.ch  
breitenmoser@ivv.unibe.ch  
Web: www.cx.unibe.ch/ivv

**TUR Turkey**

Asso.Prof.Dr. Muzaffer AYDEMİR  
Ministry of Agriculture and Rural Affairs  
General Directorate of Protection and Control  
Esat cad. No. 3  
06100 Bakanlıklar, Ankara /Turkey  
Tel: +90-312-41 82 436  
Fax: +90-312-41 78 209

## Responsible expert:

Dr. Orhan Aylan, Chief of Rabies Laboratory  
Etlik Central Veterinary Control and Research Institute  
06020 Etlik, Ankara /Turkey  
Tel: +90-312-32 60 090 / 154  
Fax: +90-312-32 11 755

**UKR Ukraine**

Dr. P. Verbytskyi  
Ministry of Agrarian Policy  
State Department of Veterinary Medicine  
Khreshchatik 24  
01001 Kiev /Ukraine  
Tel: +380-44-229 12 70  
Fax: +380-44-229 85 45  
E-mail: uzpr@minapk.kiev.ua

Dr. Liudmyla Grishok  
Institute of Veterinary Medicine  
Head of Laboratory for Rabies  
Donetskaja Street 30  
Kiev-151 /Ukraine  
Tel: +380-44-243 72 38  
Fax: +380-44-242-69-81  
E-mail: ivm-kiev@akcecc.kiev.ua

Dr. Zoya Trotsenko  
Head of Virology Department  
State Research Institute of Laboratory Diagnostics and Veterinary Sanitary Expertise  
Donetskaya Street 30  
Kiev-151, Ukraine  
Tel: +380-44-243 37 55  
Fax: +380-44-242-37 55  
E-Mail: biotech@astral.kiev.ua

**UNK United Kingdom**

Mr Nigel Gibbens BVetMed MSc MRCVS, CVO  
Mr David Mouat BVM&S MSc MRCVS  
Mr Balazs Toth DrMedVet MRCVS  
Department for Environment, Food and Rural Affairs  
Area 5D Nobel House  
17 Smith Square, London SW1P 3JR  
Tel: +44-207-238 6047  
Fax: +44-207-238 5051  
e-mail david.c.mouat@defra.gsi.gov.uk  
balazs.toth@defra.gsi.gov.uk

## Responsible expert:

Prof. Anthony R. Fooks  
Rabies Research and Diagnostic Group,  
WHO Collaborating Centre, Department of Virology, Veterinary Laboratories Agency (Weybridge), New Haw,  
Addlestone, Surrey, KT15 3NB, UK  
Tel: +44 1932-357840  
Fax: +44 1932-357239  
E-Mail: t.fooks@vla.defra.gsi.gov.uk

Please inform the editor about changes of contact details!

**RABIES CASES EUROPE**  
**2nd QUARTER 2009**  
**1268 CASES REPORTED**

**11 BAT RABIES CASES INCLUDED**  
**4 HUMAN RABIES CASES INCLUDED**

■ rabies free (terrestrial rabies)  
□ no data

200 km

Black Sea

All rights reserved  
WHO Coll. Centre  
Wusterhausen / DEU  
Administrative boundaries  
based on GfK GeoMarketing  
RegioGraph 10.0

